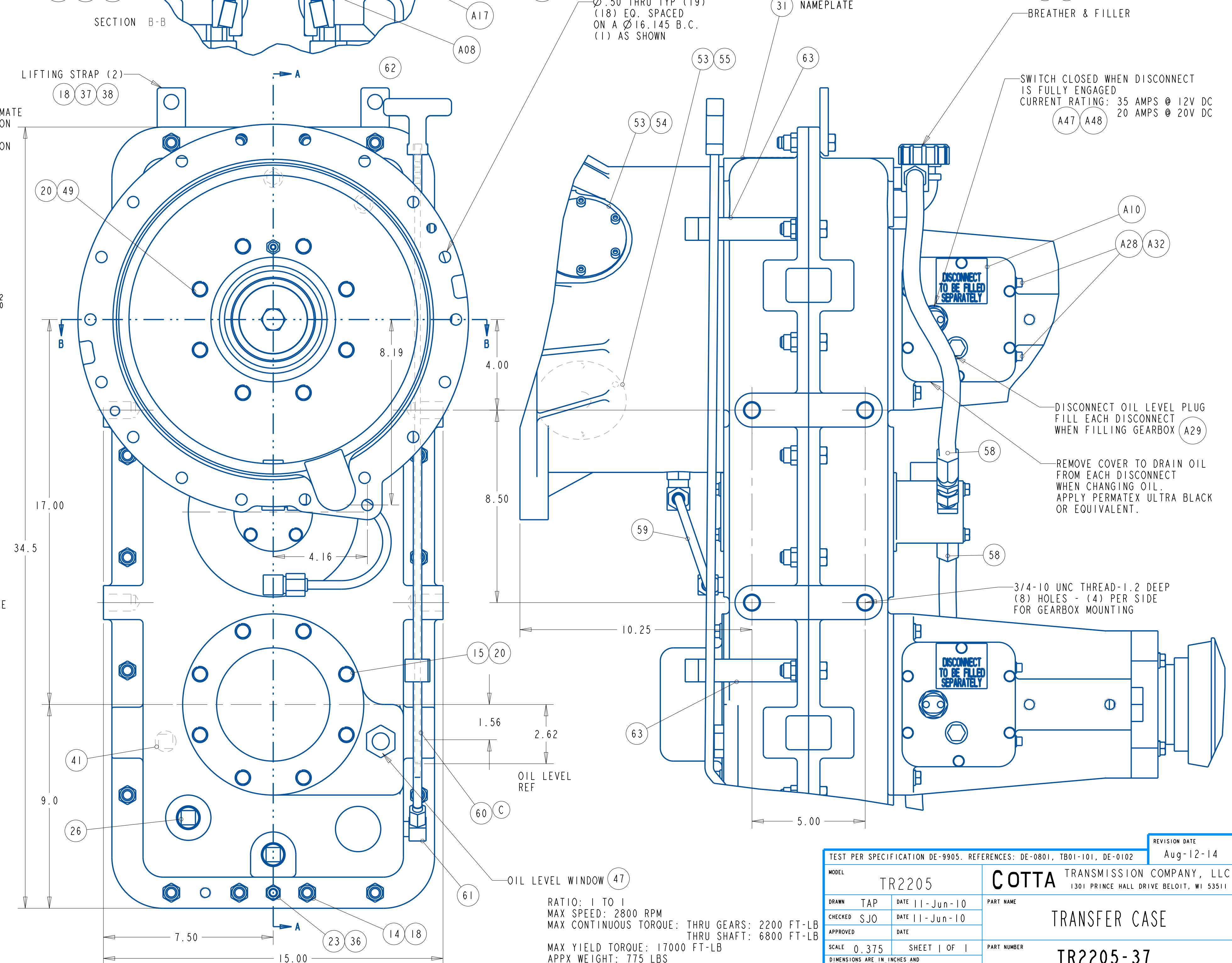
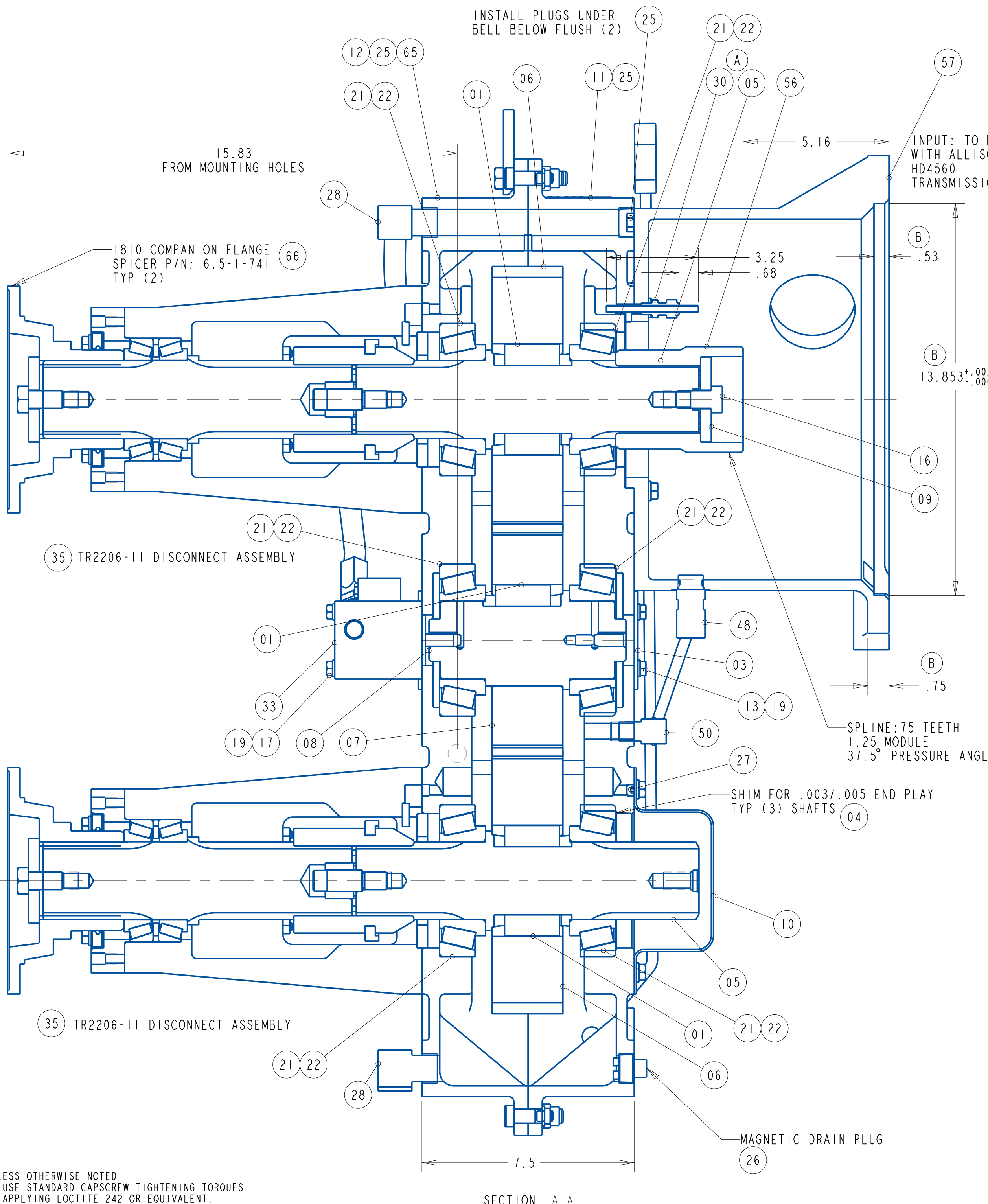
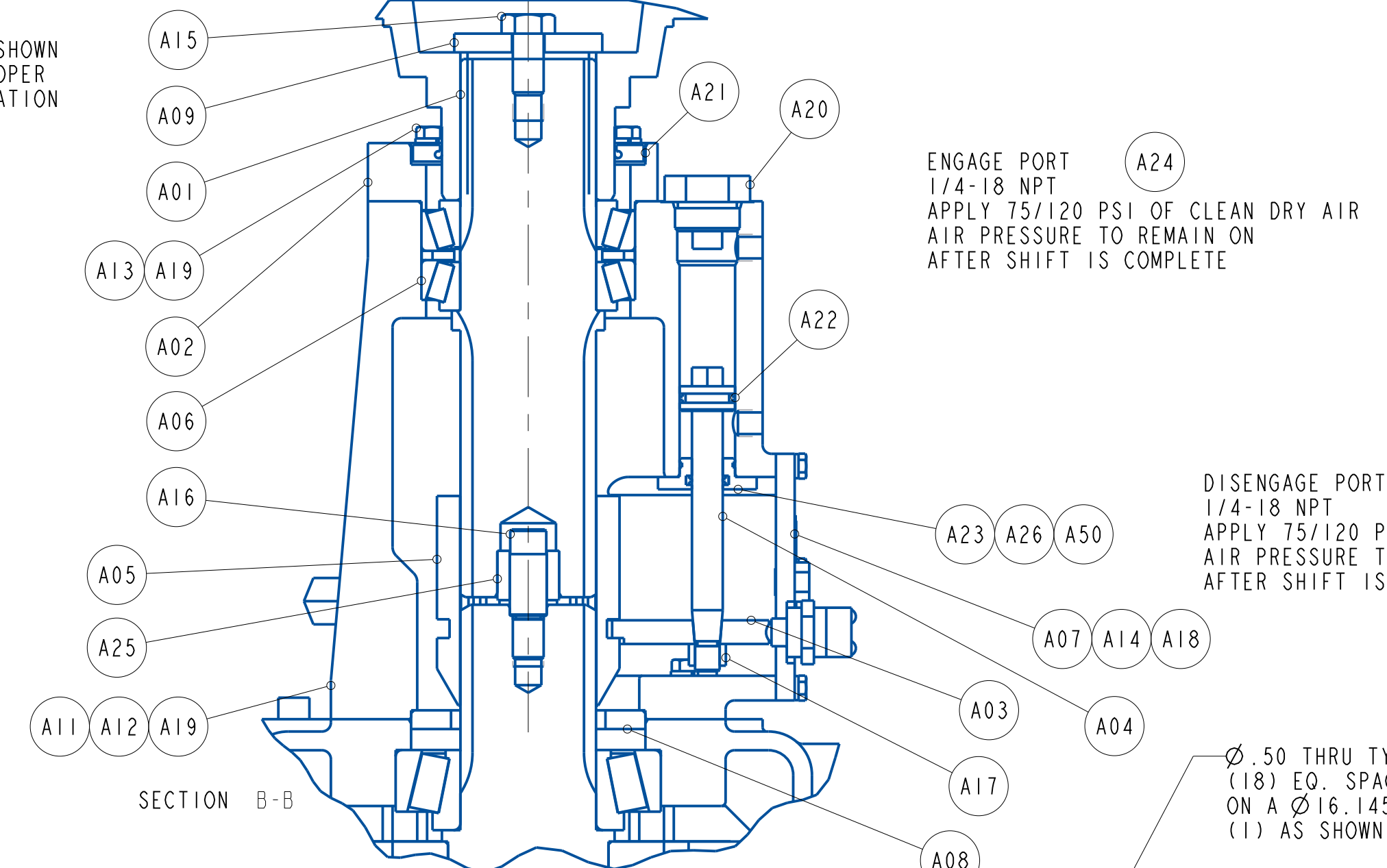
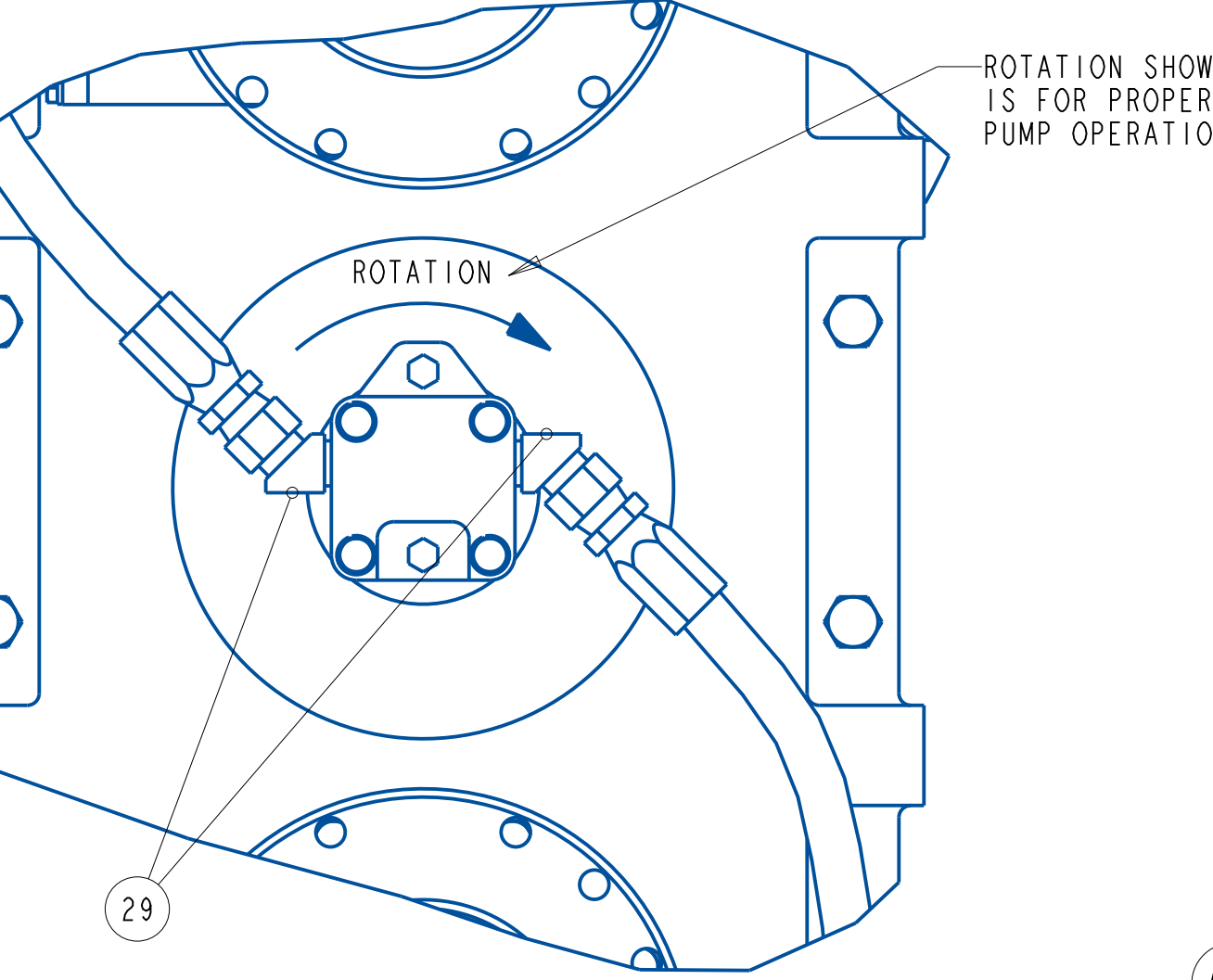


PROPRIETARY NOTICE: THIS DRAWING AND ALL INFORMATION THEREON IS THE PROPERTY OF COTTA TRANSMISSION COMPANY. THIS DRAWING IS NOT TO BE COPIED OR USED FOR THE PURPOSE OF MANUFACTURING EXCEPT BY WRITTEN CONSENT OF COTTA TRANSMISSION COMPANY. ORIGINAL VIBRATIONS EXIST IN ALL ROTATING SYSTEMS. IT IS THE SOLE RESPONSIBILITY OF THE EQUIPMENT MANUFACTURER OR ASSEMBLER TO INSURE THAT NO DAMAGING CRITICALS FALL IN THE OPERATING RANGE OF THE SYSTEM.

ENGINEERING CHANGE NOTICES				
LTR	DESCRIPTION	ECN	DATE	BY
A	ADD LUBE TUBE	12451	19-JAN-11	TAP
B	ADDED ADAPTER HOUSING DIMENSIONS	13391	Oct-15-13	LAS
C	CHG'D 0628364B TO 0629591B	13926	Aug-12-14	LAS

- NOTES
1. APPLY PERMATEX ULTRA BLACK OR EQUIVALENT BETWEEN ITEMS A09 & 09 WASHERS & YOKES OR FLANGES.
 2. UNLESS NOTED, APPLY LOCTITE 17430 OR EQUIVALENT AT ALL SPLITLINES.
 3. METAL STAMP MONTH & YEAR OF BUILD DATE ON EACH DISCONNECT FLANGE. EXAMPLE: 5-98
 4. CUSTOMER TO TORQUE ITEM 16 CAPSCREWS TO 150 FT-LB APPLYING LOCTITE 271 OR EQUIVALENT.
 5. TORQUE ITEM A16 BOLT TO 150 FT-LB APPLYING LOCTITE 271 OR EQUIVALENT.
 6. INSTALL ITEM A08 PILOT RING APPLYING LOCTITE 609 OR EQUIVALENT ON OD OF RING.
 7. TORQUE ITEM A17 NUT TO 60 FT-LB APPLYING LOCTITE 271 OR EQUIVALENT.
 8. INSTALL PIPE THREAD COMPONENTS APPLYING LOCTITE 545 OR EQUIVALENT.
 9. UNLESS NOTED, TORQUE ALL FASTENERS USING STANDARD TORQUE CHARTS APPLYING LOCTITE 242 OR EQUIVALENT.



RATIO: 1 TO 1
MAX SPEED: 2800 RPM
MAX CONTINUOUS TORQUE: THRU GEARS: 2200 FT-LB
THRU SHAFT: 6800 FT-LB
MAX YIELD TORQUE: 17000 FT-LB
APPX WEIGHT: 775 LBS

TEST PER SPECIFICATION DE-9905. REFERENCES: DE-0801, TB01-101, DE-0102				REVISION DATE	
				Aug-12-14	
MODEL	TR2205	COTTA TRANSMISSION COMPANY, LLC		1301 PRINCE HALL DRIVE BELOIT, WI 53511	
DRAWN	TAP	DATE	11-Jun-10	PART NAME	
CHECKED	SJO	DATE	11-Jun-10	TRANSFER CASE	
APPROVED		DATE		PART NUMBER	
SCALE	0.375	SHEET	1 OF 1	TR2205-37	
DIMENSIONS ARE IN INCHES AND REFERENCE UNLESS TOLERANCED					

UNLESS OTHERWISE NOTED
1. USE STANDARD CAPSCREW TIGHTENING TORQUES
APPLYING LOCTITE 242 OR EQUIVALENT.