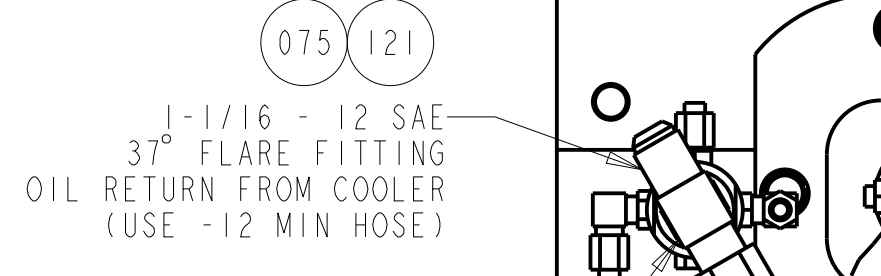
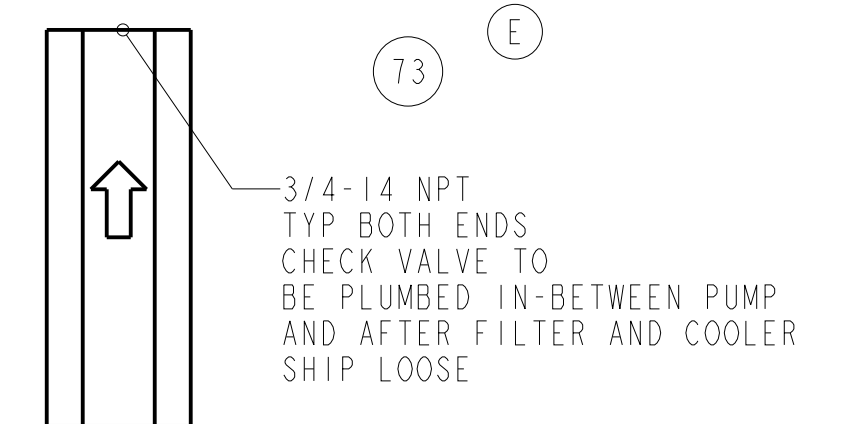


PROPRIETARY NOTICE: THIS DRAWING AND ALL INFORMATION THEREON IS THE PROPERTY OF COTTA TRANSMISSION COMPANY. THIS DRAWING IS NOT TO BE COPIED OR USED FOR THE PURPOSE OF MANUFACTURING EXCEPT BY WRITTEN CONSENT OF COTTA TRANSMISSION COMPANY. ORIGINAL VIBRATIONS EXIST IN ALL ROTATING SYSTEMS. IT IS THE SOLE RESPONSIBILITY OF THE COMPONENT MANUFACTURER OR ASSEMBLER TO INSURE THAT NO DAMAGING CRITICALS FALL IN THE OPERATING RANGE OF THE SYSTEM.

ENGINEERING CHANGE NOTICES				
LTR	DESCRIPTION	ECN	DATE	BY
A	WAS ITEM #093	9378	03-May-01	SBL
B	B1 - DELETED ITEMS 3, 4, 61, 91, 108 B2 - ADDED NOTE B3 - ADDED VIEW	9387	10-May-01	SBL
C	ADDED ITEM 85	9608	19-Nov-01	SBL
D	SEE ECN	9668	09-Jan-02	RJL
E	WAS .003/.005 EP, DEL TEE + NIPPLE	10471	27-Oct-03	TAP
F	ADDED #X35 PAGE 2	10595	07-Jul-04	LJB

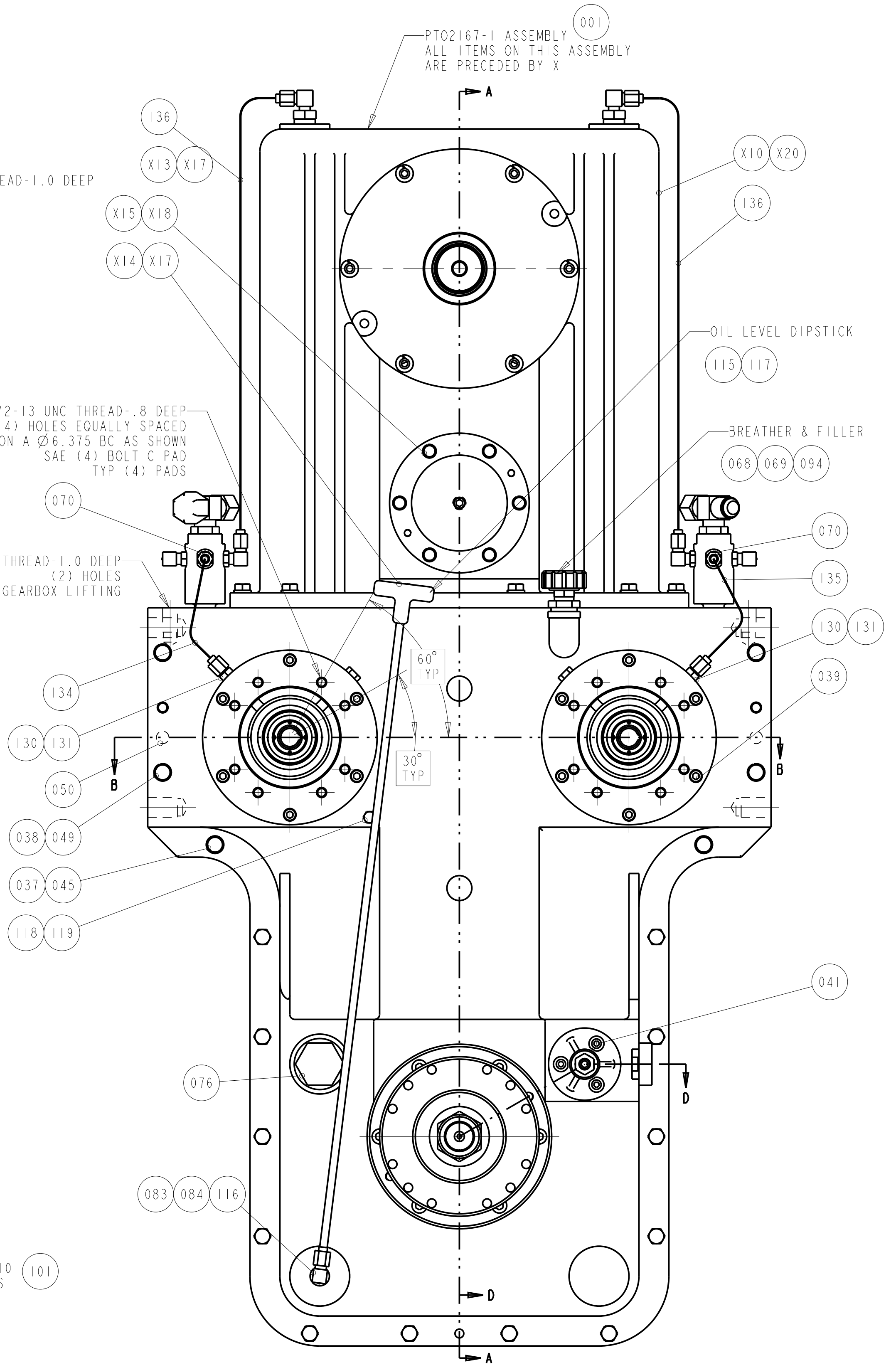
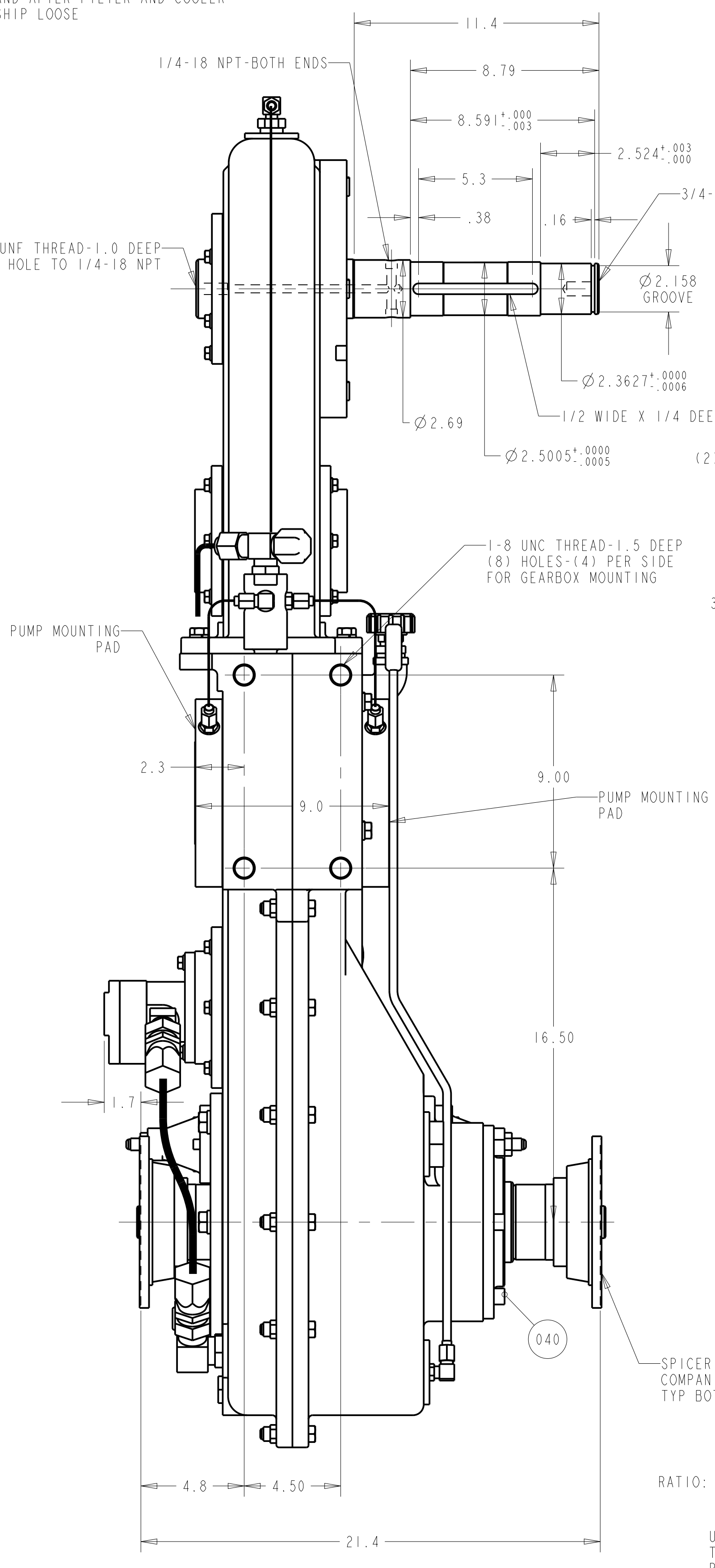
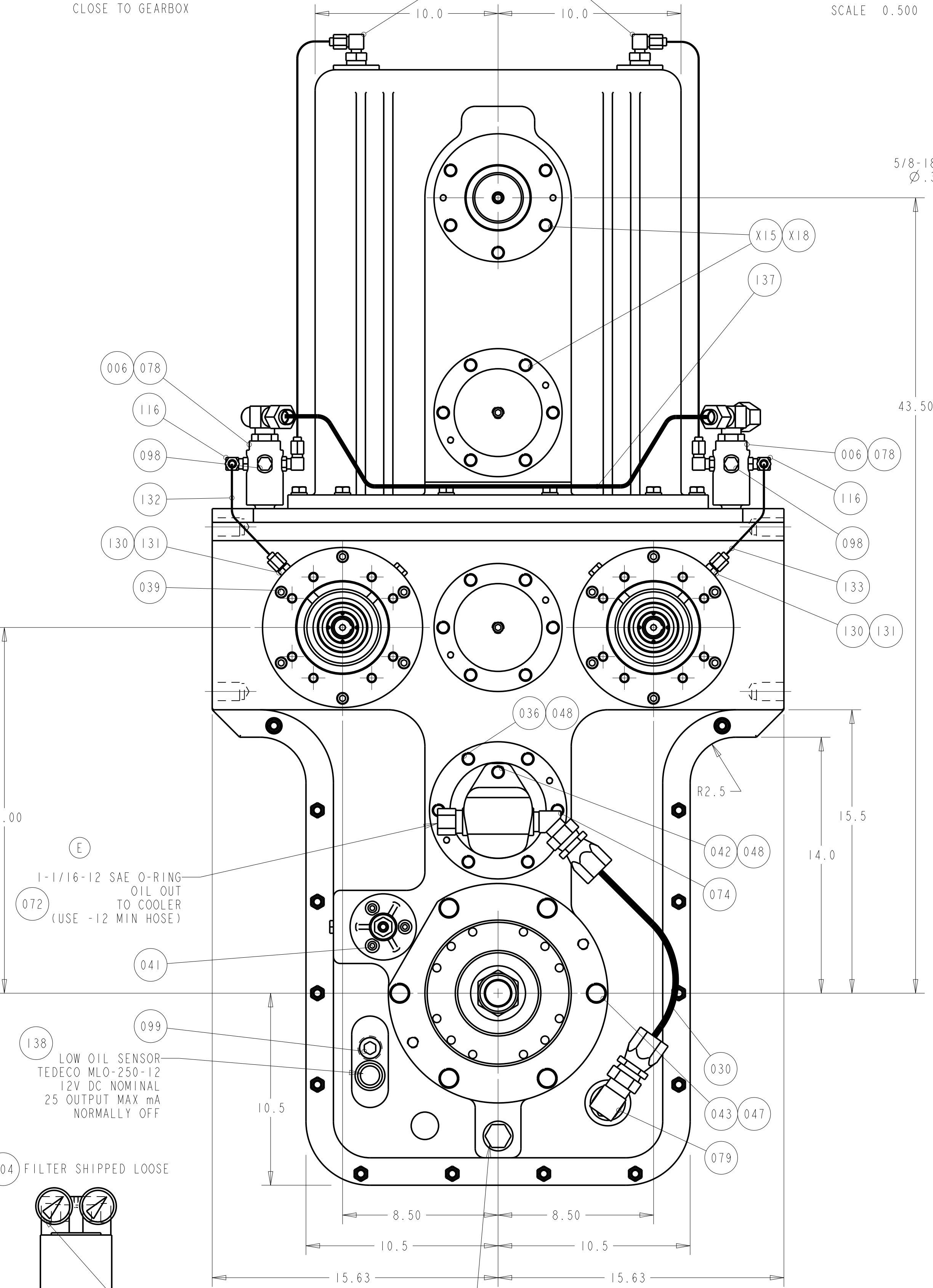


ANGLE TEES APPROX 30° TO ALLOW BENDING OF TUBES CLOSE TO GEARBOX



SCALE 0.500

NOTE: ADD LOCTITE THREADLOCKER 242 OR EQUIVALENT TO ALL CAPSCREWS LOCATED IN THRU HOLES OF CASE & COVER.



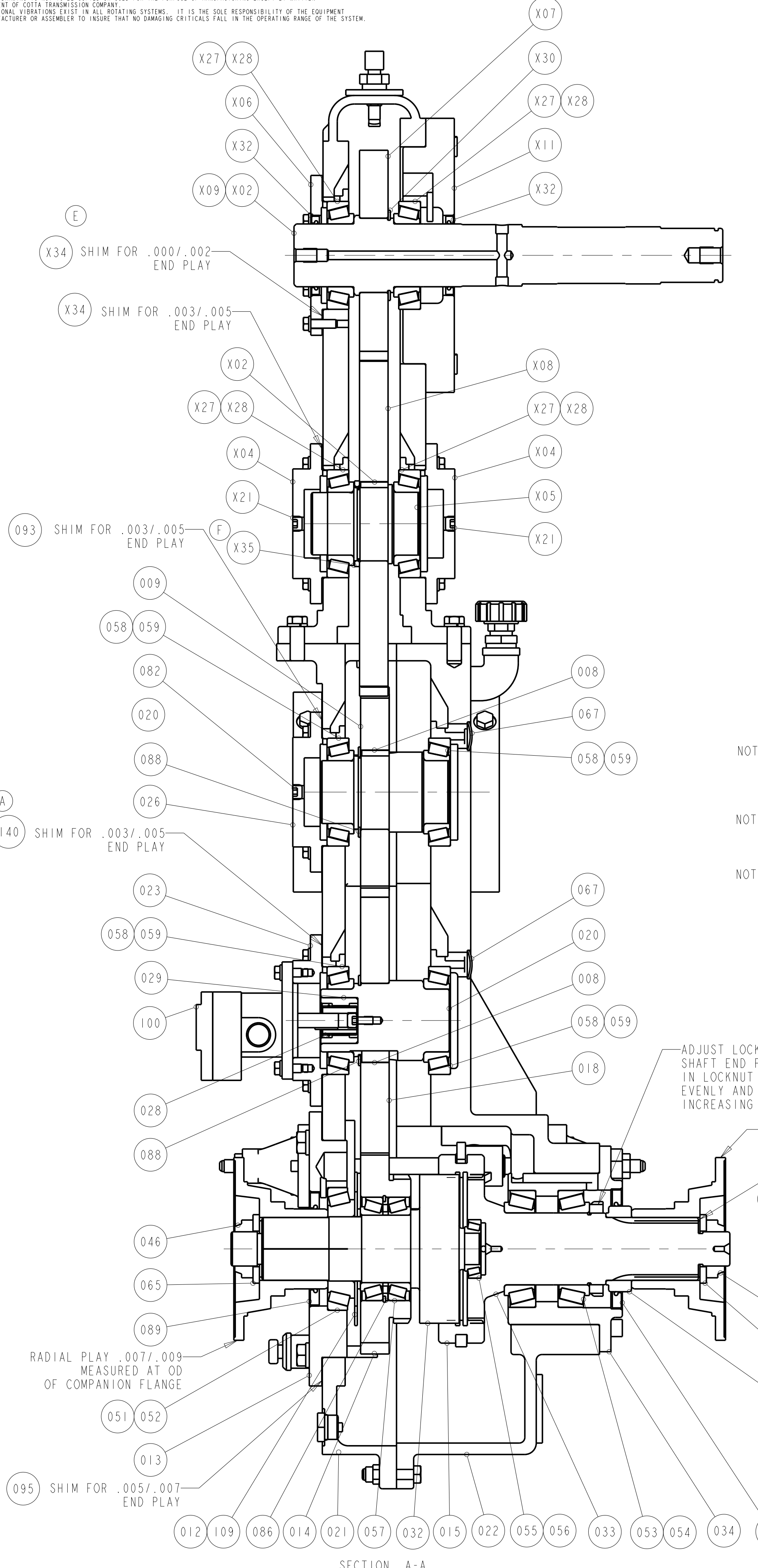
RATIO: 1 TO 1.07 OVERSPEED - PTO PADS

UNIT RATING:
TRUCK/THRU DRIVE: 12500 FT-LB
PTO DRIVE: 1200 FT-LB
COMPRESSOR SHAFT: 1200 FT-LB
SAE C PUMP PAD: 500 FT-LB PER PAD
INPUT SPEED: 3000 RPM MAX

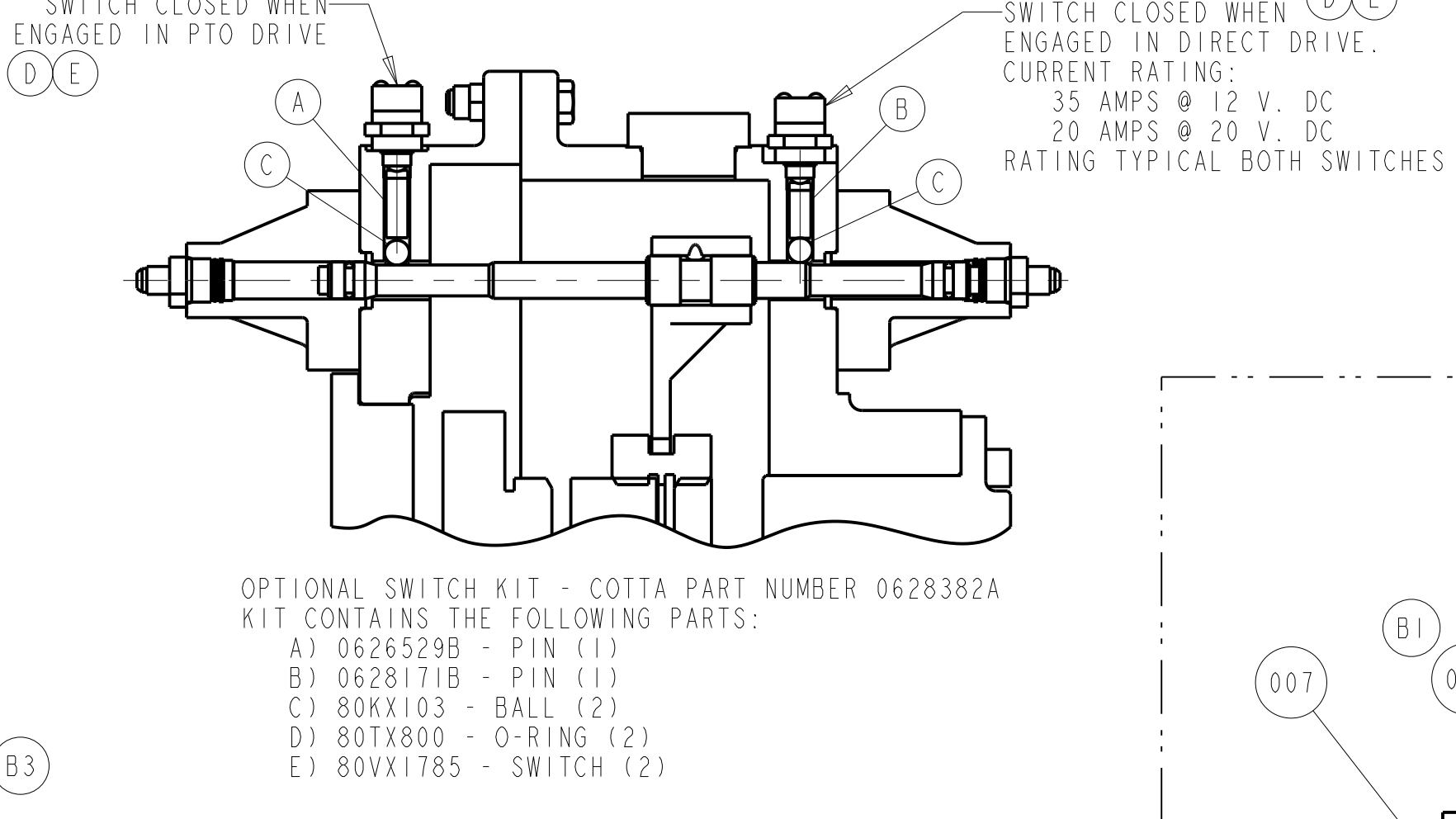
NOTE: THIS UNIT REPLACES TR2165-7		REVISION DATE	
TEST PER SPECIFICATION DE-9905. REFERENCES: DE-0801, TB01-101, DE-0102		07-Jul-04	
MODEL	TR2165	COTTA TRANSMISSION COMPANY, LLC 1301 PRINCE HALL DRIVE, BELLOIT, WI 53511	
DRAWN	RJL	DATE	09-OCT-00
CHECKED	SBL	DATE	10-OCT-00
APPROVED	TAP	DATE	11-OCT-00
SCALE	0.25	SHEET	1 OF 2
DIMENSIONS ARE IN INCHES		PART NUMBER	
		TR2165-15	

PROPRIETARY NOTICE: THIS DRAWING AND ALL INFORMATION THEREON IS THE PROPERTY OF COTTA TRANSMISSION COMPANY. THIS DRAWING IS NOT TO BE COPIED OR USED FOR THE PURPOSE OF MANUFACTURING EXCEPT BY WRITTEN CONSENT OF COTTA TRANSMISSION COMPANY. ORIGINAL VIBRATIONS EXIST IN ALL ROTATING SYSTEMS. IT IS THE USER'S RESPONSIBILITY TO ENSURE THAT NO DAMAGING CRITICALS FALL IN THE OPERATING RANGE OF THE SYSTEM.

ENGINEERING CHANGE NOTICES				
LTR	DESCRIPTION	ECN	DATE	BY
A	WAS ITEM #093	9378	03-May-01	SBL
B	B1 - DELETED ITEMS 3, 4, 61, 91, 108 B2 - ADDED NOTE B3 - ADDED VIEW	9387	10-May-01	SBL
C	ADDED ITEM #5	9608	19-Nov-01	SBL
D	SEE ECN	9668	09-Jan-02	RJL
E	WAS .003/.005 EP, DEL TEE + ELBOW	10471	27-Oct-03	TAP
F	ADDED #X35 SPACER	10595	07-Jul-04	LJB



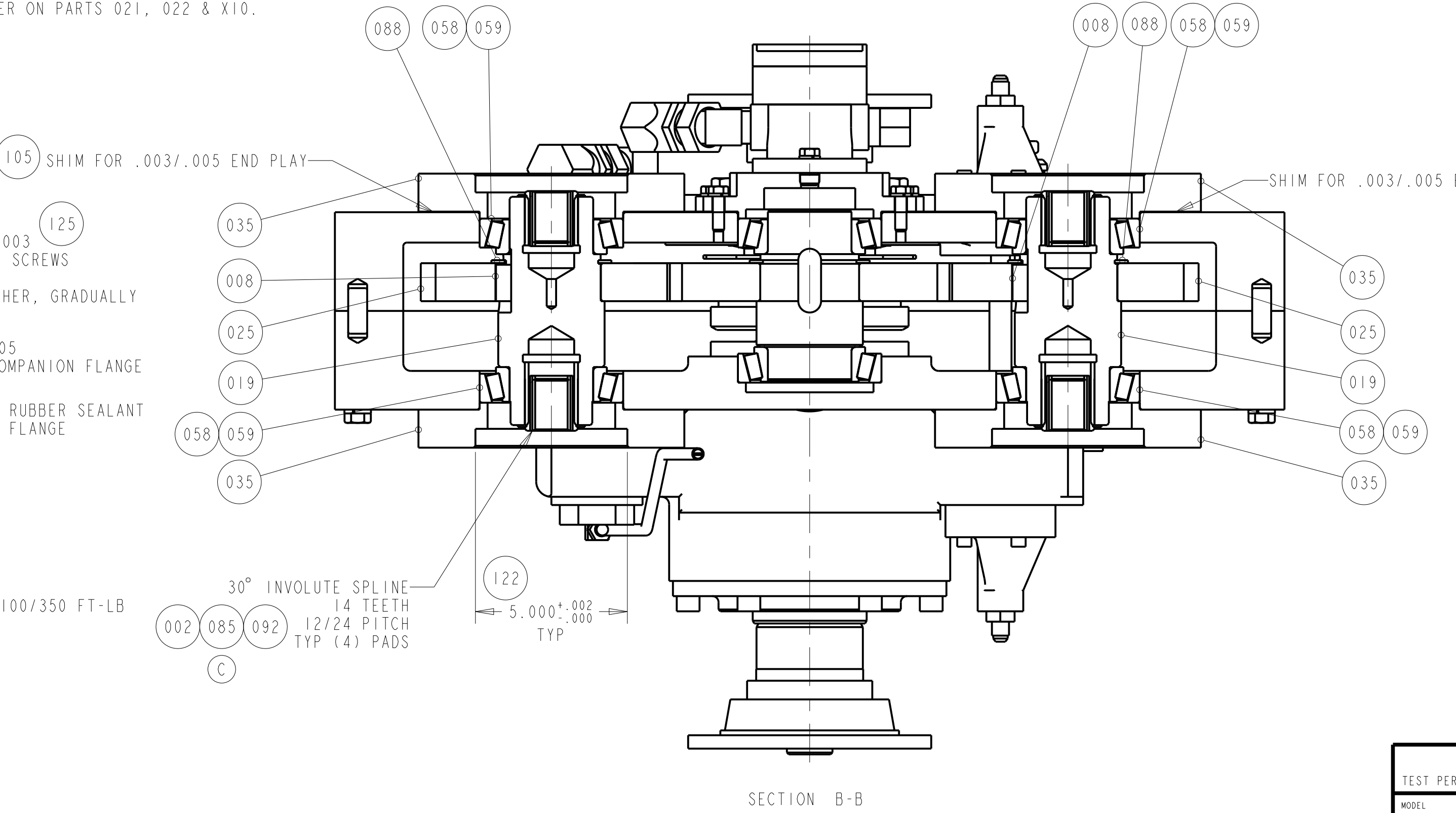
SECTION A-A



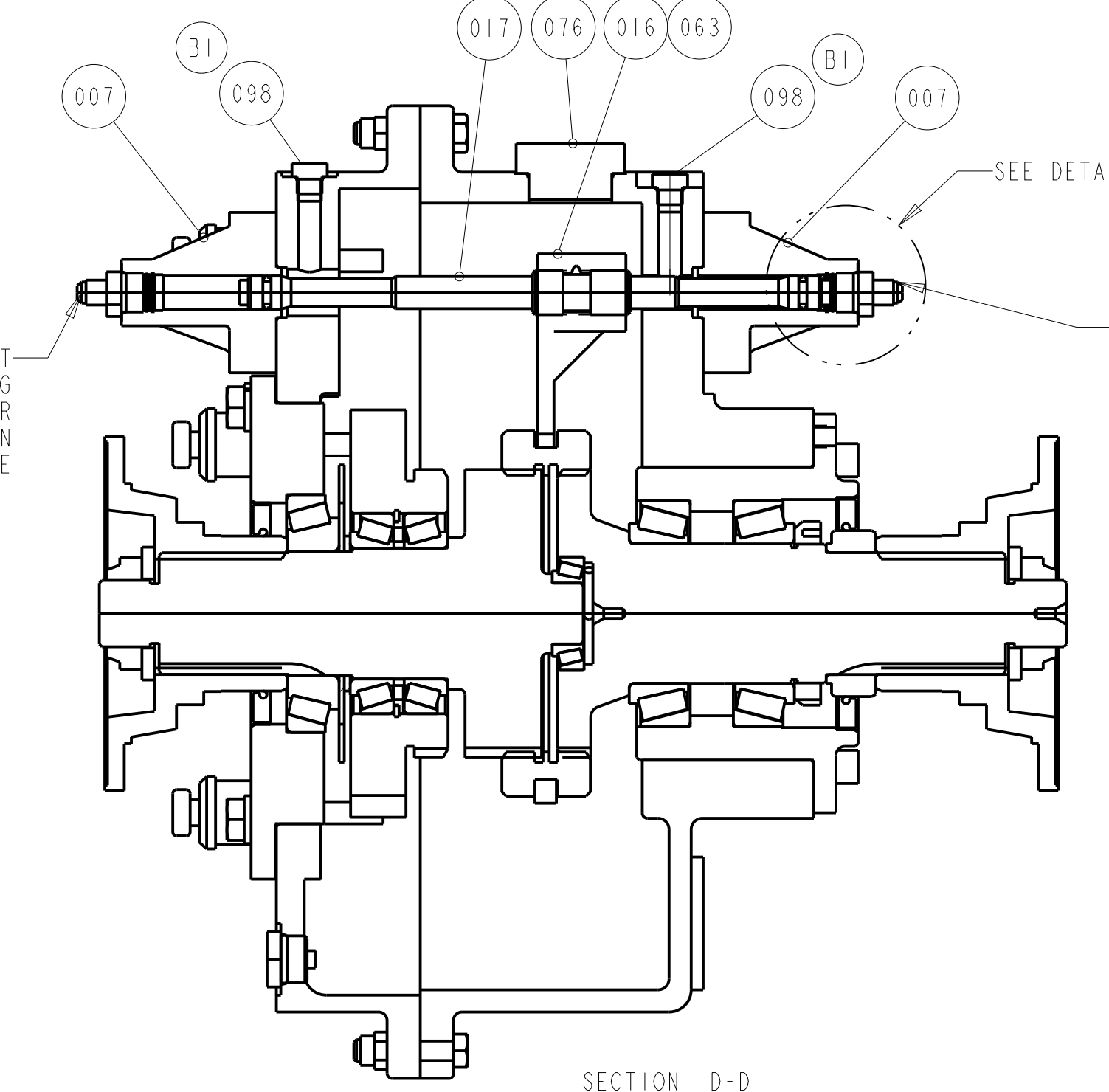
OPTIONAL SWITCH KIT - COTTA PART NUMBER 0628382A
KIT CONTAINS THE FOLLOWING PARTS:
A) 0626529B - PIN (1)
B) 0628171B - PIN (1)
C) 80KX103 - BALL (2)
D) 80TX800 - O-RING (2)
E) 80VX1785 - SWITCH (2)

NOTE: USE SILICONE RUBBER SEALANT AT ALL SPLITLINES
NOTE: APPLY (1) DROP LOCTITE THREAD LOCK OR EQUIVALENT TO ALL CAPSCREWS LOCATED IN THRU HOLES OF CASE & COVER
NOTE: STAMP SERIAL NUMBER ON PARTS 021, 022 & X10.

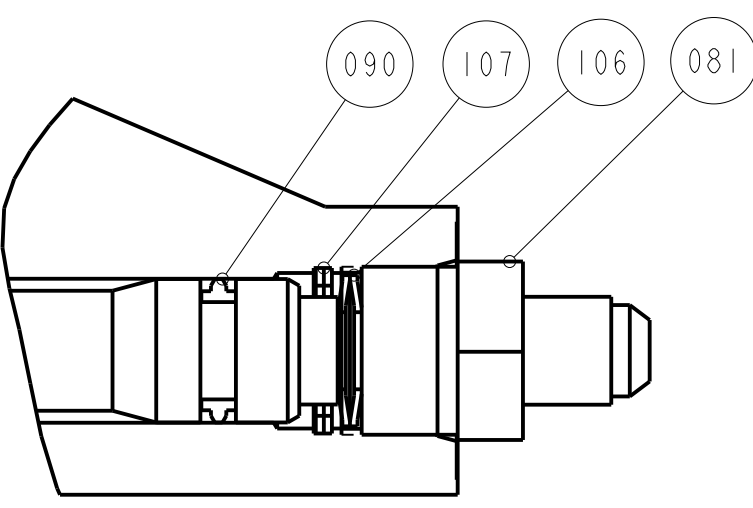
ADJUST LOCKNUT TO ATTAIN .001/.003 SHAFT END PLAY. TIGHTEN LOCKING SCREWS IN LOCKNUT TO 6 FT-LB. TIGHTEN EVENLY AND OPPOSITE TO ONE ANOTHER, GRADUALLY INCREASING THE TORQUE.
RADIAL PLAY .002/.005 MEASURED AT OD OF COMPANION FLANGE
INSTALL SILICONE RUBBER SEALANT BETWEEN WASHER & FLANGE TYP (2) PLACES
TORQUE TO 100/350 FT-LB TYP (2)



SECTION B-B



SECTION D-D



DETAIL C
SCALE 1.0
TYP BOTH ENDS

TEST PER SPECIFICATION DE-9905. REFERENCES: DE-0801, TB01-101, DE-0102		REVISION DATE	
		7-JUL-04	
MODEL	TR2165	COTTA TRANSMISSION COMPANY, LLC 1301 PRINCE HALL DRIVE, BELLOIT, WI 53511	
DRAWN	RJL	DATE	09-OCT-00
CHECKED	SBL	DATE	10-OCT-00
APPROVED	TAP	DATE	11-OCT-00
SCALE	0.312	SHEET	2 OF 2
DIMENSIONS ARE IN INCHES		PART NAME TRANSFER CASE	
		PART NUMBER TR2165-15	