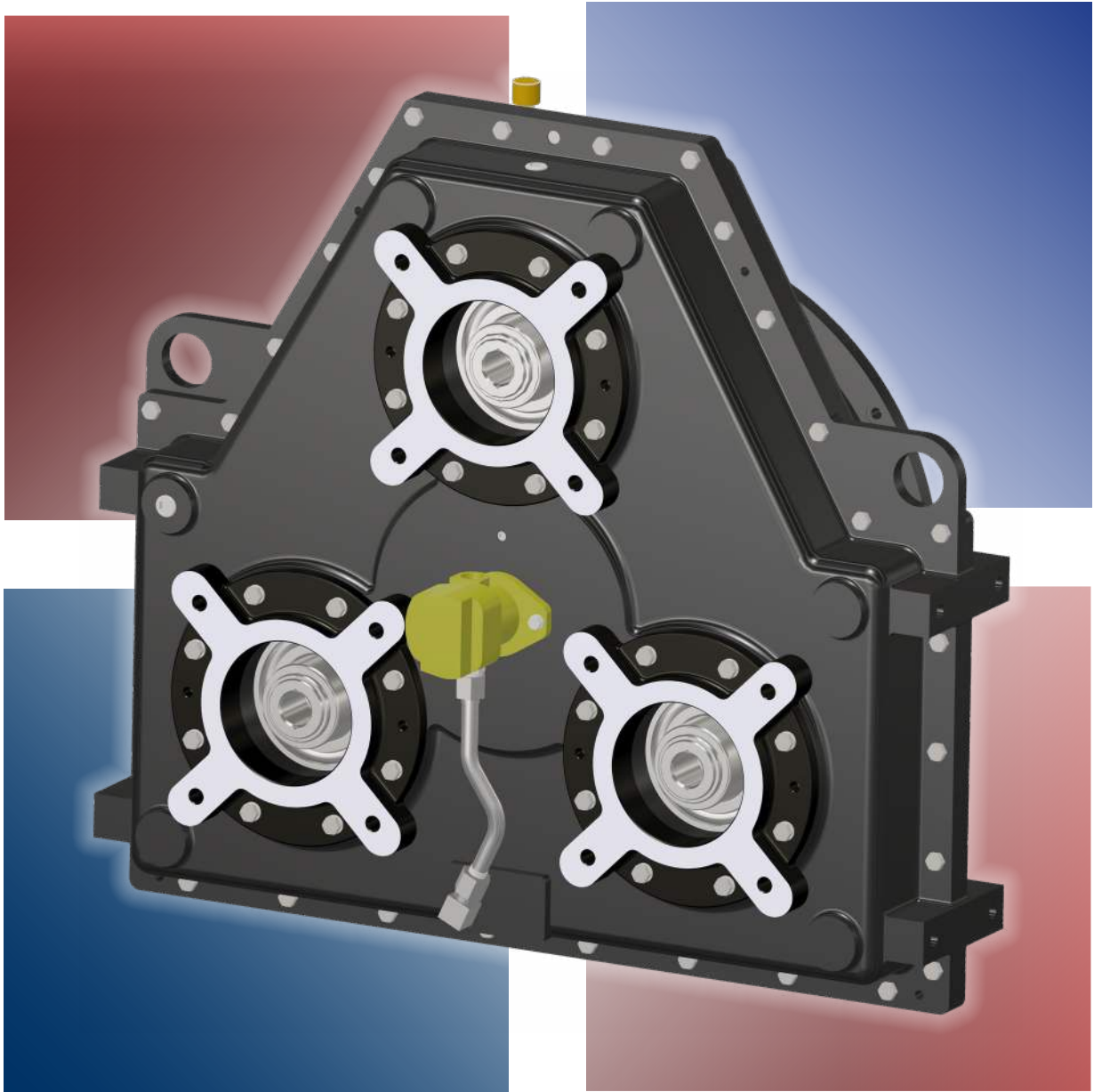


**Cotta**®

Transmission  
Company



## Heavy Duty Pump Drive Catalog

The products in this catalog are tabulated below in descending order by input HP. Make a selection by input power then refer to the individual spec sheet to determine if the power division between outputs is suitable for your specific application. Contact Cotta for assistance with pump drive selection or use the Cotta interactive Application Design Data form [by clicking here](#).

Model	Nominal Input HP	Input Torque (lb-ft)	Output Rotation	# of Outputs*
PD2263`	3000	10700	Anti Input	4/8
PD2266	2300	8600	Anti Input	4/8
PD420	1500	3600	Anti Input	2/4
PD430	1500	3600	Anti Input	3/6
PD440	1500	3600	Anti Input	4/8
PD2225	1350	3100	Same as Input	4
PD2255	1000	2500	Anti Input	4/8
PD450	500	1250	Same as Input	2/4

\* The trailing number listed indicates the maximum number of outputs possible by placing outputs on both sides of the pump drive case. Please contact Cotta for assistance with this option.

TOC   TAB

## Cotta Heavy Duty Pump Drive Catalog

Click anywhere in the line to navigate to page

Tabulation of Products . . . . .	2
Table of Contents. . . . .	3
MODEL PD2263 . . . . .	4
PD2263 DRW. . . . .	5
MODEL PD2266 . . . . .	6
PD2266 DRW. . . . .	7
MODEL PD420 . . . . .	8
PD420 DRW. . . . .	9
MODEL PD430 . . . . .	10
PD430 DRW. . . . .	11
MODEL PD440 . . . . .	12
PD440 DRW. . . . .	13
MODEL PD2225 . . . . .	14
PD2225 DRW. . . . .	15
MODEL PD2255 . . . . .	16
PD2255 DRW. . . . .	17
MODEL PD450 . . . . .	18
PD450 DRW. . . . .	19

TOC    TAB



# MODEL PD2263

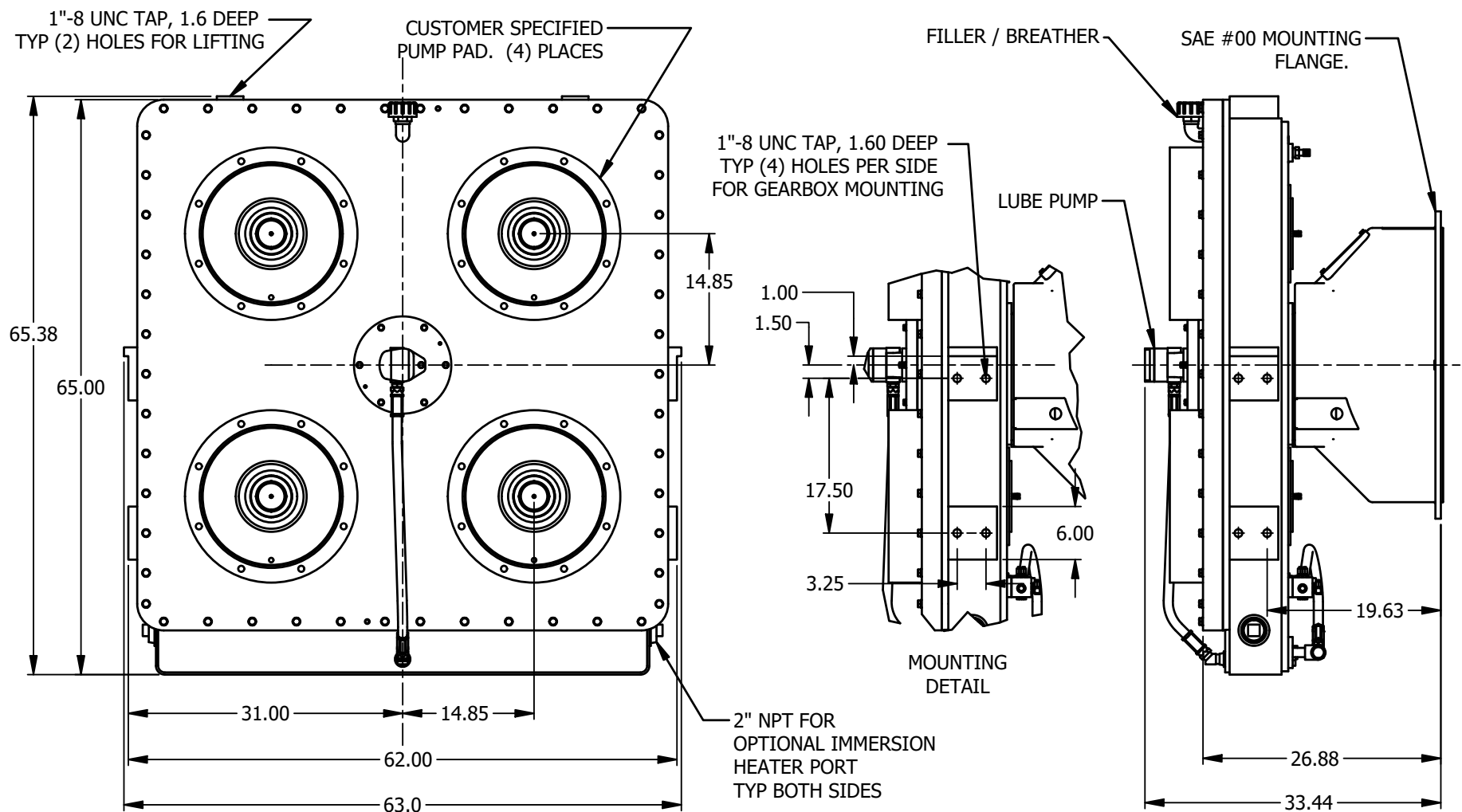
## PUMP DRIVE GEARBOX

### Product Description

Model PD2263 is a heavy duty 4-station pump drive offered in either direct engine mount via SAE flange, or independent mount. This unit has four output stations for fitment with SAE pump pads sizes “B” to “F” and various ISO and custom pads. Pad size and location are customer specified.

<b>MAX POWER:</b>	Input: 3000 HP Output: 825 HP at any output
<b>MAX INPUT SPEED:</b>	2100 RPM
<b>MAX TORQUE:</b>	10,700 lb-ft. input
<b>ROTATION:</b>	Output pads rotate opposite input
<b>RATIO:</b>	1:014 reduction
<b>OUTPUT OPTIONS:</b>	SAE, ISO, and custom pump pads. Custom shafts, disconnects, and clutches.
<b>MOUNTING OPTIONS:</b>	SAE flange size #00. Independent.
<b>FLYWHEEL COUPLING OPTIONS W/SAE FLANGE:</b>	Overcenter clutches, torsional couplings, drive plates, custom.
<b>LUBRICATION:</b>	Internal reservoir. Lube pump and filter included. Heat exchanger required.
<b>APPROXIMATE WEIGHT:</b>	6100 lbs.

TOC TAB





# MODEL PD2266

## PUMP DRIVE GEARBOX

### Product Description

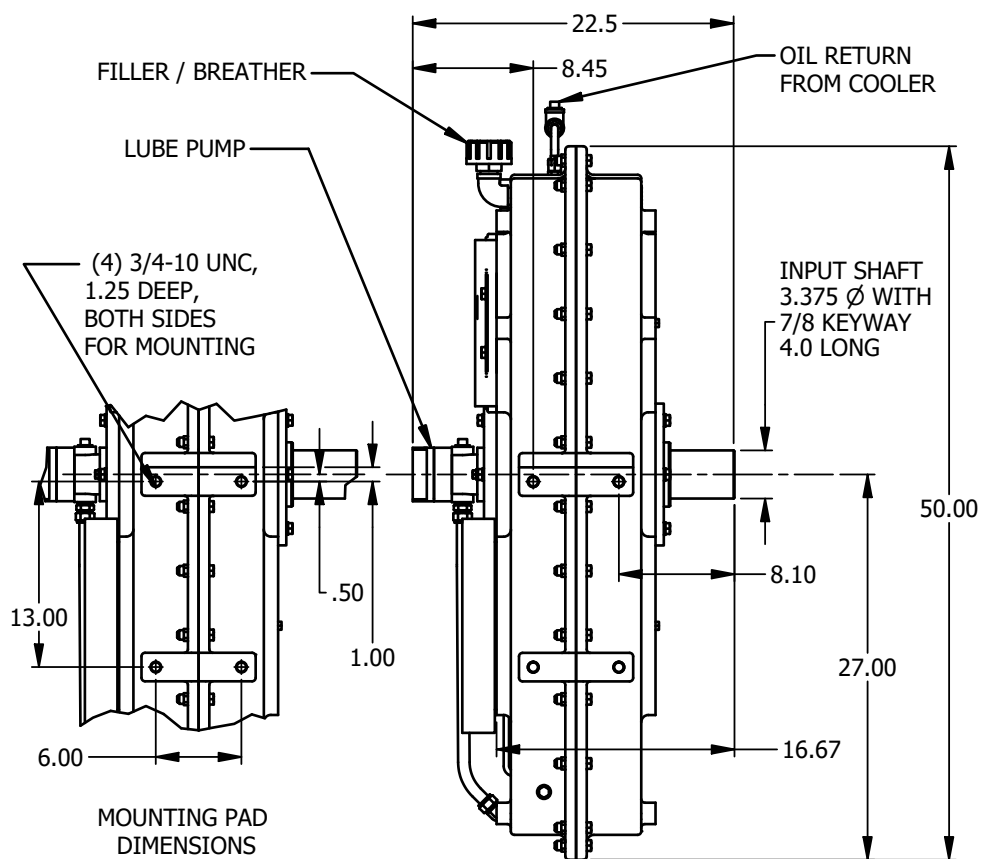
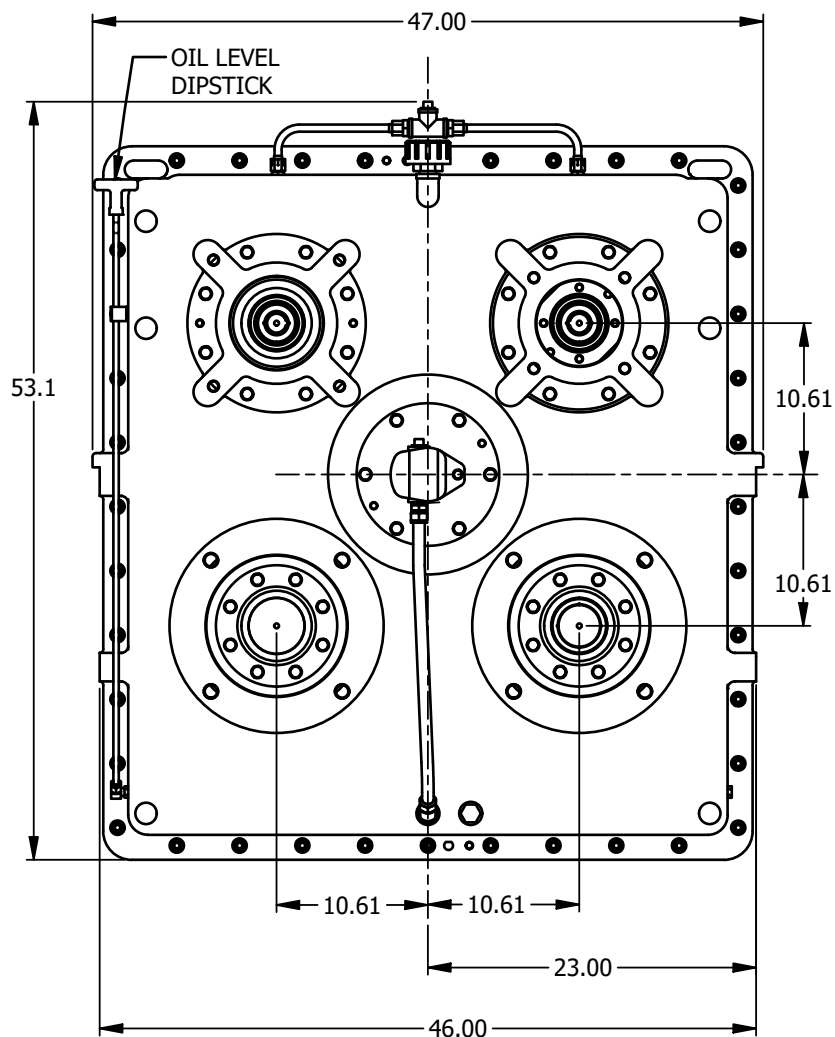
Model PD2266 is a heavy duty 4-station pump drive offered in either direct engine mount via SAE flange, or independent mount. This unit has four output stations for fitment with SAE pump pads sizes “B” to “F” and various ISO and custom pads. Pad size and location are customer specified.

<b>MAX POWER:</b>	Input: 2300 HP Output: Up to 1800 HP at any output
<b>MAX INPUT SPEED:</b>	2000 RPM
<b>MAX TORQUE:</b>	Input: 8600 lb-ft. Output: Up to 5300 lb-ft at any output
<b>ROTATION:</b>	Output pads rotate opposite input
<b>RATIO:</b>	1:1 1.17:1, 1.29:1 reduction
<b>OUTPUT OPTIONS:</b>	SAE, ISO, and custom pump pads. Custom shafts, disconnects and clutches.
<b>MOUNTING OPTIONS:</b>	SAE flange size #00 or #00. Remote mount, shaft coupling connected.
<b>FLYWHEEL COUPLING OPTIONS W/SAE FLANGE:</b>	Overcenter clutches, torsional couplings, drive plates, custom.
<b>LUBRICATION:</b>	Internal reservoir. Lube pump included. Heat exchanger required.
<b>APPROXIMATE WEIGHT:</b>	3000 lbs.

TOC TAB



**TAB**  
This drawing shows general arrangement and approximate space claim. Do not scale, design, or lay out using this drawing. Use only certified drawings provided by Cotta Engineering.



**COTTA PAD KIT OPTIONS**

SAE "B", 2 AND 4 BOLT  
SAE "C", 2 AND 4 BOLT  
SAE "D", 4 BOLT  
SAE "E", 4 BOLT  
SAE "F", 4 BOLT  
250 mm DIN  
315 mm DIN

**COTTA SPLINE KIT OPTIONS**

SAE "B-B", 15 TOOTH SPLINE  
SAE "C", 14 TOOTH SPLINE  
SAE "D", "E", 13 TOOTH SPLINE  
SAE "F", 15 TOOTH SPLINE  
17 TOOTH, 8/16 PITCH SPLINE  
DIN 5480, N80 X 3 X 25

TOC TAB

**PD2266 DRW.**



# MODEL PD420

## PUMP DRIVE GEARBOX

### Product Description

Model PD420 is a heavy duty two output pump drive offered in both direct engine mount via SAE flange and independent mount. The output stations are designed to accommodate Cotta pump pad kits in sizes from SAE B to SAE F, as well as various ISO and custom pads. Pad size and location are customer specified and can be moved or interchanged on most units without the necessity to remove or disassemble the gearbox. A special version of this pump drive can host 4 pumps by locating pump pads on both sides of the case. The 4 pump option is only available in independent mount.

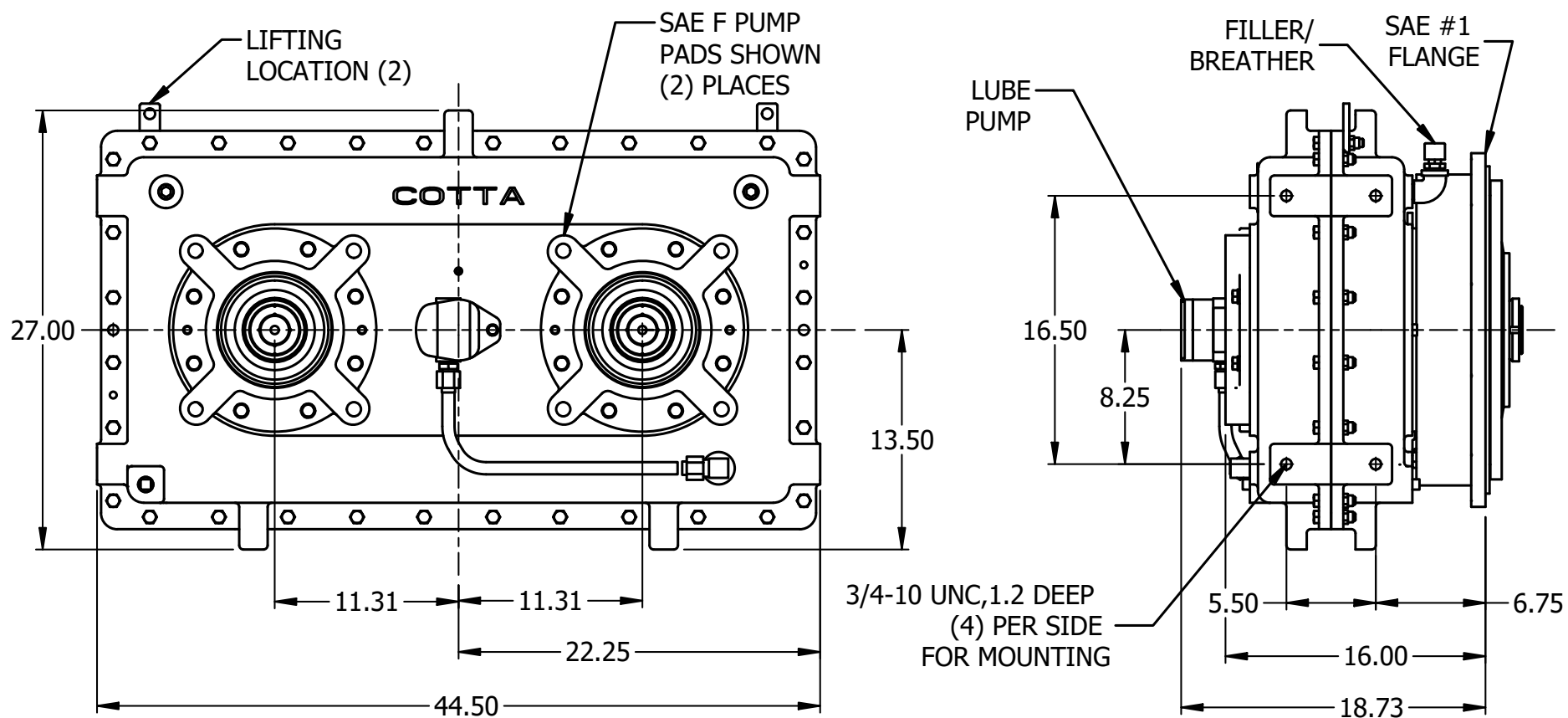
<b>POWER:</b>	1500 HP max input 900 HP max per output
<b>MAX INPUT / OUTPUT SPEED:</b>	2200/2600 rpm
<b>MAX TORQUE:</b>	Input: 3600 lb-ft Per output station: 2150 lb-ft.
<b>RATIO:</b>	Overspeed: 1.177, 1.11, 1.015
<b>ROTATION:</b>	Outputs rotate opposite to input.
<b>OUTPUT OPTIONS:</b>	Various SAE and ISO pump pads. PTO shafts, disconnects, clutches, custom.
<b>MOUNTING OPTIONS:</b>	SAE flange size #0, #1. Independent.
<b>FLYWHEEL COUPLING OPTIONS:</b>	Overcenter clutches, torsional couplings, drive plates, custom.
<b>LUBRICATION:</b>	Internal reservoir. Lube pump furnished, heat exchanger required.
<b>APPROXIMATE WEIGHT:</b>	1500 lbs.

TOC TAB





This drawing shows general arrangement and approximate space claim. Do not scale, design, or lay out using this drawing. Use only certified drawings provided by Cotta Engineering.



TOC TAB

PD420 DRW.



# MODEL PD430

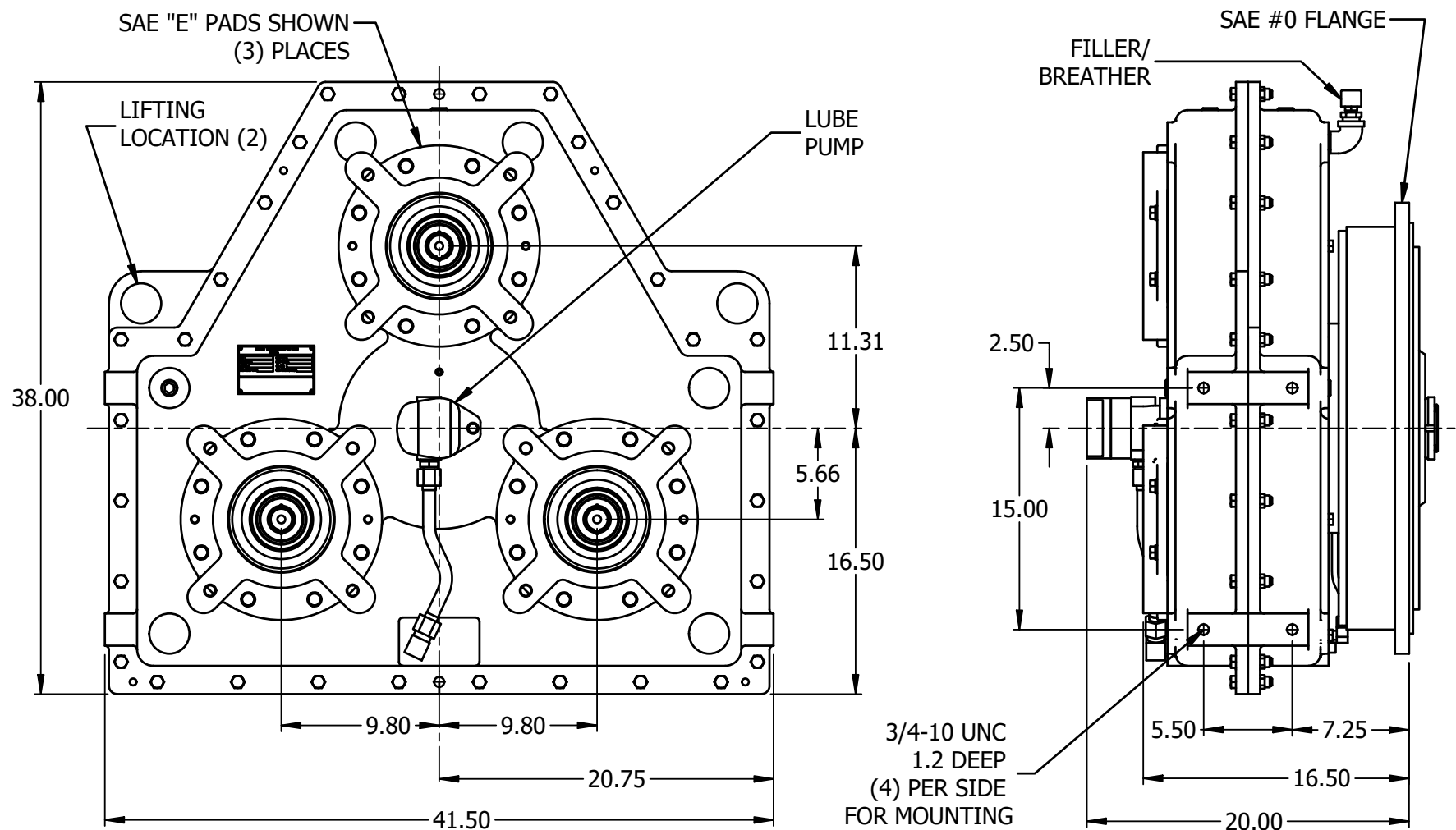
## PUMP DRIVE GEARBOX

### Product Description

Model PD430 is a heavy duty three output pump drive offered in both direct engine mount via SAE flange and independent mount. The output stations are designed to accommodate Cotta pump pad kits in sizes from SAE B to SAE F, as well as various ISO and custom pads. Pad size and location are customer specified and can be moved or interchanged on most units without the necessity to remove or disassemble the gearbox. A special version of this pump drive can host 6 pumps by locating pump pads on both sides of the case. The 6 pump option is only available in independent mount.

<b>POWER:</b>	1500 HP max input 900 HP max per output
<b>MAX INPUT / OUTPUT SPEED:</b>	2200 / 2600 rpm
<b>MAX TORQUE:</b>	Input: 3600 lb-ft Per output station: 2150 lb-ft.
<b>RATIO:</b>	Overspeed: 1.177, 1.11, 1.015
<b>ROTATION:</b>	Outputs rotate opposite to input.
<b>OUTPUT OPTIONS:</b>	Various SAE and ISO pump pads. PTO shafts, disconnects, clutches, custom.
<b>MOUNTING OPTIONS:</b>	SAE flange size #0, #1. Independent.
<b>FLYWHEEL COUPLING OPTIONS:</b>	Overcenter clutches, torsional couplings, drive plates, custom.
<b>LUBRICATION:</b>	Internal reservoir. Lube pump furnished, heat exchanger required.
<b>APPROXIMATE WEIGHT:</b>	1750 lbs.

TOC TAB



TOC TAB

**PD430 DRW.**



# MODEL PD440

## PUMP DRIVE GEARBOX

### Product Description

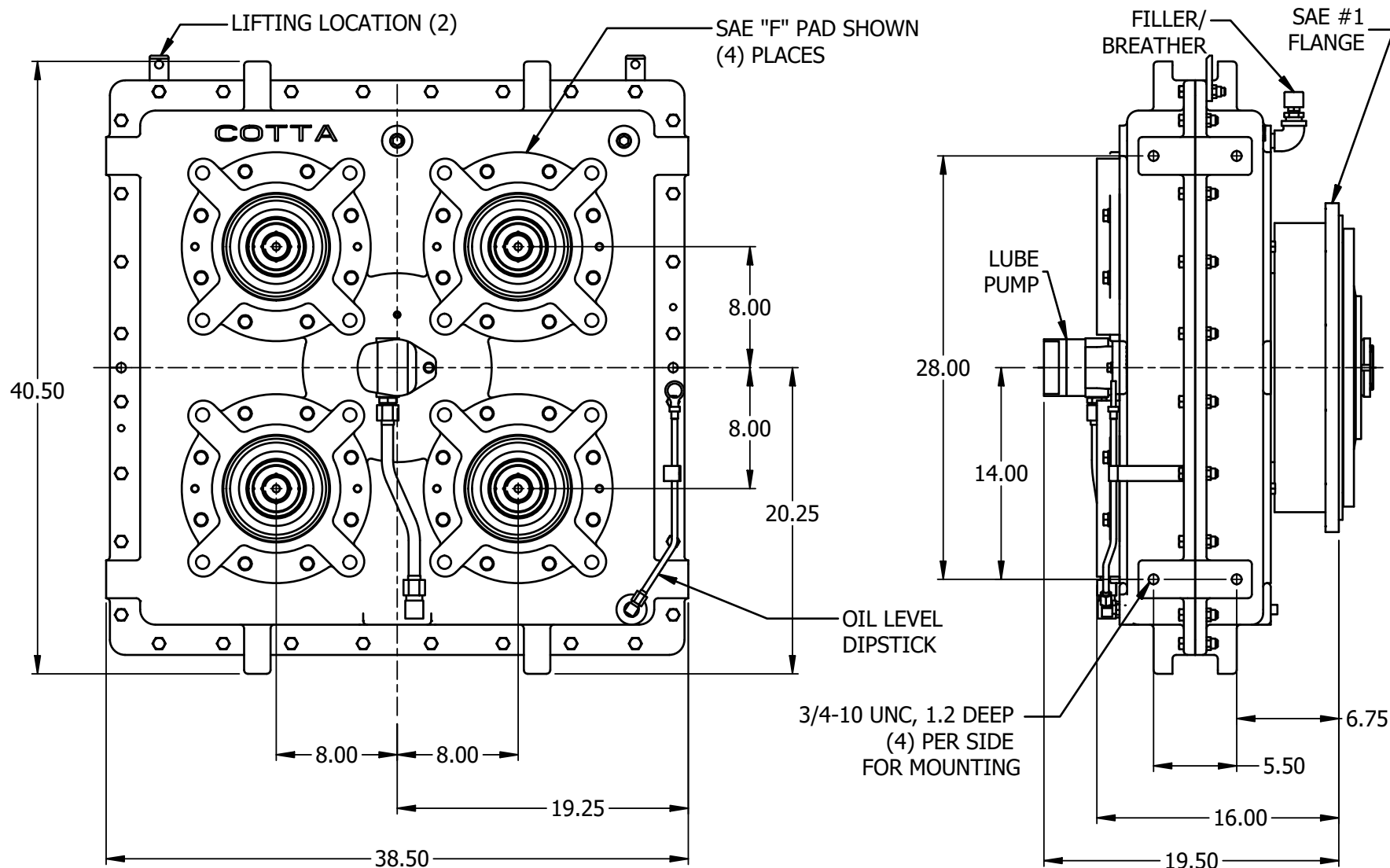
Model PD440 is a heavy duty four output pump drive offered in both direct engine mount via SAE flange and independent mount. The output stations are designed to accommodate Cotta pump pad kits in sizes from SAE B to SAE F, as well as various ISO and custom Pad size and location are customer specified and can be moved or interchanged on most units without the necessity to remove or disassemble the gearbox. A special version of this pump drive can host 8 pumps by locating pump pads on both sides of the case. The 8 pump option is only available in independent mount.

<b>POWER:</b>	1500 HP max input 900 HP max per output
<b>MAX INPUT / OUTPUT SPEED:</b>	2200/2600 rpm
<b>MAX TORQUE:</b>	Input: 3600 lb-ft Per output station: 2150 lb-ft.
<b>RATIO:</b>	Overspeed: 1.177, 1.11, 1.015
<b>ROTATION:</b>	Outputs rotate opposite to input.
<b>OUTPUT OPTIONS:</b>	Various SAE and ISO pump pads. PTO shafts, disconnects, clutches, custom.
<b>MOUNTING OPTIONS:</b>	SAE flange size #0, #1. Independent.
<b>FLYWHEEL COUPLING OPTIONS:</b>	Overcenter clutches, torsional couplings, drive plates, custom.
<b>LUBRICATION:</b>	Internal reservoir. Lube pump furnished, heat exchanger required.
<b>APPROXIMATE WEIGHT:</b>	2100 lbs.

TOC TAB



This drawing shows general arrangement and approximate space claim. Do not scale, design, or lay out using this drawing. Use only certified drawings provided by Cotta Engineering.



TOC TAB

PD440 DRW.



# MODEL PD2225

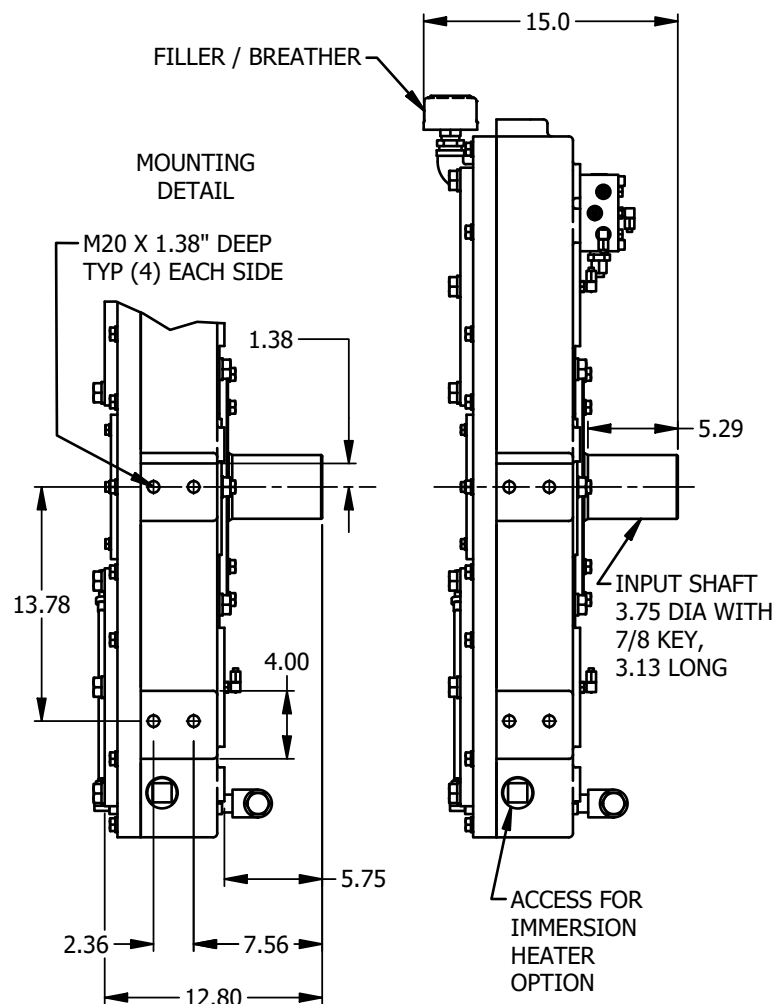
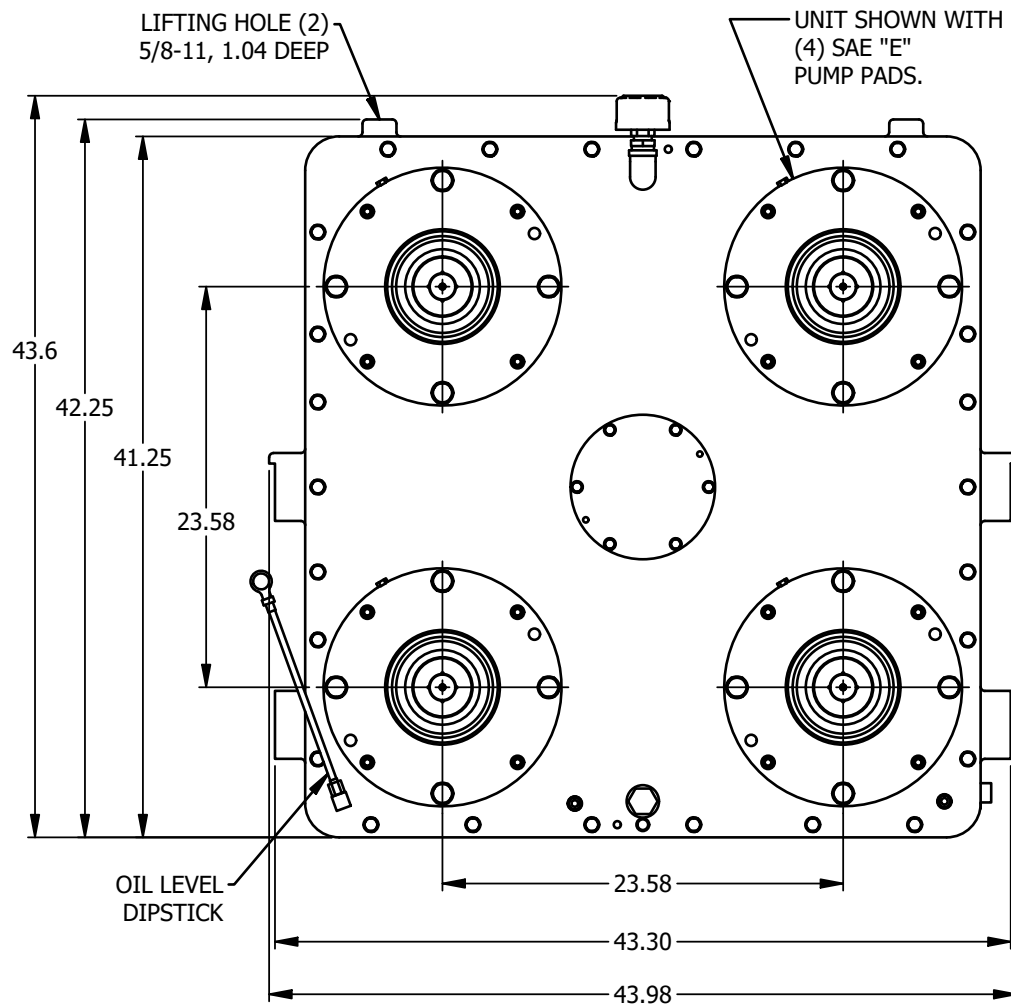
## PUMP DRIVE GEARBOX

### Product Description

Model PD2225 is a heavy duty 4-station pump drive offered in either direct engine mount via SAE flange, or independent mount. This unit incorporates counter shafts to provide output stations that rotate the same direction as the input shaft. The input shaft can be extended through the case for use as a PTO shaft, lube-pump drive, or additional pump pad.

<b>POWER:</b>	1350 HP max input 270 HP max per output
<b>MAX INPUT / OUTPUT SPEED:</b>	2100 RPM
<b>MAX TORQUE:</b>	Input: 3100 lb-ft Through shaft: 1500 lb-ft
<b>RATIO:</b>	1:1
<b>ROTATION:</b>	Outputs rotate same direction as input.
<b>OUTPUT OPTIONS:</b>	Various SAE and ISO pump pads. PTO shafts, disconnects, clutches, custom.
<b>MOUNTING OPTIONS:</b>	SAE flange sizes #00, #0, #1. Independent.
<b>FLYWHEEL COUPLING OPTIONS:</b>	Overcenter clutches, torsional couplings, drive plates, custom.
<b>LUBRICATION:</b>	Internal reservoir. Lube pump and heat exchanger required. Option for customer supplied sump heater.
<b>APPROXIMATE WEIGHT:</b>	2000 lbs.

TOC    TAB



TOC TAB

**PD2225 DRW.**



# MODEL PD2255

## PUMP DRIVE GEARBOX

### Product Description

Model PD2255 is a heavy duty 4-station pump drive offered in either direct engine mount via SAE flange, or independent mount. This unit has four identical output stations designed to accommodate Cotta pad kits in sizes from SAE B to SAE F, and various ISO and custom pads as listed on the spec drawing. Pad size and location are customer specified and can be moved or interchanged on most units without the necessity to remove or disassemble the unit.

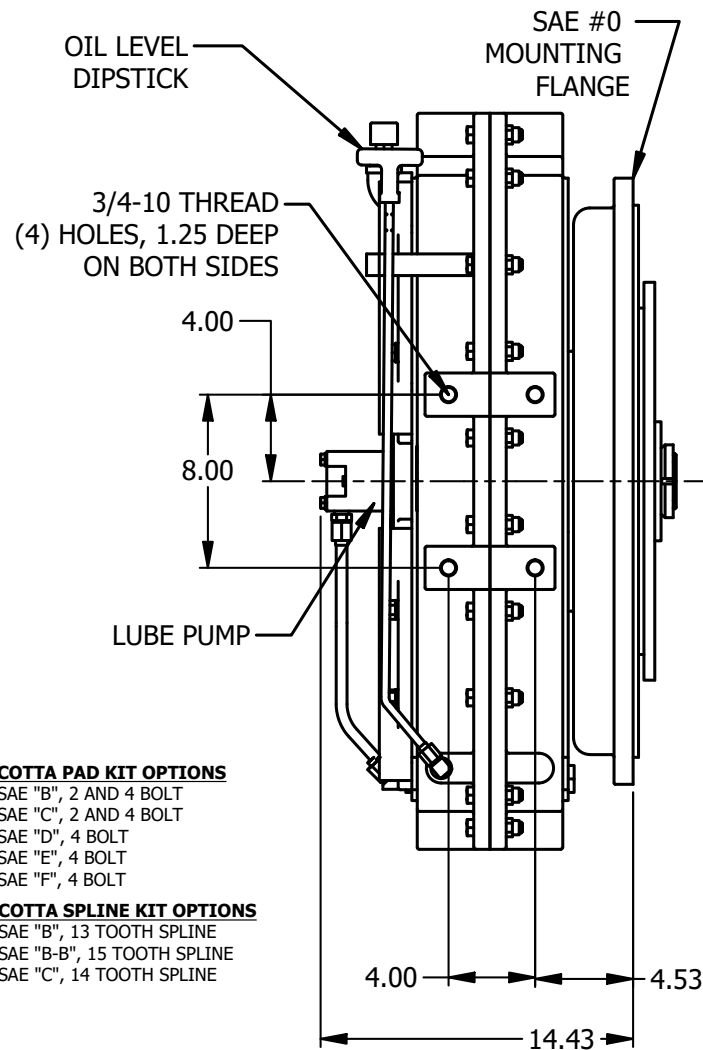
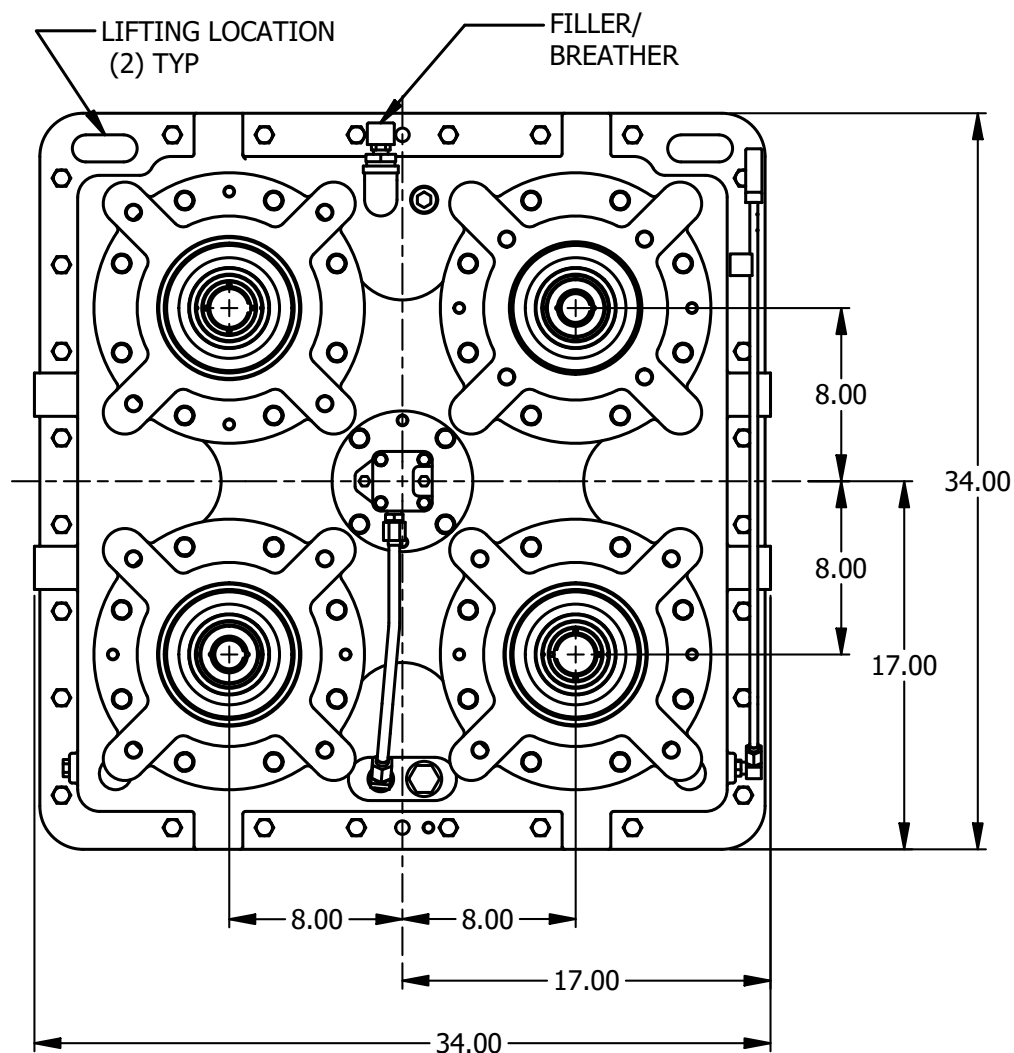
<b>POWER:</b>	Input: 1000 HP Output: 950 HP max @ any output
<b>MAX INPUT SPEED:</b>	2200 RPM
<b>MAX INPUT TORQUE:</b>	2500 lb-ft.
<b>ROTATION:</b>	Output pads rotate opposite input
<b>RATIO RANGE:</b>	Reduction: 1.143 Overspeed: 1.015, 1.177, 1.213
<b>OUTPUT OPTIONS:</b>	See spec drawing for listing of pad kits
<b>MOUNTING OPTIONS:</b>	SAE flange sizes #0, #1. Independent.
<b>FLYWHEEL COUPLING OPTIONS W/SAE FLANGE:</b>	Overcenter clutches, torsional couplings, drive plates, custom.
<b>LUBRICATION:</b>	Internal reservoir. Lube pump included. Heat exchanger required.
<b>APPROXIMATE WEIGHT:</b>	1400 lbs.

TOC TAB





This drawing shows general arrangement and approximate space claim. Do not scale, design, or lay out using this drawing. Use only certified drawings provided by Cotta Engineering.



**COTTA PAD KIT OPTIONS**

SAE "B", 2 AND 4 BOLT  
SAE "C", 2 AND 4 BOLT  
SAE "D", 4 BOLT  
SAE "E", 4 BOLT  
SAE "F", 4 BOLT

**COTTA SPLINE KIT OPTIONS**

SAE "B", 13 TOOTH SPLINE  
SAE "B-B", 15 TOOTH SPLINE  
SAE "C", 14 TOOTH SPLINE

TOC TAB

**PD2255 DRW.**



# MODEL PD450

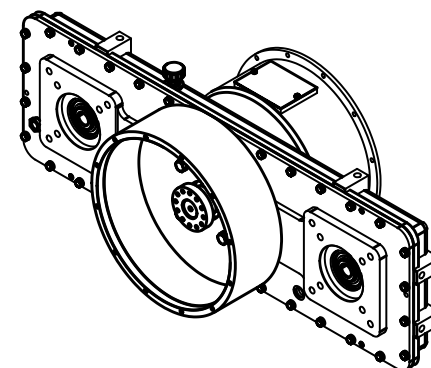
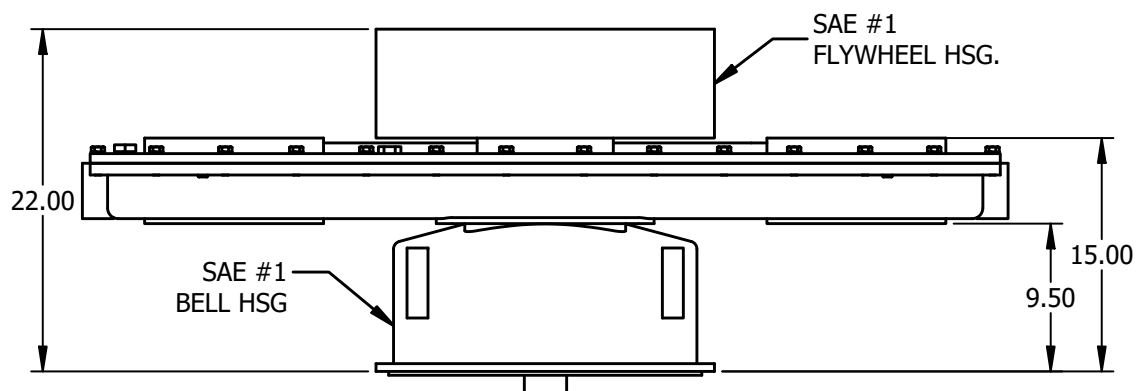
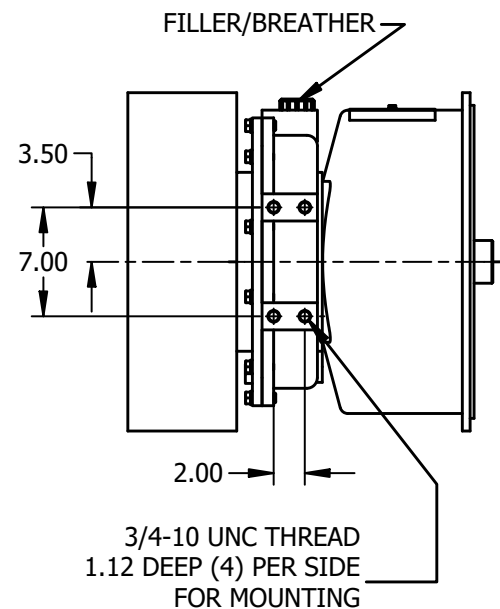
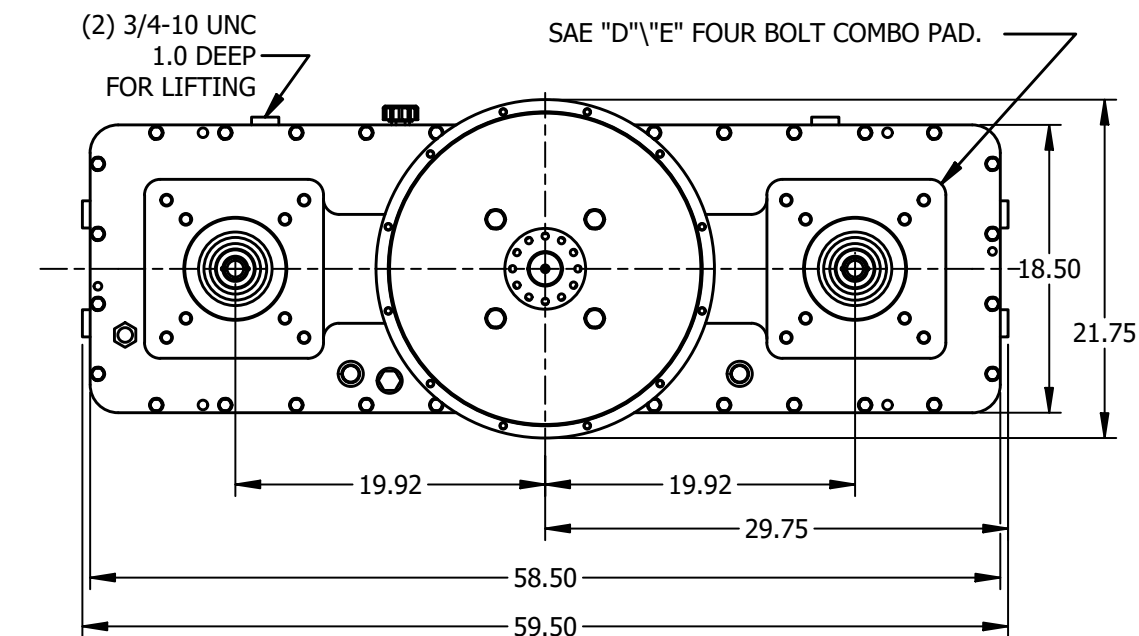
## PUMP DRIVE GEARBOX

### Product Description

Model PD450 is a special purpose pump drive designed to direct mount to an engine via SAE #1 flange and also host an SAE#1 output flange in a flange-to-flange configuration. The gearbox provides 2 output stations on the horizontal centerline of the SAE flange. Idler gears are incorporated to provide sufficient spread between pump centers to accommodate both the pumps and the SAE input and output flanges. A special version of this pump drive can host 4 pumps by locating pump pads on both sides of the case.

<b>MAX INPUT POWER:</b>	500 HP
<b>MAX INPUT / OUTPUT SPEED:</b>	2100 RPM
<b>MAX TORQUE:</b>	Input: 1250 lb-ft Pump pad: 500 lb-ft. Through shaft: 1000 lb-ft
<b>RATIO:</b>	1:1, 1.18:1 reduction or increase
<b>MOUNTING OPTIONS:</b>	SAE #1 flange. Independent.
<b>FLYWHEEL COUPLING OPTIONS:</b>	Overcenter clutches, torsional couplings, drive plates, custom.
<b>OUTPUT OPTIONS:</b>	Various SAE and ISO pump pads. PTO shafts, disconnects, clutches, custom. SAE #1 flange.
<b>ROTATION:</b>	Outputs rotate same direction as input.
<b>LUBRICATION:</b>	Internal reservoir.
<b>APPROXIMATE WEIGHT:</b>	1450 lbs.

TOC   TAB



TOC TAB

PD450 DRW.



ISO 9001 Quality  
Management



*Global Supplier of Power Transmission Systems and Components*

**Cotta Transmission  
Company, LLC  
1301 Prince Hall Drive  
Beloit, WI 53511**

608-368-5600  
[www.cotta.com](http://www.cotta.com)

**Member  
American Gear  
Manufacturers  
Association**

