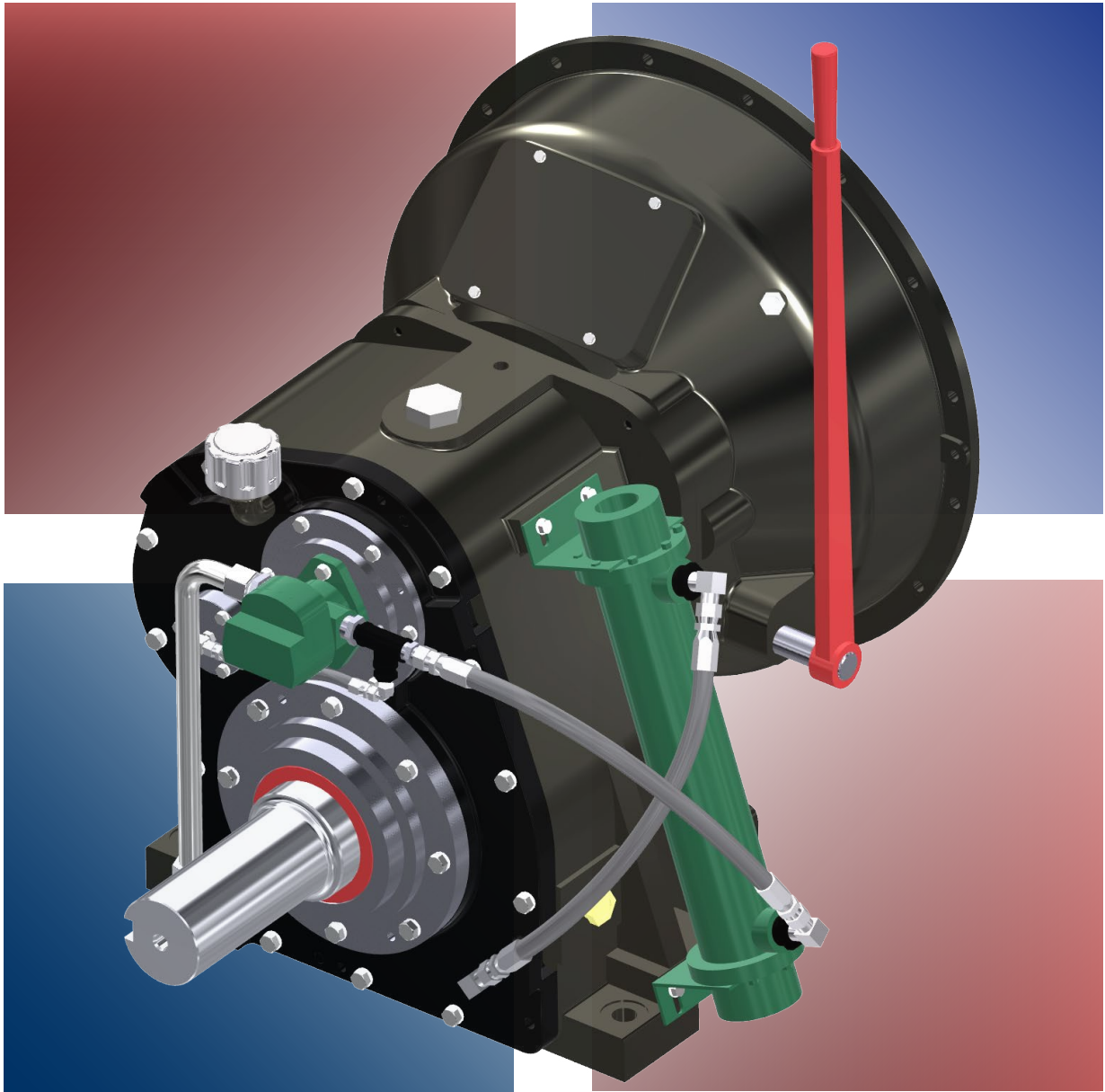


Cotta®

Transmission
Company



Speed Reducer Catalog



**SPEED
REDUCERS**

Speed Reducer Overview

Cotta Speed Reducers are designed for use with the commercial offerings of major Industrial engine manufacturers. The reducers are furnished with bell housings to mount directly to the engine's SAE flywheel housing.

Speed Reducers are available in increasing sizes from nominally 100 HP to 2200 HP and with flywheel housing sizes from SAE 4 to 00. At approximately 2200 HP capacity the gearboxes become physically too large to direct engine mount at which point independent mount gearboxes are offered.

Speed Reducers can be coupled to the engine by a variety of methods including clutches, drive plates, or torsional couplings depending upon the application requirements.

Some of the reducers are suitable for driving side pull loads using belts or chains on the output shaft. Consult with Cotta Engineering before selecting a gearbox for use with a side pull load.

This catalog is organized into a standard-ratio section and a high-ratio section with each sorted from smallest to largest by power capacity. These gearboxes are considered "standards" but are not the only reducers available. Cotta offers modified standard boxes as well as full-custom and purpose-built.

Cotta Speed Reducers have a standard location of the output shaft at 6 o'clock to the input. Alternate locations such as 3, 9, and 12 o'clock are available on many units.

In order to make an initial selection of a Speed Reducer you will need the following information:

- Engine HP
- Transmitted (load) HP
- Engine flywheel housing size
- Coupling option (clutch, torsional coupling, etc)
- Output rotation (same as engine, or opposite)
- Side load or in-line
- Application

An application worksheet to help you summarize and submit the required information is available from the Cotta web site. [Click here.](#)

Speed Reducer Tabulation

MODEL	MAX INPUT TORQUE (lb-ft)	MAX INPUT SPEED (RPM)	OUTPUT ROTATION		RATIO RANGE	SAE BELL HSG SIZE #	INPUT COUPLING SAE SIZE
			SAME AS INPUT	ANTI INPUT			
AR2053A	400	3000		X	1.0 to 3.94	4, 3, 2	To SAE 11 in.
AR2053E	300	3000	X		1.5 to 4.0	4, 3, 2	To SAE 11 in.
SR700A	650	2500		X	1.5 to 2.0	1	To SAE 14 in.
SR700E	650	2500	X		1.43 to 1.95	1	To SAE 14 in.
SR2A	800	3000		X	1.0 to 3.07	1, 2, 3	To SAE 11 in.
SR2E	600	3000	X		1.42 to 3.0	1, 2, 3	To SAE 14 in.
SR3A	1400	3000		X	1.0 to 3.04	0, 1, 2	To SAE 18 in.
SR3E	900	3000	X		1.2 to 3.0	0, 1, 2	To SAE 18 in.
GR15A	1450	2350		X	1.08 to 2.46	00, 1/2, 0, 1	To SAE 24 in.
GR15E	1450	2300	X		1.28 to 2.43	00, 1/2, 0, 1	To SAE 24 in.
GR16A	1650	2200		X	1.5 to 3.0	00, 1/2, 0, 1	To SAE 24 in.
GR16E	1650	2200	X		1.5 to 3.0	00, 1/2, 0, 1	To SAE 24 in.
GR1600A	3000	2200		X	1.35 to 3.07	00, 1/2, 0, 1	To SAE 24 in.
GR1600E	2600	2200	X		1.28 to 3.0	00, 1/2, 0, 1	To SAE 24 in.
GR3200A	5500	2200		X	1.19 to 2.89	00, 0	To SAE 24 in.
GR3200E	4500	2200	X		1.2 to 3.13	00, 0	To SAE 24 in.
High Ratio Speed Reducers							
SR12A	750	2500		X	1.03 to 3.87	0, 1, 2	To SAE 18 in.
SR12E	750	2500	X		1.3 to 3.92	0, 1, 2	To SAE 18 in.
SR2030A	750	2500		X	3.45 to 5.17	0, 1, 2, 3	To SAE 18 in.
SR2030E	750	2500	X		3.22 to 5.20	0, 1, 2, 3	To SAE 18 in.
SR972A	1000	2200		X	3.49 to 6.25	0, 1	To SAE 18 in.
SR972E	1000	2200	X		3.09 to 6.25	0, 1	To SAE 18 in.
SR2031	1150	2500	X		3.5 to 7.05	0, 1	To SAE 18 in.
GR975200	2400	2200	X		3.49 to 6.58	00, 0, 1	To SAE 24 in.



Table of Contents

Speed Reducer Overview	2	MODEL GR1600A	29
Speed Reducer Tabulation	3	GR1600A DRAWING	30
Table of Contents	4	MODEL GR1600E	31
		GR1600E DRAWING	32
MODEL AR2053A	5	MODEL GR3200A	33
AR2053A DRAWING	6	GR3200A DRAWING	34
MODEL AR2053E	7	MODEL GR3200E	35
AR2053E DRAWING	8	GR3200E DRAWING	36
MODEL SR700A	9		
SR700A DRAWING	10	High Ratio Speed Reducer Section	37
MODEL 700E	11		
SR700E DRAWING	12	MODEL SR12A	38
MODEL SR2A	13	SR12A DRAWING	39
SR2A DRAWING	14	MODEL SR12E	40
MODEL SR2E	15	SR12E DRAWING	41
SR2E DRAWING	16	MODEL SR2030A	42
MODEL SR3A	17	SR2030A DRAWING	43
SR3A DRAWING	18	MODEL SR2030E	44
MODEL SR3E	19	SR2030E DRAWING	45
SR3E DRAWING	20	MODEL SR972A	46
MODEL GR15A	21	SR972A DRAWING	47
GR15A DRAWING	22	MODEL SR972E	48
MODEL GR15E	23	SR972E DRAWING	49
GR15E DRAWING	24	MODEL SR2031E	50
MODEL GR16A	25	SR2031E DRAWING	51
GR16A DRAWING	26	MODEL GR975200	52
MODEL GR16E	27	GR975200 DRAWING	53
GR16E DRAWING	28		



MODEL AR2053A

SPEED REDUCER

Product Description

Model AR2053A is a single-stage reduction gearbox designed for direct mounting to industrial engines via an SAE flange and driven in standard engine rotation (CW facing input shaft). Tabulated below are nominal power and speed capacity together with standard options. Contact Cotta to discuss other options or specialized requirements.

OUTPUT ROTATION:	Opposite input
MAX INPUT TORQUE:	500 lb-ft.
MAX INPUT SPEED:	3000 rpm or as otherwise limited by input coupling or clutch.
RATIOS:	1.0 to 3.0 std. 3.94 by special order
OUTPUT SHAFT SIZE:	2.25" dia., X 5" long. 5/8" X 5/16" keyway
OUTPUT SHAFT LOCATION:	6 o'clock std, 12, 3, and 9 o'clock optional
SAE HOUSINGS:	#2, #3, #4
*FLYWHEEL COUPLINGS:	Clutches, couplings, and drive plates up to SAE 11".
REAR SUPPORT:	Required. Customer supplied item. Mounting holes provided per dwg.
LUBRICATION:	Splash standard, pump optional.
COOLING:	Oil/water shell-and-tube cooler furnished if required. Various options.
**SIDE LOAD CAPABLE:	No. Contact Cotta for recommendations.
***APPROXIMATE WEIGHT:	400 lbs.

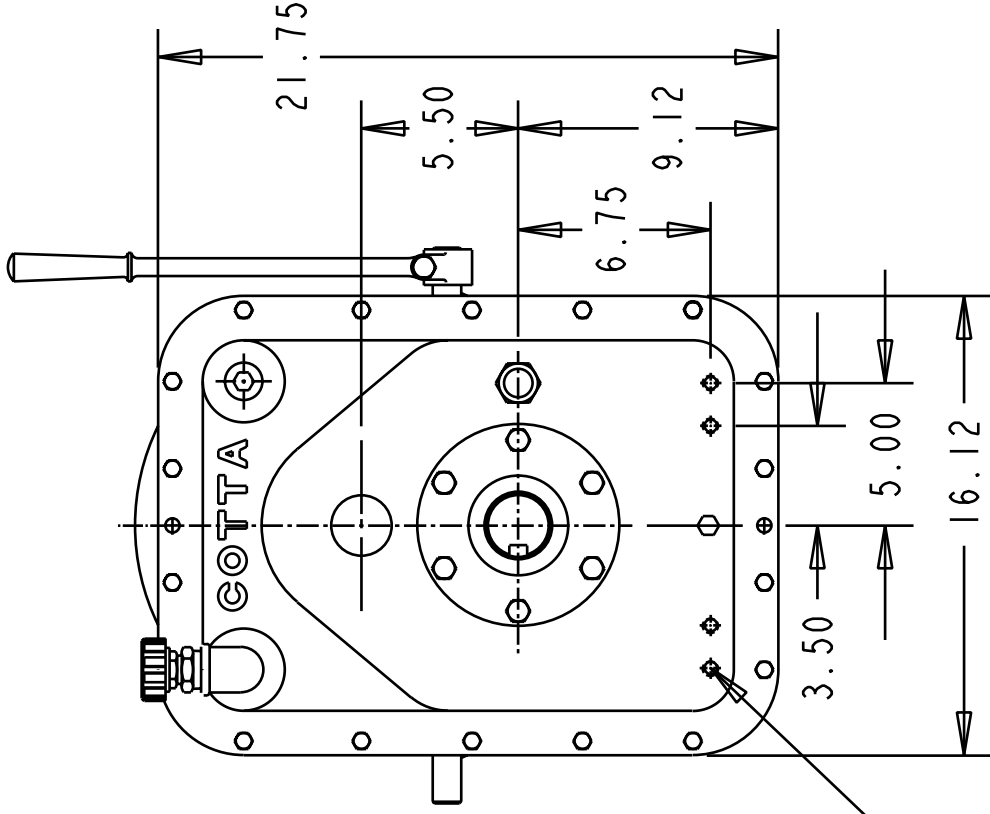
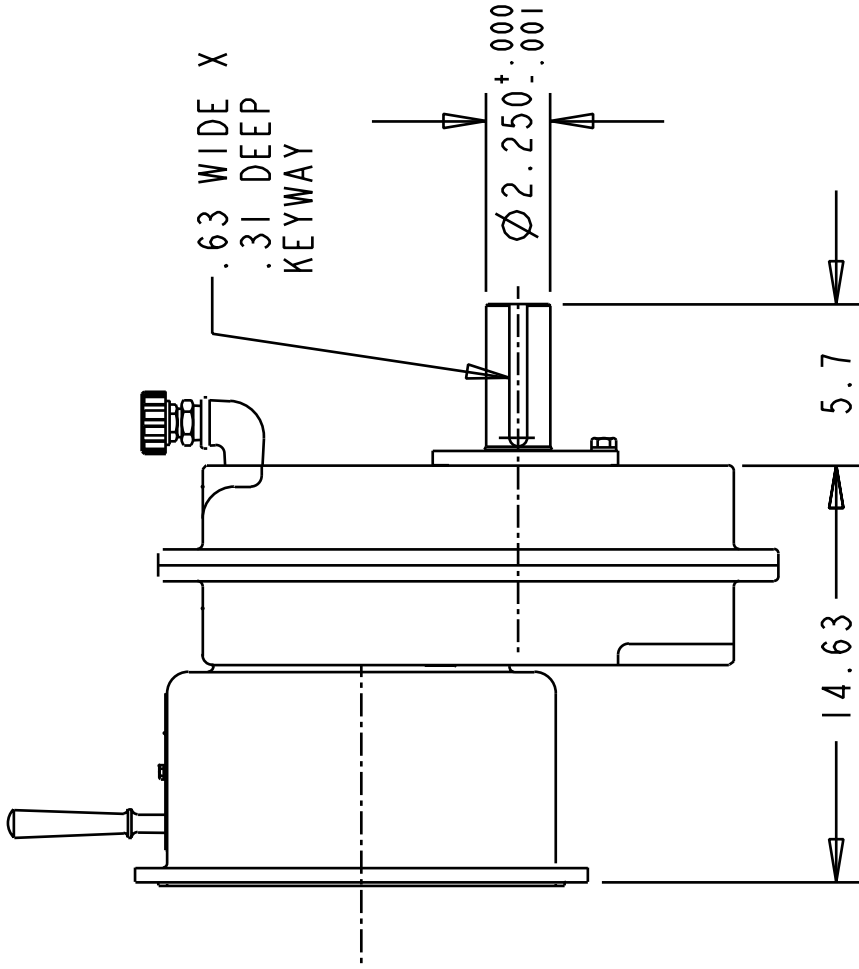
* Flywheel coupling selection requires Cotta technical review and approval.

** Some speed reducers output shafts are suitable for chain or belt side pull drives while others are not. Provide complete application details to Cotta for recommendations and approval.

*** Weight listed is an average. Actual weight can vary substantially with options such as SAE housing size and flywheel coupling choices.



This drawing shows general arrangement and approximate space claim. Do not design or lay out using this drawing. Use only certified drawings provided by Cotta Engineering.



1/2-13 UNC THREAD
TYP (4)
FOR GEARBOX MOUNTING

AR2053A DRAWING



MODEL AR2053E

SPEED REDUCER

Product Description

Model AR2053E is a single-stage reduction gearbox designed for direct mounting to industrial engines via an SAE flange and driven in standard engine rotation (CW facing input shaft). This unit incorporates an idler shaft to provide output rotation same as input. Tabulated below are nominal power and speed capacity together with standard options. Contact Cotta to discuss other options or specialized requirements.

OUTPUT ROTATION:	Same as input
MAX INPUT TORQUE:	350 lb-ft.
MAX INPUT SPEED:	3000 rpm unless otherwise limited by input clutch or coupling.
RATIOS:	1.16 to 3.71. 4.0 by special order
OUTPUT SHAFT SIZE:	2.25" dia., X 5" long. 5/8" X 5/16" keyway
OUTPUT SHAFT LOCATION:	6 o'clock std, 12, 3, and 9 o'clock optional
SAE HOUSINGS:	#2, #3, #4
*FLYWHEEL COUPLINGS:	Various clutches and couplings through SAE 11".
REAR SUPPORT:	Required. Customer supplied item. Mounting holes provided per dwg.
LUBRICATION:	Splash standard, pump optional.
COOLING:	Oil/water shell-and-tube cooler furnished if required. Various options.
**SIDE LOAD CAPABLE:	No. Contact Cotta for recommendations.
***APPROXIMATE WEIGHT:	415 lbs.

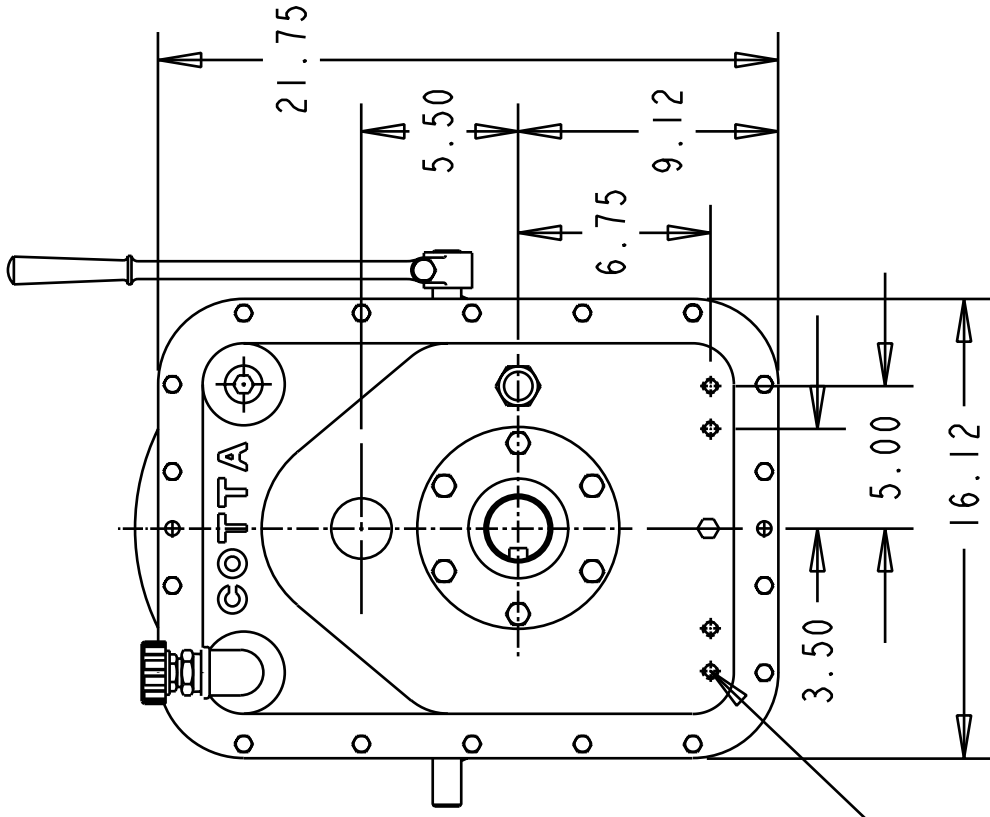
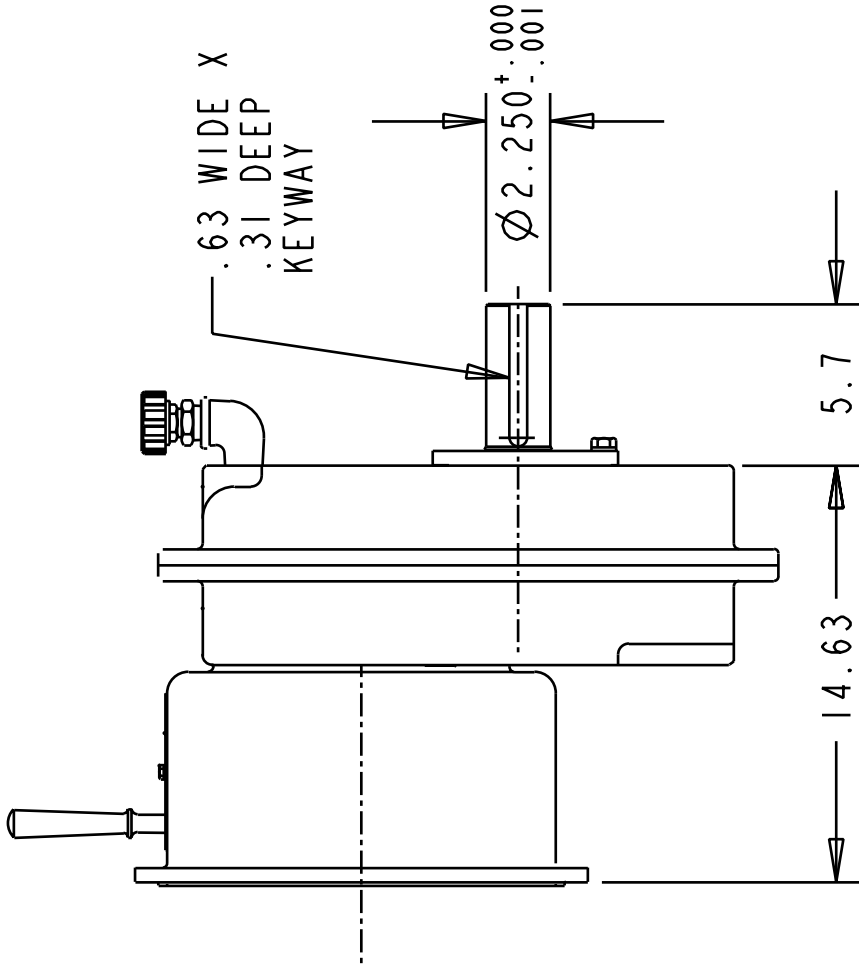
* Flywheel coupling selection requires Cotta technical review and approval.

** Some speed reducers output shafts are suitable for chain or belt side pull drives while others are not. Provide complete application details to Cotta for recommendations and approval.

*** Weight listed is an average. Actual weight can vary substantially with options such as SAE housing size and flywheel coupling choices.



This drawing shows general arrangement and approximate space claim. Do not design or lay out using this drawing. Use only certified drawings provided by Cotta Engineering



1/2-13 UNC THREAD
TYP (4)
FOR GEARBOX MOUNTING

AR2053E DRAWING



MODEL SR700A

SPEED REDUCER

Product Description

Model SR700A is a single-stage reduction gearbox designed for direct mounting to industrial engines via an SAE flange and driven in standard engine rotation (CW facing input shaft). Tabulated below are nominal power and speed capacity together with standard options. Contact Cotta to discuss other options or specialized requirements.

OUTPUT ROTATION:	Opposite to input.
MAX INPUT TORQUE:	650 lb-ft.
MAX INPUT SPEED:	2500 RPM or as otherwise limited by input clutch or coupling.
RATIO RANGE:	1.5 to 2.0
OUTPUT SHAFT SIZE:	3" dia., 5.5" long, 3/8" X 3/4" keyway.
OUTPUT SHAFT LOCATION:	6 o'clock
SAE HOUSINGS:	#1, no optional sizes.
*FLYWHEEL COUPLINGS:	Various clutches, couplings, and drive plates through SAE 14".
REAR SUPPORT:	Required. Customer supplied item. Mounting holes provided per drawing.
LUBRICATION:	Splash. Pump optional if required.
COOLING:	Oil/water shell-and-tube cooler furnished if required.
**SIDE LOAD CAPABLE:	Yes. Contact Cotta for specs and limits.
***APPROXIMATE WEIGHT:	510 lbs.

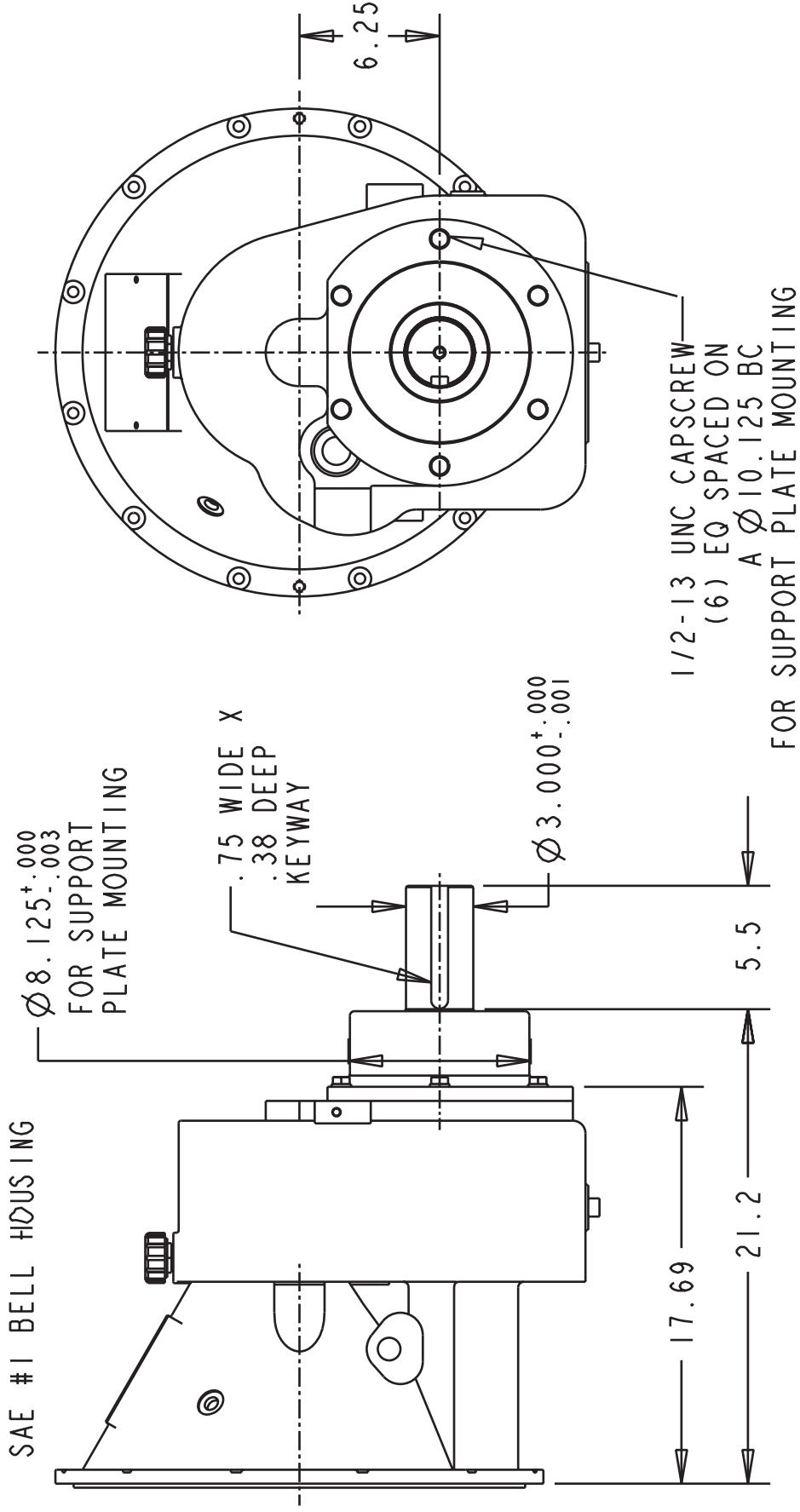
* Flywheel coupling selection requires Cotta technical review and approval.

** Some speed reducers output shafts are suitable for chain or belt side pull drives while others are not. Provide complete application details to Cotta for recommendations and approval.

*** Weight listed is an average. Actual weight can vary substantially with options such as SAE housing size and flywheel coupling choices.



This drawing shows general arrangement and approximate space claim. Do not design or lay out using this drawing. Use only certified drawings provided by Cotta Engineering.



SR700A DRAWING

Product Description

Model SR700E is a single-stage reduction gearbox designed for direct mounting to industrial engines via an SAE flange and driven in standard engine rotation (CW facing input shaft). This unit incorporates an idler shaft to provide output rotation same as input. Tabulated below are nominal power and speed capacity together with standard options. Contact Cotta to discuss other options or specialized requirements.

OUTPUT ROTATION:	Same as input.
MAX INPUT TORQUE:	650 lb-ft.
MAX INPUT SPEED:	2500 RPM or as otherwise limited by input clutch or coupling.
RATIO RANGE:	1.43 to 1.95
OUTPUT SHAFT SIZE:	3" dia., 5.5" long, 3/8" X 3/4" keyway.
OUTPUT SHAFT LOCATION:	6 o'clock
SAE HOUSINGS:	#1, no optional sizes.
*FLYWHEEL COUPLINGS:	Various clutches, couplings, and drive plates through SAE 14".
REAR SUPPORT:	Required. Customer supplied item. Mounting holes provided per drawing.
LUBRICATION:	Splash. Pump optional if required.
COOLING:	Oil/water shell-and-tube cooler furnished if required.
**SIDE LOAD CAPABLE:	Yes. Contact Cotta for specs and limits.
***APPROXIMATE WEIGHT:	510 lbs.

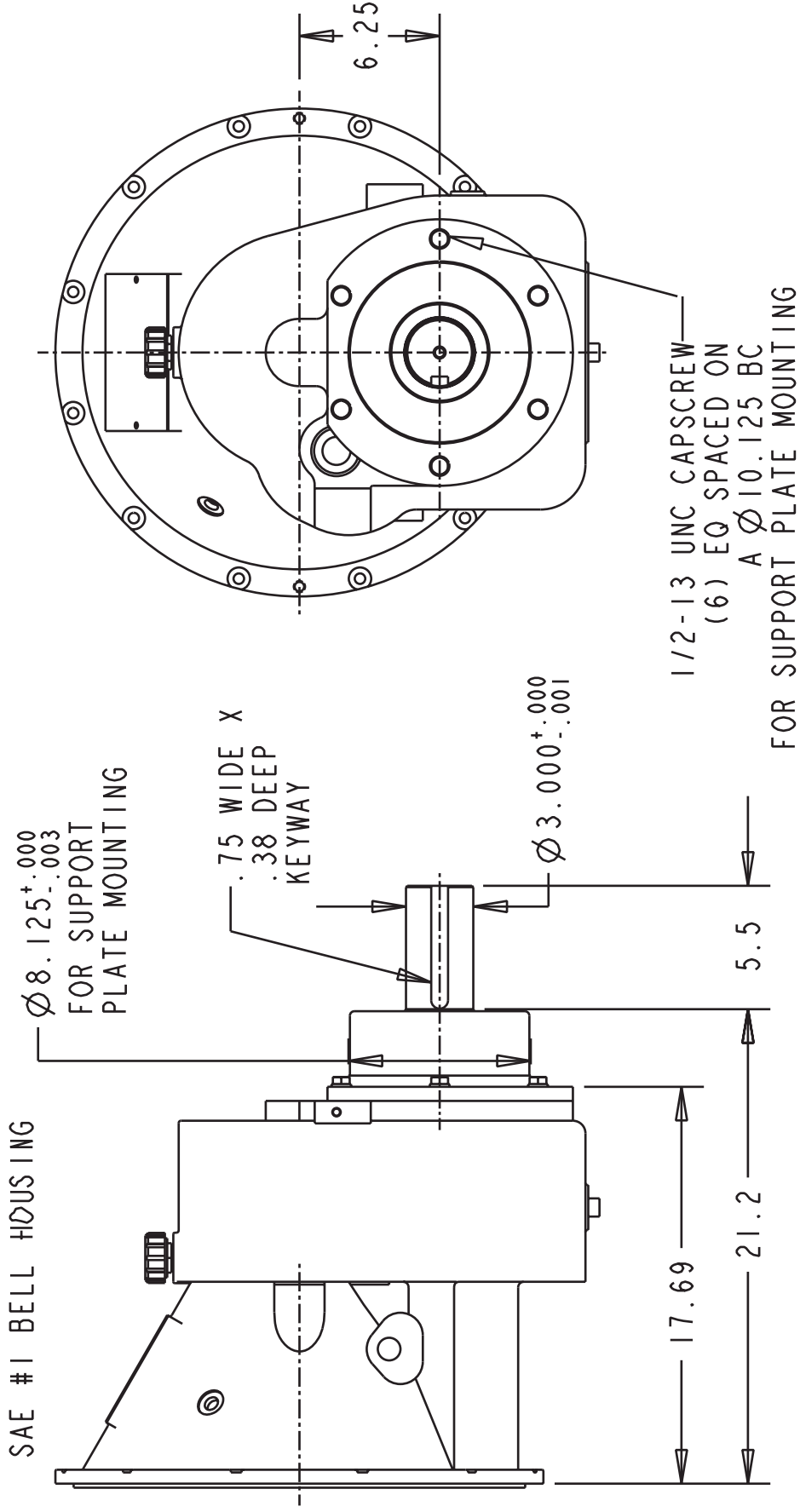
* Flywheel coupling selection requires Cotta technical review and approval.

** Some speed reducers output shafts are suitable for chain or belt side pull drives while others are not. Provide complete application details to Cotta for recommendations and approval.

*** Weight listed is an average. Actual weight can vary substantially with options such as SAE housing size and flywheel coupling choices.



This drawing shows general arrangement and approximate space claim. Do not design or lay out using this drawing. Use only certified drawings provided by Cotta Engineering.



SR700E DRAWING



MODEL SR2A SPEED REDUCER

Product Description

Model SR2A is a single-stage reduction gearbox designed for direct mounting to industrial engines via an SAE flange and driven in standard engine rotation (CW facing input shaft). Tabulated below are nominal power and speed capacity together with standard options. Contact Cotta to discuss other options or specialized requirements.

OUTPUT ROTATION:	Opposite input
MAX INPUT TORQUE:	800 lb-ft.
MAX INPUT SPEED:	3000 rpm or as otherwise limited by input clutch or coupling
RATIOS:	1:1 to 3:1 Others by special design
OUTPUT SHAFT SIZE:	3" dia., 5.5"long, 3/8" X 3/4" keyway
OUTPUT SHAFT LOCATION:	6 o'clock std., 12, 3, and 9 o'clock optional
SAE HOUSINGS:	#1, #2, #3
*FLYWHEEL COUPLINGS:	Various clutches, couplings, and drive plates through SAE 14 inch.
REAR SUPPORT:	Required, customer supplied item. Mounting holes provided per drawing.
LUBRICATION:	Integral Lube pump supplied
COOLING:	Oil/water shell-and-tube cooler furnished if required. Various options.
**SIDE LOAD CAPABLE:	No. Contact Cotta for recommendations.
***APPROXIMATE WEIGHT:	775 lbs.

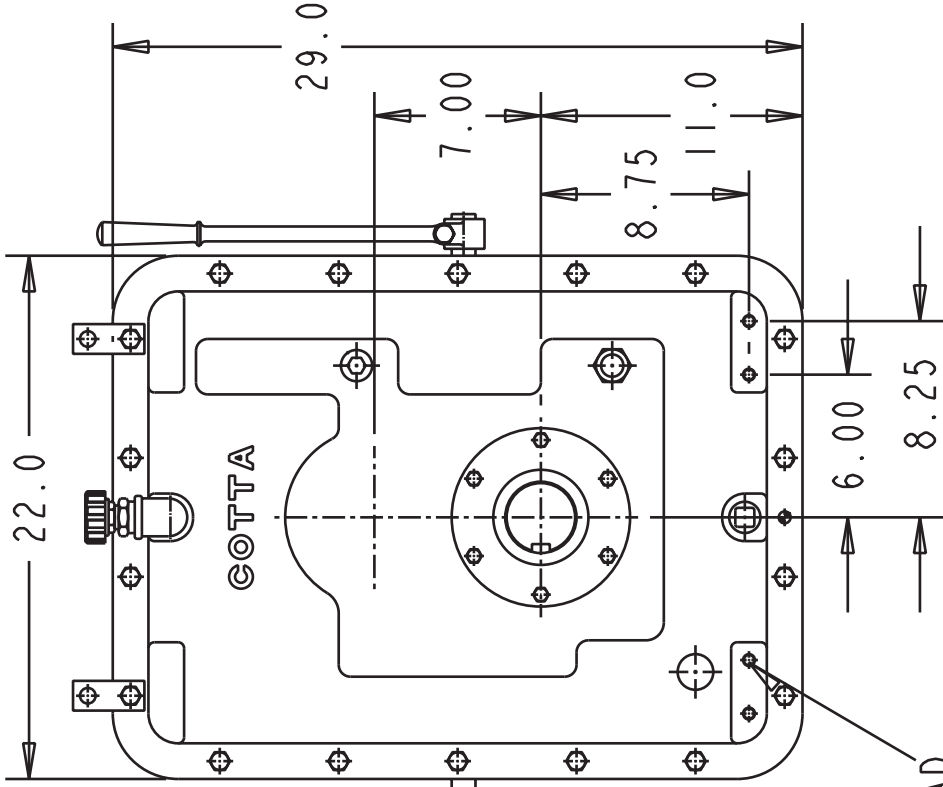
* Flywheel coupling selection requires Cotta technical review and approval.

** Some speed reducers output shafts are suitable for chain or belt side pull drives while others are not. Provide complete application details to Cotta for recommendations and approval.

*** Weight listed is an average. Actual weight can vary substantially with options such as SAE housing size and flywheel coupling choices.

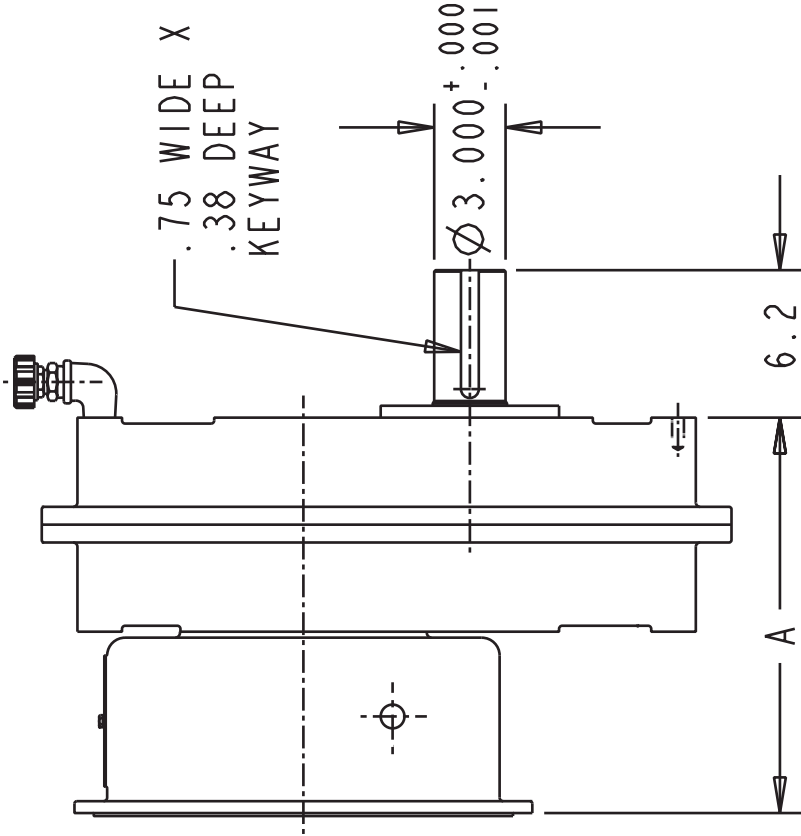


This drawing shows general arrangement and approximate space claim. Do not design or lay out using this drawing. Use only certified drawings provided by Cotta Engineering



.75 WIDE X
.38 DEEP
KEYWAY

$\varnothing 3.000^{+.000}_{-.001}$



1/2-13 UNC THREAD
TYP (4)
FOR GEARBOX MOUNTING

BELLHSG	DIM A
SAE #3	16.63
SAE #2	16.63
SAE #1	18.50

SR2A DRAWING

Product Description

Model SR2E is a single-stage reduction gearbox designed for direct mounting to industrial engines via an SAE flange and driven in standard engine rotation (CW facing input shaft). This unit incorporates an idler shaft to provide output rotation same as input. Tabulated below are nominal power and speed capacity together with standard options. Contact Cotta to discuss other options or specialized requirements.

OUTPUT ROTATION:	Same as input.
MAX INPUT TORQUE:	600 lb-ft.
MAX INPUT SPEED:	3000 RPM or as otherwise limited by input clutch or coupling.
RATIOS:	1.42 TO 3.0. Others by special design.
OUTPUT SHAFT SIZE:	3" dia., 5.5" long, 3/4" X 3/8" keyway
OUTPUT SHAFT LOCATION:	6 o'clock std, 12, 3, and 9 o'clock optional
SAE HOUSINGS:	#1, #2, #3
*FLYWHEEL COUPLINGS:	Various clutches, couplings, and drive plates through SAE 14 inch.
REAR SUPPORT:	Required, customer supplied item. Mounting holes provided per drawing.
LUBRICATION:	Integral Lube pump supplied.
COOLING:	Oil/water shell-and-tube cooler furnished if required. Various options.
**SIDE LOAD CAPABLE:	No. Contact Cotta for recommendations.
***APPROXIMATE WEIGHT:	800 lbs.

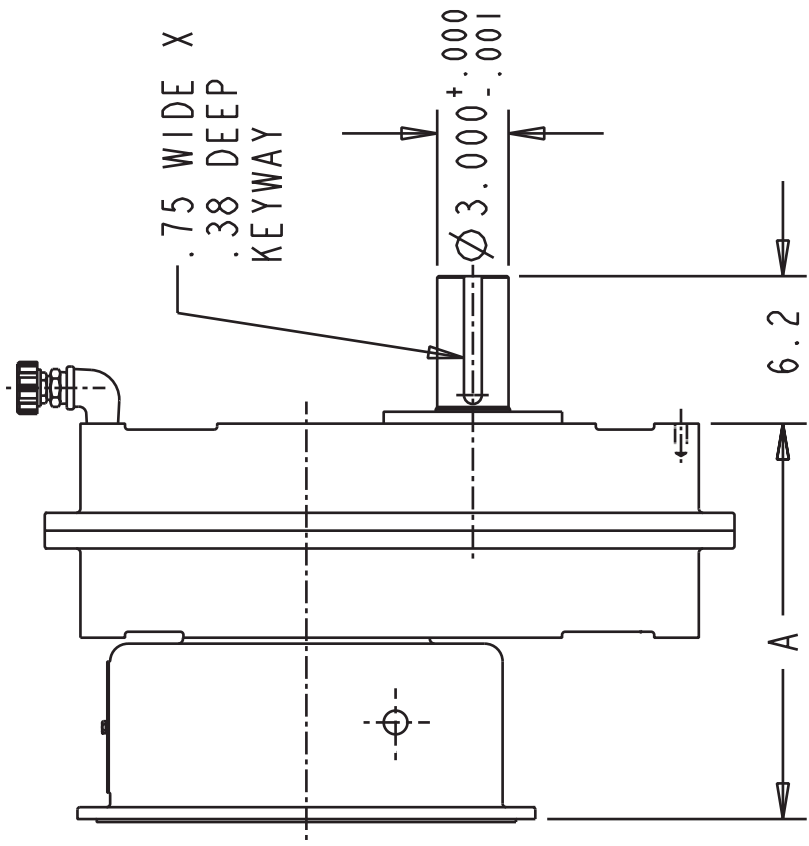
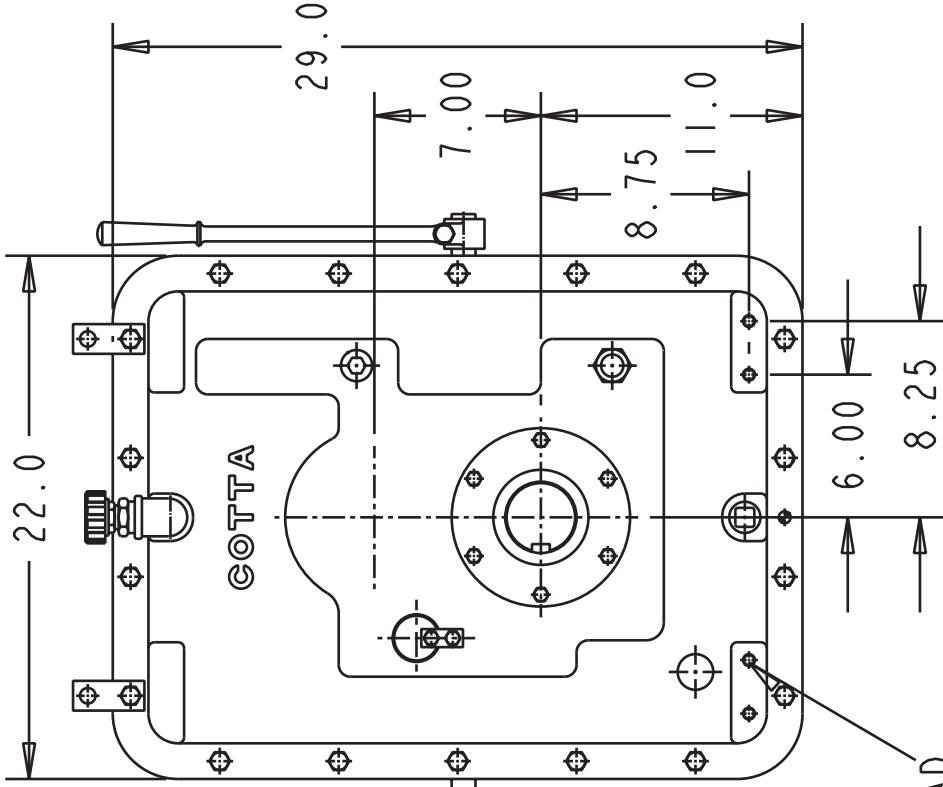
* Flywheel coupling selection requires Cotta technical review and approval.

** Some speed reducers output shafts are suitable for chain or belt side pull drives while others are not. Provide complete application details to Cotta for recommendations and approval.

*** Weight listed is an average. Actual weight can vary substantially with options such as SAE housing size and flywheel coupling choices.



This drawing shows general arrangement and approximate space claim. Do not design or lay out using this drawing. Use only certified drawings provided by Cotta Engineering



.75 WIDE X
.38 DEEP
KEYWAY

$\varnothing 3.000^{+.000}_{-.001}$

6.2

1/2-13 UNC THREAD
TYP (4)
FOR GEARBOX MOUNTING

BELLHSG	DIM A
SAE #3	16.63
SAE #2	16.63
SAE #1	18.50

SR2E DRAWING



MODEL SR3A SPEED REDUCER

Product Description

Model SR3A is a single-stage reduction gearbox designed for direct mounting to industrial engines via an SAE flange and driven in standard engine rotation (CW facing input shaft). Tabulated below are nominal power and speed capacity together with standard options. Contact Cotta to discuss other options or specialized requirements.

OUTPUT ROTATION:	Opposite to input.
MAX INPUT TORQUE:	1400 lb-ft.
MAX INPUT SPEED:	3000 RPM or as otherwise limited by input clutch or coupling.
RATIOS:	1.02 to 3.04. Others by special design.
OUTPUT SHAFT SIZE:	3.5" dia., 5" long, 7/8" X 7/16" keyway
OUTPUT SHAFT LOCATION:	6 o'clock std, 12, 3, and 9 o'clock optional
SAE HOUSINGS:	#0, #1, #2
*FLYWHEEL COUPLINGS:	Various clutches, couplings, and drive plates through SAE 18 inch.
REAR SUPPORT:	Required. Customer supplied item. Mounting holes provided per drawing.
LUBRICATION:	Integral Lube pump supplied
COOLING:	Oil/water shell-and-tube cooler supplied if required. Various options.
**SIDE LOAD CAPABLE:	No. Contact Cotta for recommendations.
***APPROXIMATE WEIGHT:	940 lbs.

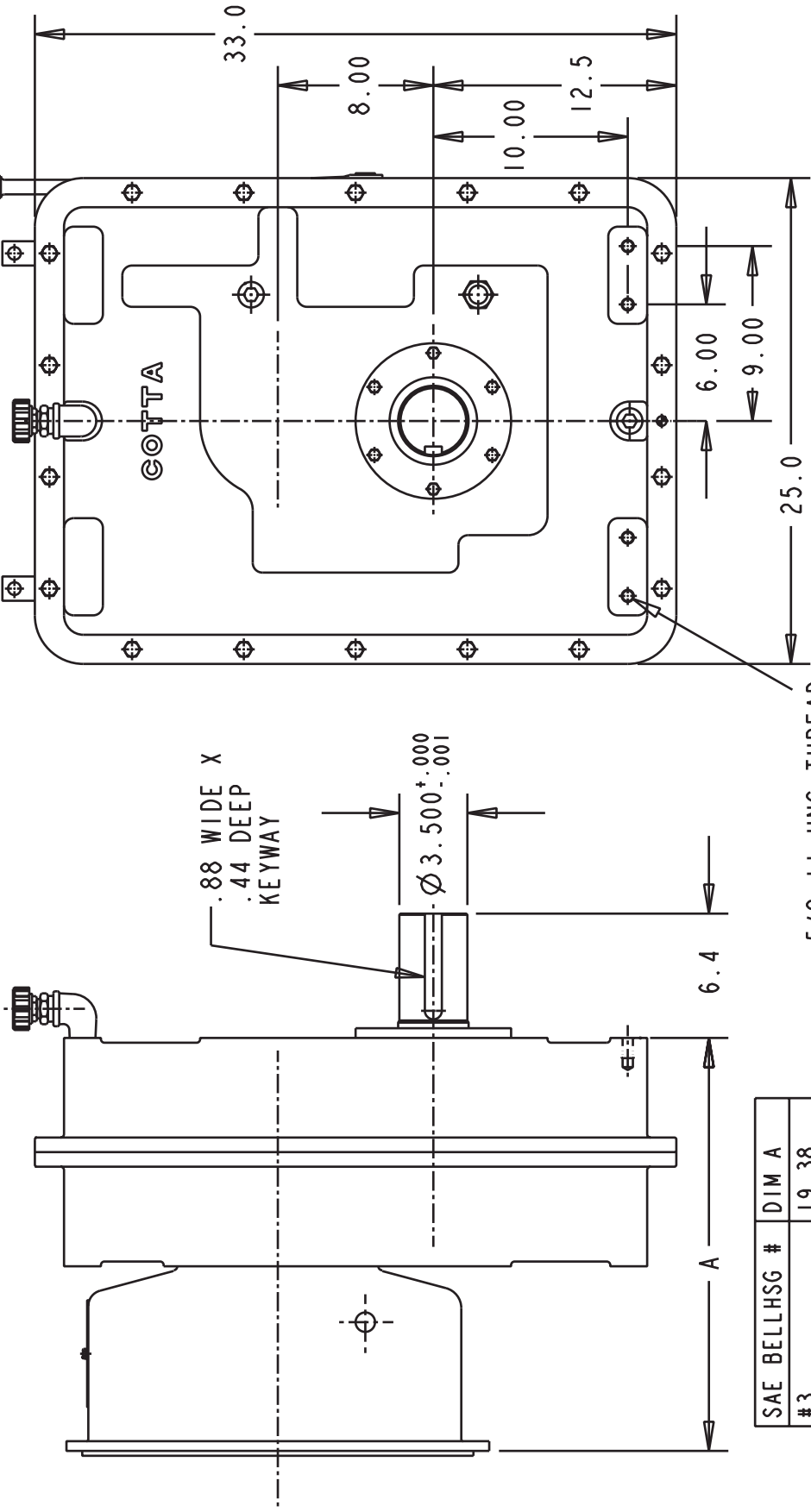
* Flywheel coupling selection requires Cotta technical review and approval.

** Some speed reducers output shafts are suitable for chain or belt side pull drives while others are not. Provide complete application details to Cotta for recommendations and approval.

*** Weight listed is an average. Actual weight can vary substantially with options such as SAE housing size and flywheel coupling choices.



This drawing shows general arrangement and approximate space claim. Do not design or lay out using this drawing. Use only certified drawings provided by Cotta Engineering.



SAE BELLHSG #	DIM A
#3	19.38
#2	19.38
#1	21.25
#1 (DEEP)	22.75

5/8-11 UNC THREAD
TYP (4)
FOR GEARBOX MOUNTING

SR3A DRAWING

Product Description

Model SR3E is a single-stage reduction gearbox designed for direct mounting to industrial engines via an SAE flange and driven in standard engine rotation (CW facing input shaft). This unit incorporates an idler shaft to provide output rotation same as input. Tabulated below are nominal power and speed capacity together with standard options. Contact Cotta to discuss other options or specialized requirements.

OUTPUT ROTATION:	Same as input.
MAX INPUT TORQUE:	900 lb-ft.
MAX INPUT SPEED:	3000 RPM or as otherwise limited by input clutch or coupling.
RATIOS:	1.2 to 3.0
OUTPUT SHAFT SIZE:	3.5" dia., 5" long, 7/8" X 7/16" keyway
OUTPUT SHAFT LOCATION:	6 o'clock std, 12, 3, and 9 o'clock optional.
SAE HOUSINGS:	#0, #1, #2
*FLYWHEEL COUPLINGS:	Various clutches, couplings, and drive plates through SAE 18".
REAR SUPPORT:	Required. Customer supplied item. Mounting holes provided per drawing.
LUBRICATION:	Integral Lube pump supplied.
COOLING:	Oil/water shell-and-tube cooler supplied if required. Various options.
**SIDE LOAD CAPABLE:	No. Contact Cotta for recommendations.
***APPROXIMATE WEIGHT:	975 lbs.

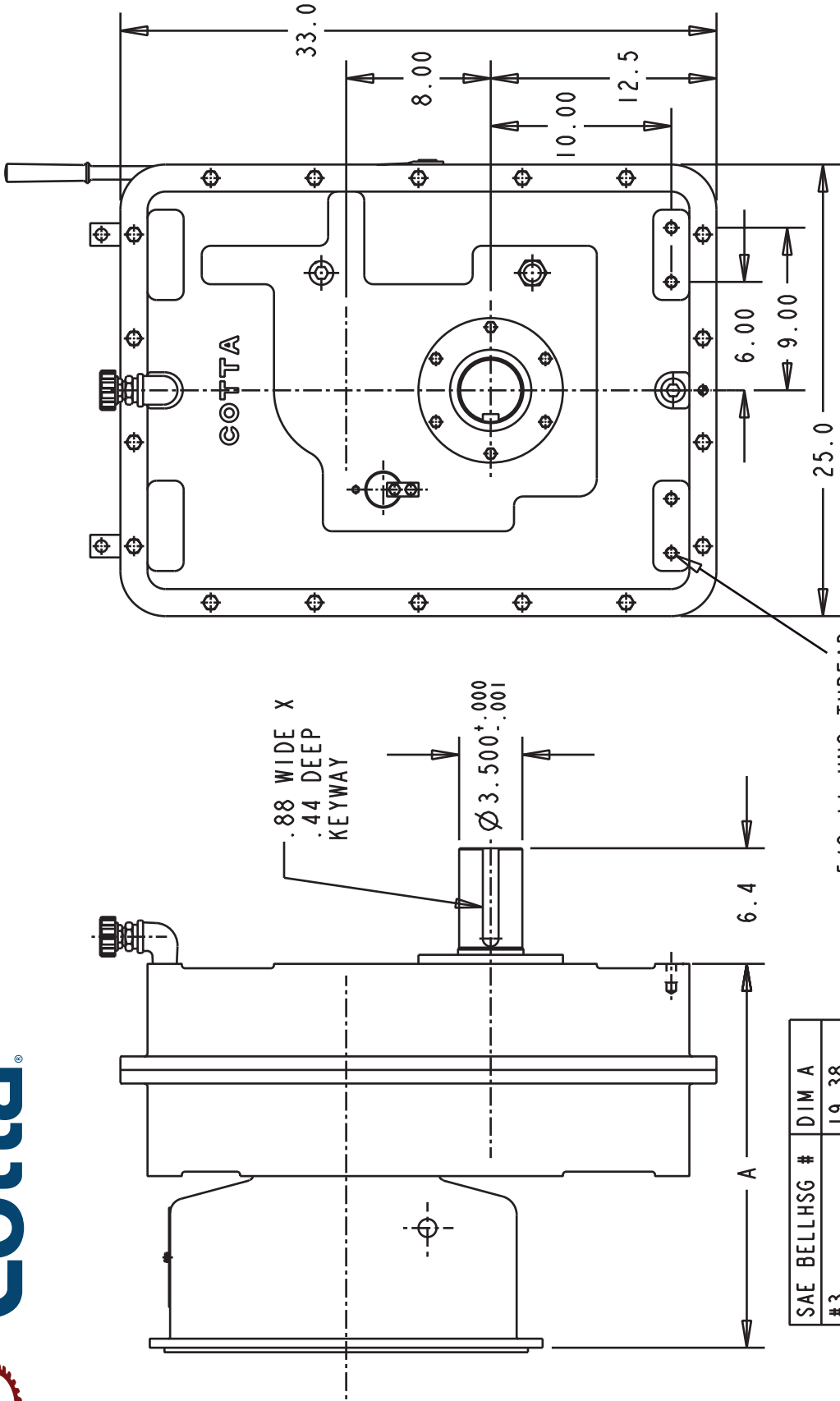
* Flywheel coupling selection requires Cotta technical review and approval.

** Some speed reducers output shafts are suitable for chain or belt side pull drives while others are not. Provide complete application details to Cotta for recommendations and approval.

*** Weight listed is an average. Actual weight can vary substantially with options such as SAE housing size and flywheel coupling choices.



This drawing shows general arrangement and approximate space claim. Do not design or lay out using this drawing. Use only certified drawings provided by Cotta Engineering.



.88 WIDE X
.44 DEEP
KEYWAY

$\varnothing 3.500^{+.000}$

6.4

SAE BELLHSG #	DIM A
#3	19.38
#2	19.38
#1	21.25
#1 (DEEP)	22.75

5/8-11 UNC THREAD
TYP (4)
FOR GEARBOX MOUNTING

SR3E DRAWING



MODEL GR15A

SPEED REDUCER

Product Description

Model GR15A is a single-stage reduction gearbox designed for direct mounting to industrial engines via an SAE flange and driven in standard engine rotation (CW facing input shaft). Tabulated below are nominal power and speed capacity together with standard options. Contact Cotta to discuss other options or specialized requirements.

OUTPUT ROTATION:	Opposite to input.
MAX INPUT TORQUE:	1450 lb-ft.
MAX INPUT SPEED:	2350 RPM or as otherwise limited by input clutch or coupling.
RATIO RANGE:	1.08 TO 2.46
OUTPUT SHAFT SIZE:	4" dia., 9" long, 1" x 1/2" keyway
OUTPUT SHAFT LOCATION:	6 o'clock std, 12, 3, and 9 o'clock optional.
SAE HOUSINGS:	#00, #0, #1
*FLYWHEEL COUPLINGS:	Various clutches, couplings, and drive plates through SAE 24".
REAR SUPPORT:	Integral foot mounts provided.
LUBRICATION:	Integral Lube pump supplied.
COOLING:	Oil/water shell-and-tube cooler furnished if required. Various options.
**SIDE LOAD CAPABLE:	Yes. Contact Cotta for specs and limits.
***APPROXIMATE WEIGHT:	1200 lbs.

* Flywheel coupling selection requires Cotta technical review and approval.

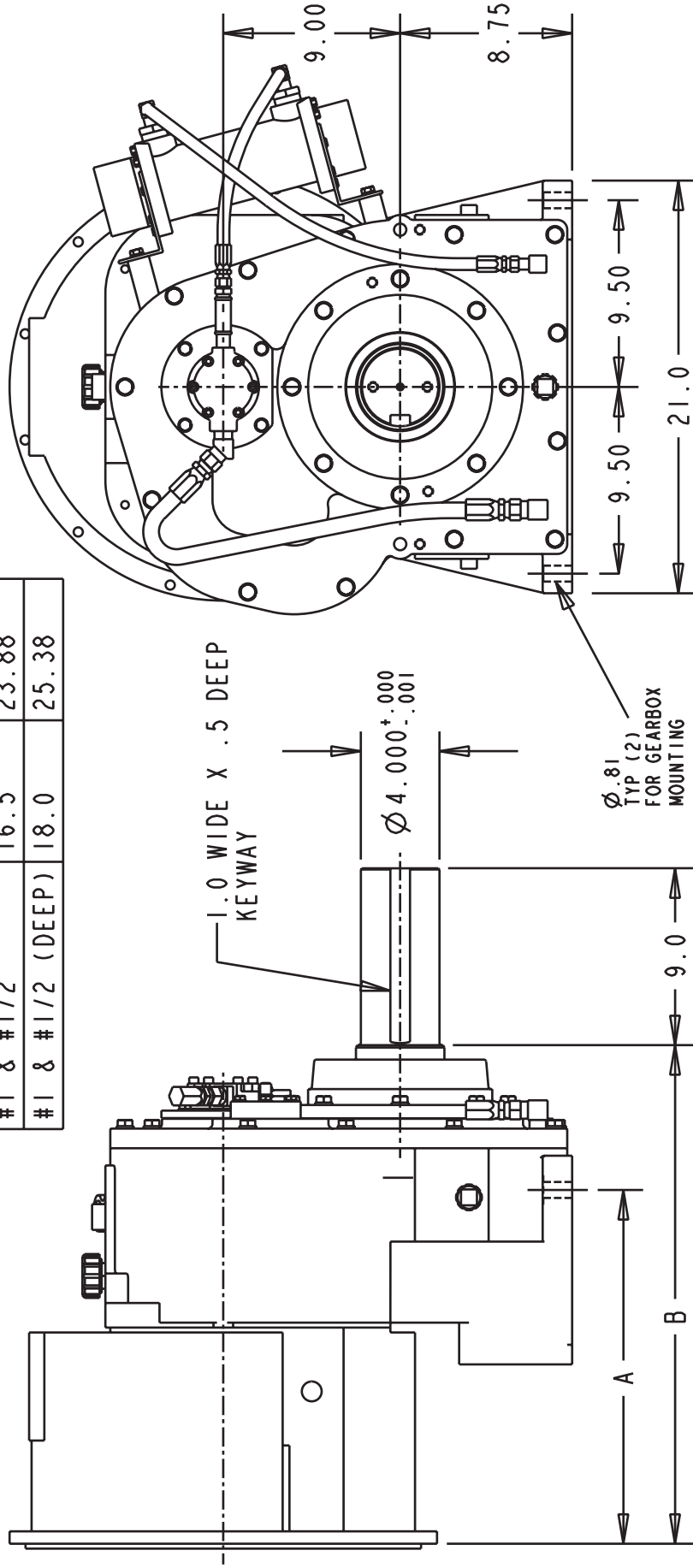
** Some speed reducers output shafts are suitable for chain or belt side pull drives while others are not. Provide complete application details to Cotta for recommendations and approval.

*** Weight listed is an average. Actual weight can vary substantially with options such as SAE housing size and flywheel coupling choices.



This drawing shows general arrangement and approximate space claim. Do not design or lay out using this drawing. Use only certified drawings provided by Cotta Engineering.

BELLHSG SAE #	A	B
#0 & #00	19.25	26.63
#0 (DEEP)	21.5	28.88
#1 & #1/2	16.5	23.88
#1 & #1/2 (DEEP)	18.0	25.38



GR15A DRAWING



MODEL GR15E

SPEED REDUCER

Product Description

Model GR15E is a single-stage reduction gear designed for direct mount to an industrial engine by means of an SAE flange and driven in standard engine rotation (CW facing input shaft). This unit incorporates an idler shaft to provide output rotation same as input. Tabulated below are nominal power and speed capacity together with standard options. Contact Cotta to discuss other options or specialized requirements.

OUTPUT ROTATION:	Same as input
MAX INPUT TORQUE:	1450 lb-ft.
MAX INPUT SPEED:	2300 rpm or as otherwise limited by input coupling or clutch
RATIO RANGE:	1.28 to 2.43
OUTPUT SHAFT SIZE:	4" dia., 9" long, 1" X 1/2" keyway
OUTPUT SHAFT LOCATION:	6" o'clock std., 12, 3, and 9 o'clock by special design
SAE HOUSINGS:	#00, #0, #1/2, #1
*FLYWHEEL COUPLINGS:	Clutches, couplings, and drive plates up to SAE 24".
REAR SUPPORT:	Integral foot mounts provided.
LUBRICATION:	Integral lube pump supplied.
COOLING:	Oil/water shell-and-tube cooler furnished if required. Various options.
**SIDE LOAD CAPABLE:	Yes. Contact Cotta for specs and limits.
***APPROXIMATE WEIGHT:	1330 lbs.

* Flywheel coupling selection requires Cotta technical review and approval.

** Some speed reducers output shafts are suitable for chain or belt side pull drives while others are not. Provide complete application details to Cotta for recommendations and approval.

*** Weight listed is an average. Actual weight can vary substantially with options such as SAE housing size and flywheel coupling choices.

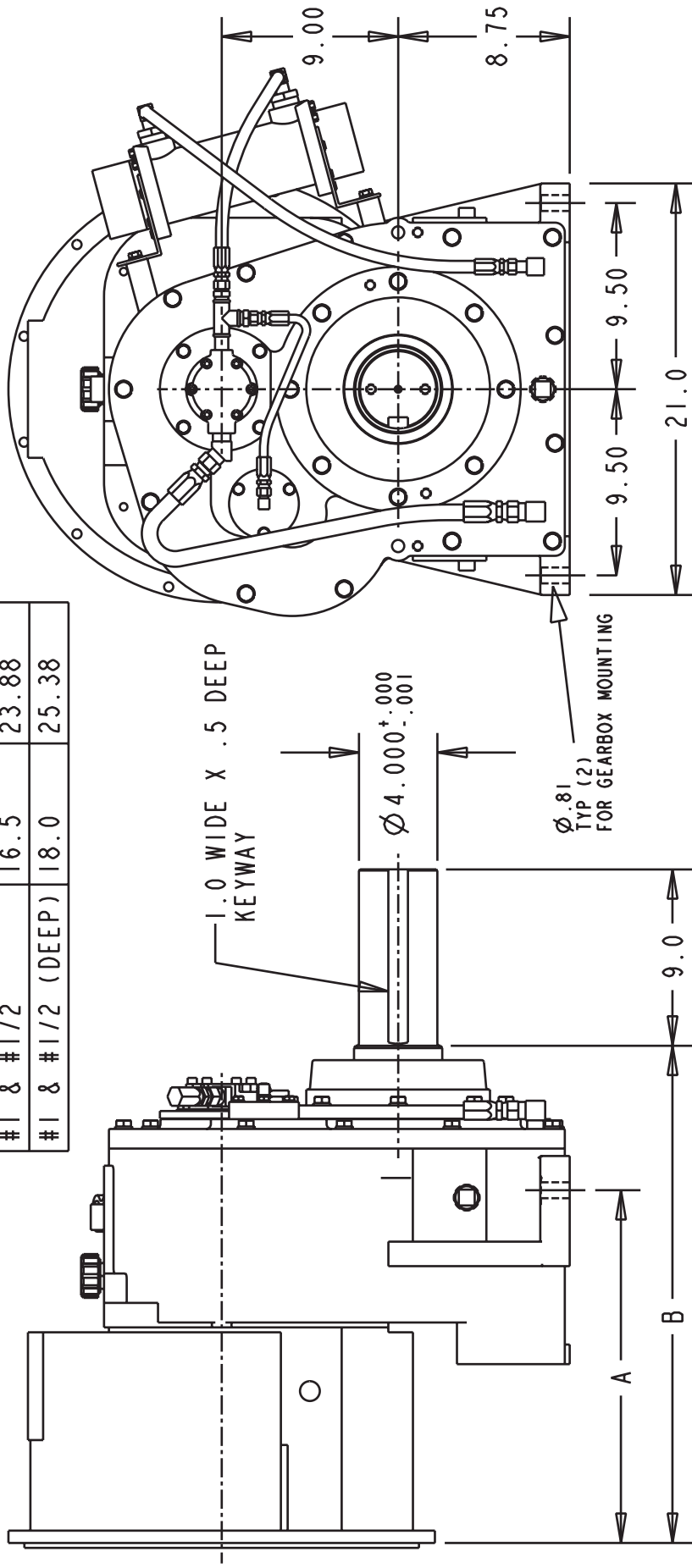
<<Prev TOC TAB Next>>

www.cotta.com • 608-368-5600 • sales@cotta.com



This drawing shows general arrangement and approximate space claim. Do not design or lay out using this drawing. Use only certified drawings provided by Cotta Engineering.

BELLHSG SAE #	A	B
#0 & #00	19.25	26.63
#0 (DEEP)	21.5	28.88
#1 & #1/2	16.5	23.88
#1 & #1/2 (DEEP)	18.0	25.38



GR15E DRAWING



MODEL GR16A

SPEED REDUCER

Product Description

Model GR16A is a single-stage reduction gearbox designed for direct mounting to industrial engines via an SAE flange and driven in standard engine rotation (CW facing input shaft). Tabulated below are nominal power and speed capacity together with standard options. Contact Cotta to discuss other options or specialized requirements.

OUTPUT ROTATION:	Opposite to input.
MAX INPUT TORQUE:	1650 lb-ft.
MAX INPUT SPEED:	2200 RPM or as otherwise limited by input clutch or coupling.
RATIO RANGE:	1.50 to 3.0
OUTPUT SHAFT SIZE:	4.000" dia., 9" long, 1" X 1/2" keyway.
OUTPUT SHAFT LOCATION:	6 o'clock std, 12, 3, and 9 o'clock optional
SAE HOUSINGS:	#00, #0, #1/2, #1
*FLYWHEEL COUPLINGS:	Various clutches, couplings, and drive plates through SAE 24".
REAR SUPPORT:	Integral foot mounts provided.
LUBRICATION:	Integral Lube pump supplied
COOLING:	Oil/water shell-and-tube cooler furnished if required. Various options.
**SIDE LOAD CAPABLE:	Yes. Contact Cotta for specs and limits.
***APPROXIMATE WEIGHT:	1400 lbs.

* Flywheel coupling selection requires Cotta technical review and approval.

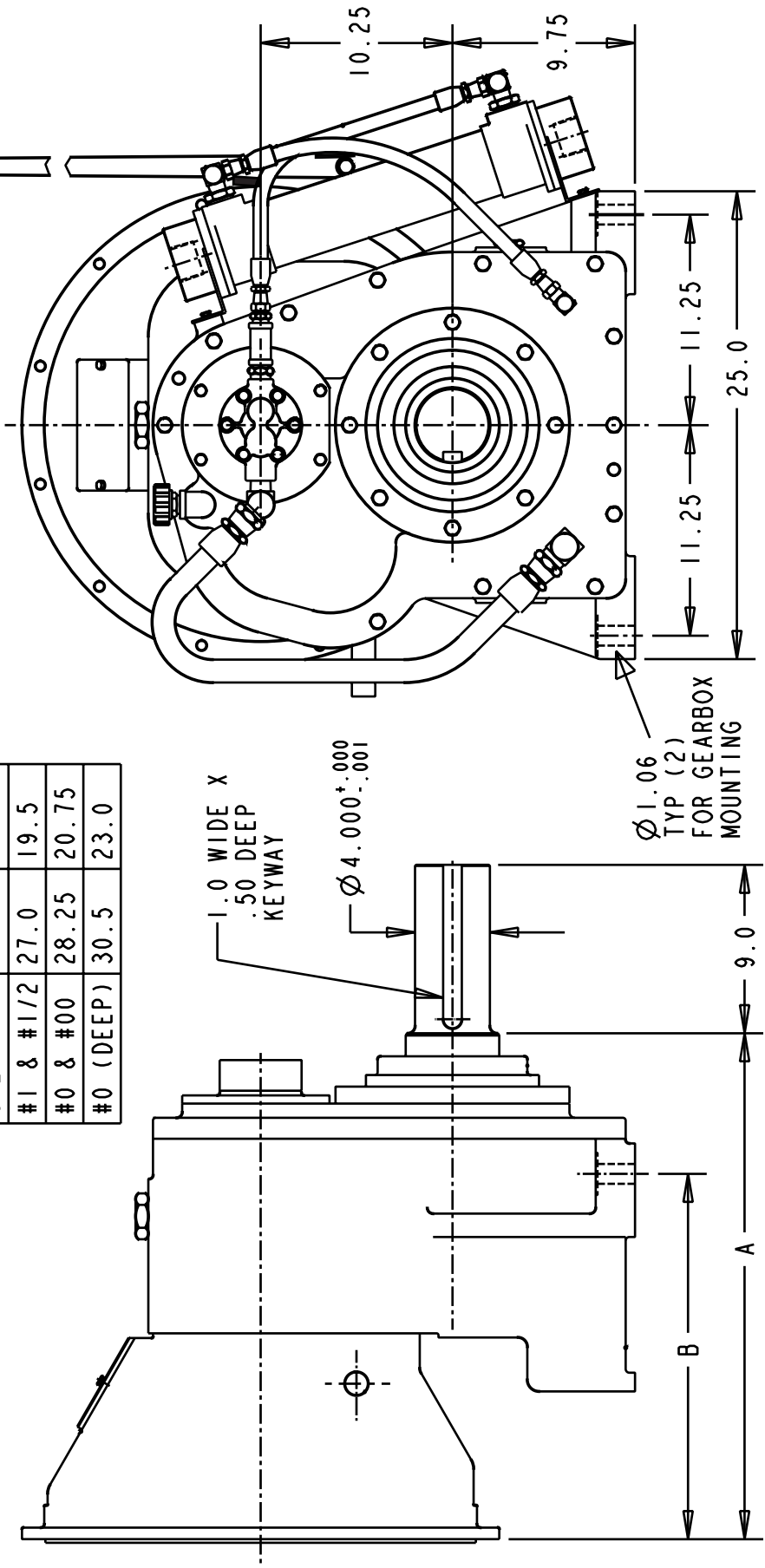
** Some speed reducers output shafts are suitable for chain or belt side pull drives while others are not. Provide complete application details to Cotta for recommendations and approval.

*** Weight listed is an average. Actual weight can vary substantially with options such as SAE housing size and flywheel coupling choices.



This drawing shows general arrangement and approximate space claim. Do not design or lay out using this drawing. Use only certified drawings provided by Cotta Engineering.

BELLHSG SAE#	DIM A	DIM B
#1 & #1/2	27.0	19.5
#0 & #00	28.25	20.75
#0 (DEEP)	30.5	23.0



GR16A DRAWING



MODEL GR16E

SPEED REDUCER

Product Description

Model GR16E is a single-stage reduction gearbox designed for direct mounting to industrial engines via an SAE flange and driven in standard engine rotation (CW facing input shaft). This unit incorporates an idler shaft to provide output rotation same as input. Tabulated below are nominal power and speed capacity together with standard options. Contact Cotta to discuss other options or specialized requirements.

OUTPUT ROTATION:	Same as input.
MAX INPUT TORQUE:	1650 lb-ft.
MAX INPUT SPEED:	2200 RPM or as otherwise limited by input clutch or coupling.
RATIO RANGE:	1.50 to 3.0
OUTPUT SHAFT SIZE:	4.000" dia., 9" long, 1" X 1/2" keyway.
OUTPUT SHAFT LOCATION:	6 o'clock std, 12, 3, and 9 o'clock optional
SAE HOUSINGS:	#00, #0, #1/2, #1
*FLYWHEEL COUPLINGS:	Various clutches, couplings, and drive plates through SAE 24".
REAR SUPPORT:	Integral foot mounts provided.
LUBRICATION:	Integral Lube pump supplied
COOLING:	Oil/water shell-and-tube cooler furnished if required. Various options.
**SIDE LOAD CAPABLE:	Yes. Contact Cotta for specs and limits.
***APPROXIMATE WEIGHT:	1500 lbs.

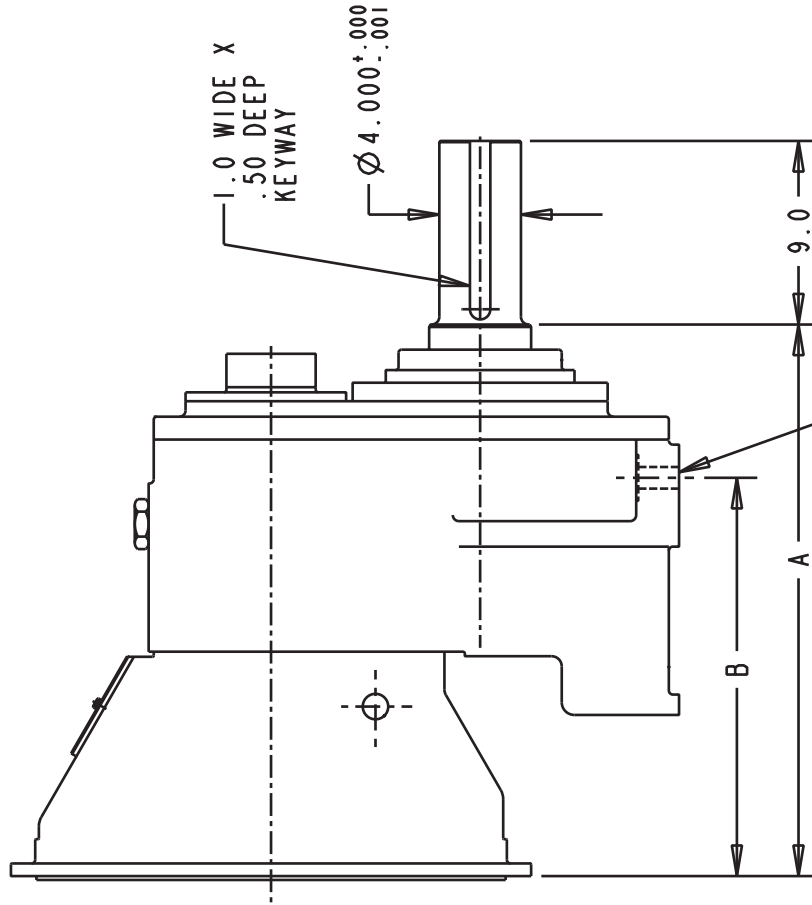
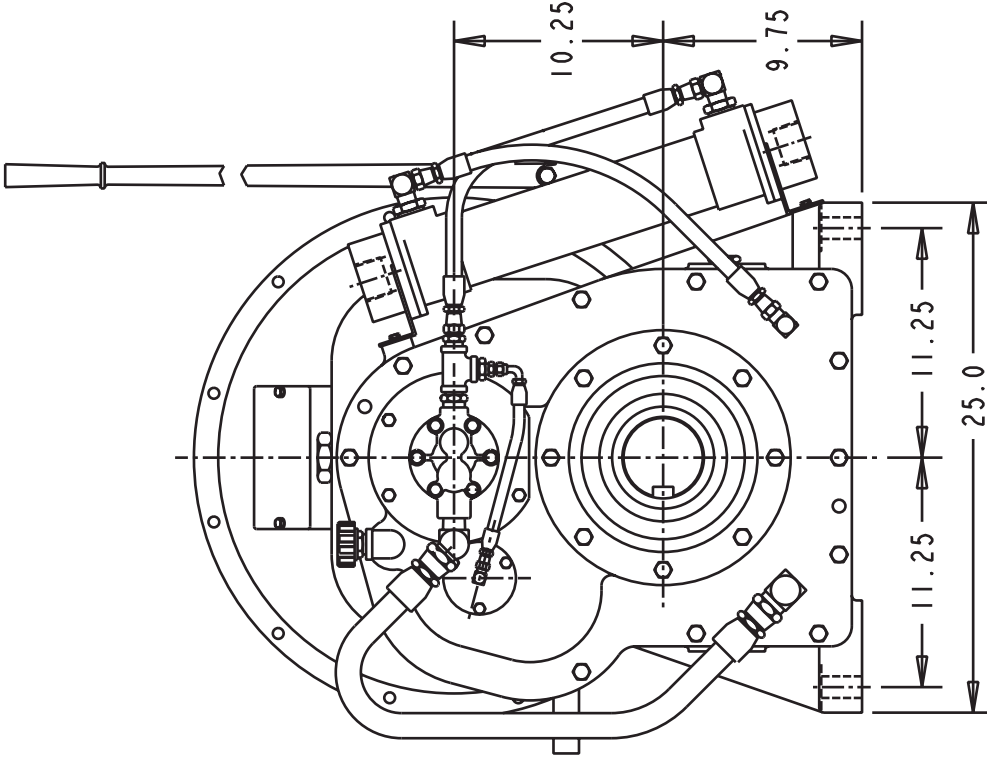
* Flywheel coupling selection requires Cotta technical review and approval.

** Some speed reducers output shafts are suitable for chain or belt side pull drives while others are not. Provide complete application details to Cotta for recommendations and approval.

*** Weight listed is an average. Actual weight can vary substantially with options such as SAE housing size and flywheel coupling choices.



This drawing shows general arrangement and approximate space claim. Do not design or lay out using this drawing. Use only certified drawings provided by Cotta Engineering.



BELLHSG SAE#	DIM A	DIM B
#1 & #1/2	27.0	19.5
#0 & #00	28.25	29.75
#0 (DEEP)	30.5	23.0

Ø 1.06
TYP (2)
FOR GEARBOX
MOUNTING

GR16E DRAWING



MODEL GR1600A

SPEED REDUCER

Product Description

Model GR1600A is a single-stage reduction gearbox designed for direct mounting to industrial engines via an SAE flange and driven in standard engine rotation (CW facing input shaft). Tabulated below are nominal power and speed capacity together with standard options. Contact Cotta to discuss other options or specialized requirements.

OUTPUT ROTATION:	Opposite to input.
MAX INPUT TORQUE:	3000 lb-ft.
MAX INPUT SPEED:	2200 RPM or as otherwise limited by input clutch or coupling.
RATIO RANGE:	1.35 to 3.07
OUTPUT SHAFT SIZE:	4.000" dia., 9" long, 1" X 1/2" keyway.
OUTPUT SHAFT LOCATION:	6 o'clock std, 12, 3, and 9 o'clock optional
SAE HOUSINGS:	#00, #0, #1/2, #1
*FLYWHEEL COUPLINGS:	Various clutches, couplings, and drive plates through SAE 24".
REAR SUPPORT:	Integral foot mounts provided.
LUBRICATION:	Integral Lube pump supplied
COOLING:	Oil/water shell-and-tube cooler furnished if required. Various options.
**SIDE LOAD CAPABLE:	Yes. Contact Cotta for specs and limits.
***APPROXIMATE WEIGHT:	1400 lbs.

* Flywheel coupling selection requires Cotta technical review and approval.

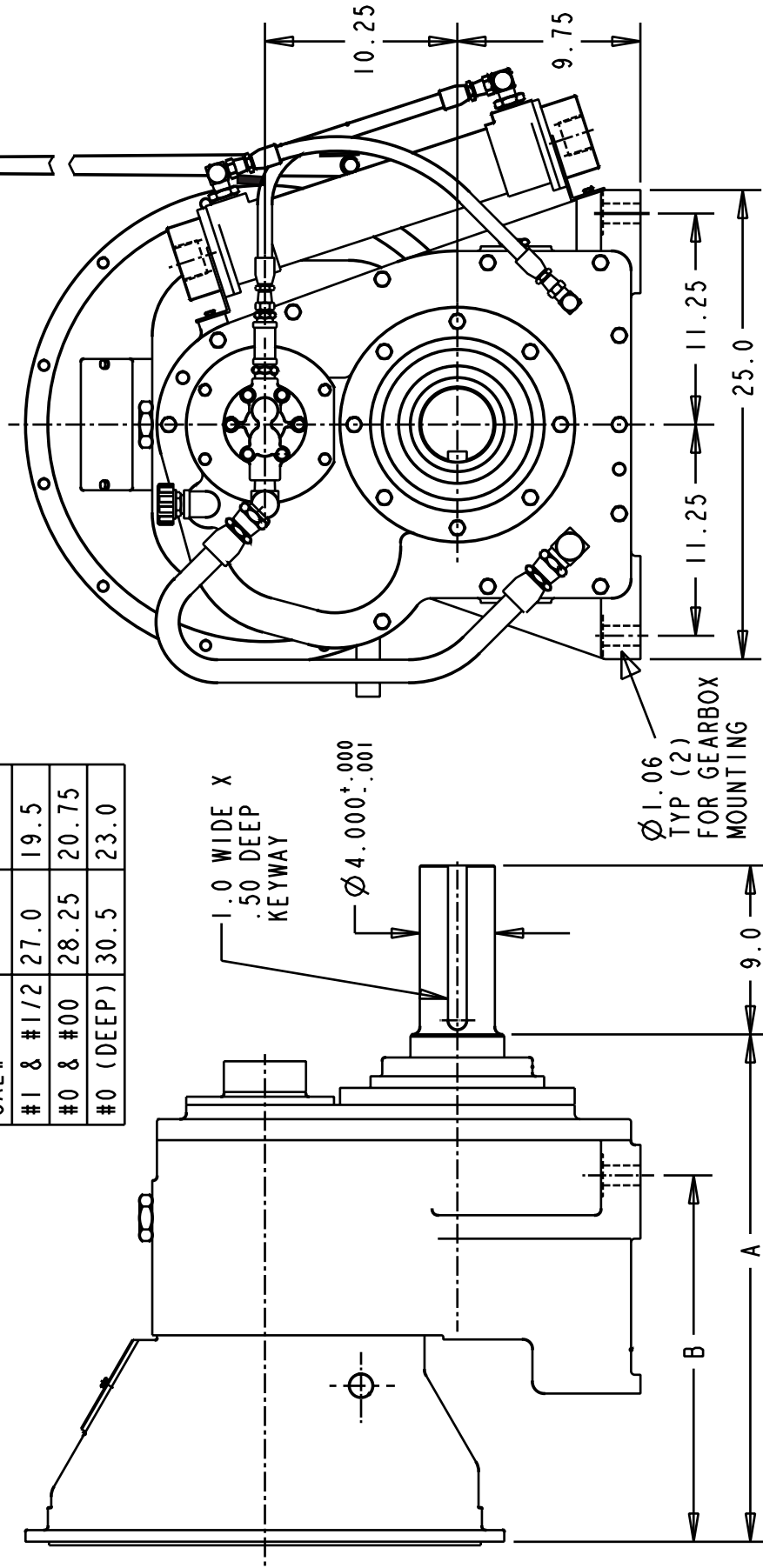
** Some speed reducers output shafts are suitable for chain or belt side pull drives while others are not. Provide complete application details to Cotta for recommendations and approval.

*** Weight listed is an average. Actual weight can vary substantially with options such as SAE housing size and flywheel coupling choices.



This drawing shows general arrangement and approximate space claim. Do not design or lay out using this drawing. Use only certified drawings provided by Cotta Engineering.

BELLHSG SAE#	DIM A	DIM B
#1 & #1/2	27.0	19.5
#0 & #00	28.25	20.75
#0 (DEEP)	30.5	23.0



GR1600A DRAWING



MODEL GR1600E

SPEED REDUCER

Product Description

Model GR1600E is a single-stage reduction gearbox designed for direct mounting to industrial engines via an SAE flange and driven in standard engine rotation (CW facing input shaft). This unit incorporates an idler shaft to provide output rotation same as input. Tabulated below are nominal power and speed capacity together with standard options. Contact Cotta to discuss other options or specialized requirements.

OUTPUT ROTATION:	Same as input.
MAX INPUT TORQUE:	2600 lb-ft.
MAX INPUT SPEED:	2200 RPM or as otherwise limited by input clutch or coupling.
RATIO RANGE:	1.28 to 3.0
OUTPUT SHAFT SIZE:	4.000" dia., 9" long, 1" X 1/2" keyway.
OUTPUT SHAFT LOCATION:	6 o'clock std, 12, 3, and 9 o'clock optional
SAE HOUSINGS:	#00, #0, #1/2, #1
*FLYWHEEL COUPLINGS:	Various clutches, couplings, and drive plates through SAE 24".
REAR SUPPORT:	Integral foot mounts provided.
LUBRICATION:	Integral Lube pump supplied
COOLING:	Oil/water shell-and-tube cooler furnished if required. Various options.
**SIDE LOAD CAPABLE:	Yes. Contact Cotta for specs and limits.
***APPROXIMATE WEIGHT:	1500 lbs.

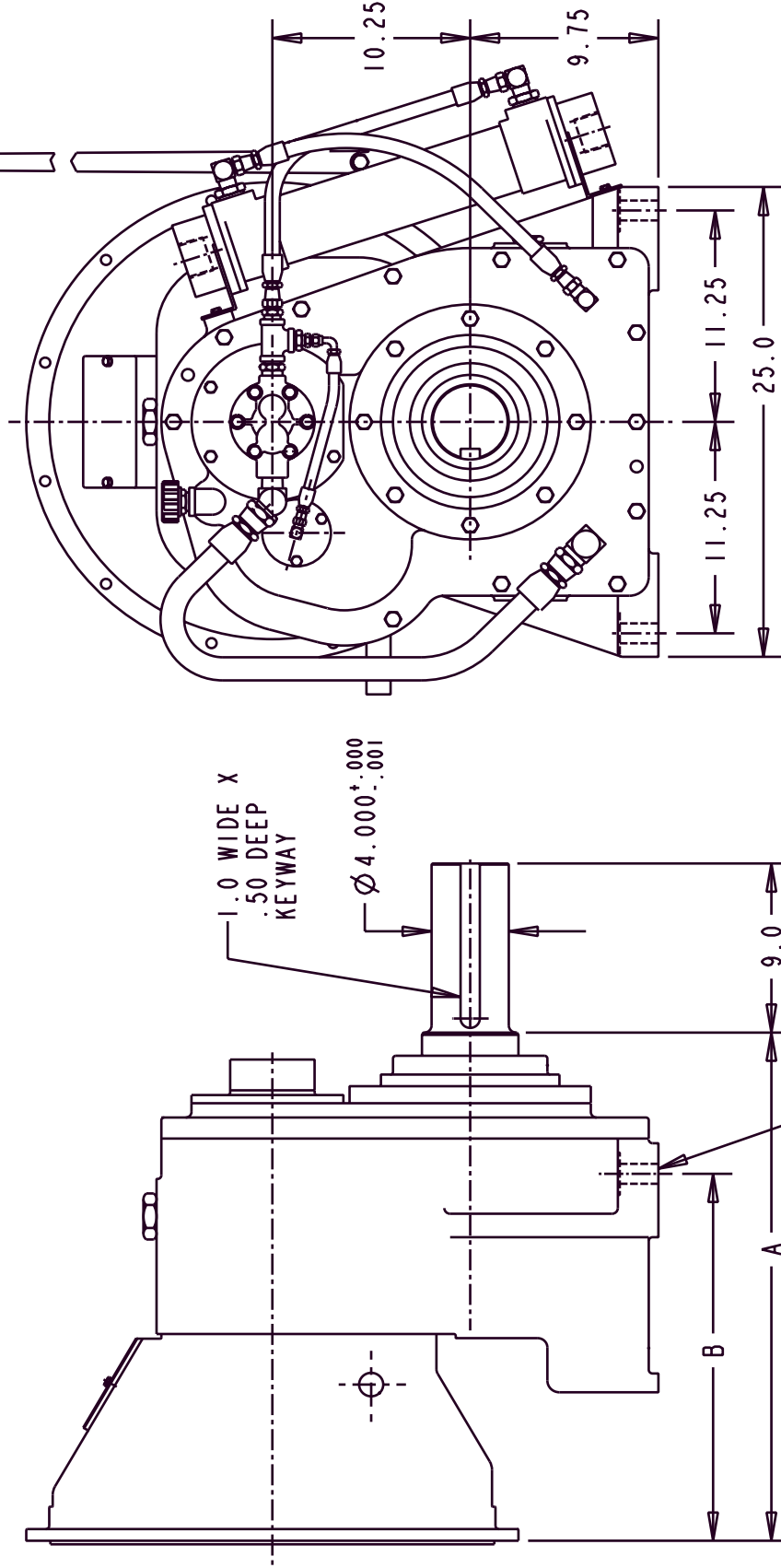
* Flywheel coupling selection requires Cotta technical review and approval.

** Some speed reducers output shafts are suitable for chain or belt side pull drives while others are not. Provide complete application details to Cotta for recommendations and approval.

*** Weight listed is an average. Actual weight can vary substantially with options such as SAE housing size and flywheel coupling choices.



This drawing shows general arrangement and approximate space claim. Do not design or lay out using this drawing. Use only certified drawings provided by Cotta Engineering.



BELHSG SAE#	DIM A	DIM B
#1 & #1/2	27.0	19.5
#0 & #00	28.25	29.75
#0 (DEEP)	30.5	23.0

GR1600E DRAWING



MODEL GR3200A

SPEED REDUCER

Product Description

Model GR3200A is a single-stage reduction gearbox designed for direct mounting to industrial engines via an SAE flange and driven in standard engine rotation (CW facing input shaft). Tabulated below are nominal power and speed capacity together with standard options. Contact Cotta to discuss other options or specialized requirements.

OUTPUT ROTATION:	Opposite to input.
MAX INPUT TORQUE:	5500 lb-ft.
MAX INPUT SPEED:	2200 RPM or as otherwise limited by input clutch or coupling.
RATIO RANGE:	1.19 to 2.89
OUTPUT SHAFT SIZE:	4.750" dia., 7" long 1.25" X .4375" keyway.
OUTPUT SHAFT LOCATION:	6 o'clock std, 12, 3, and 9 o'clock optional
SAE HOUSINGS:	#00, #0
*FLYWHEEL COUPLINGS:	Various clutches, couplings, and drive plates through SAE 24"
REAR SUPPORT:	Integral foot mounts provided.
LUBRICATION:	Integral Lube pump supplied
COOLING:	Oil/water shell-and-tube cooler furnished if required. Various options.
**SIDE LOAD CAPABLE:	No. Contact Cotta for recommendations.
***APPROXIMATE WEIGHT:	1800 lbs.

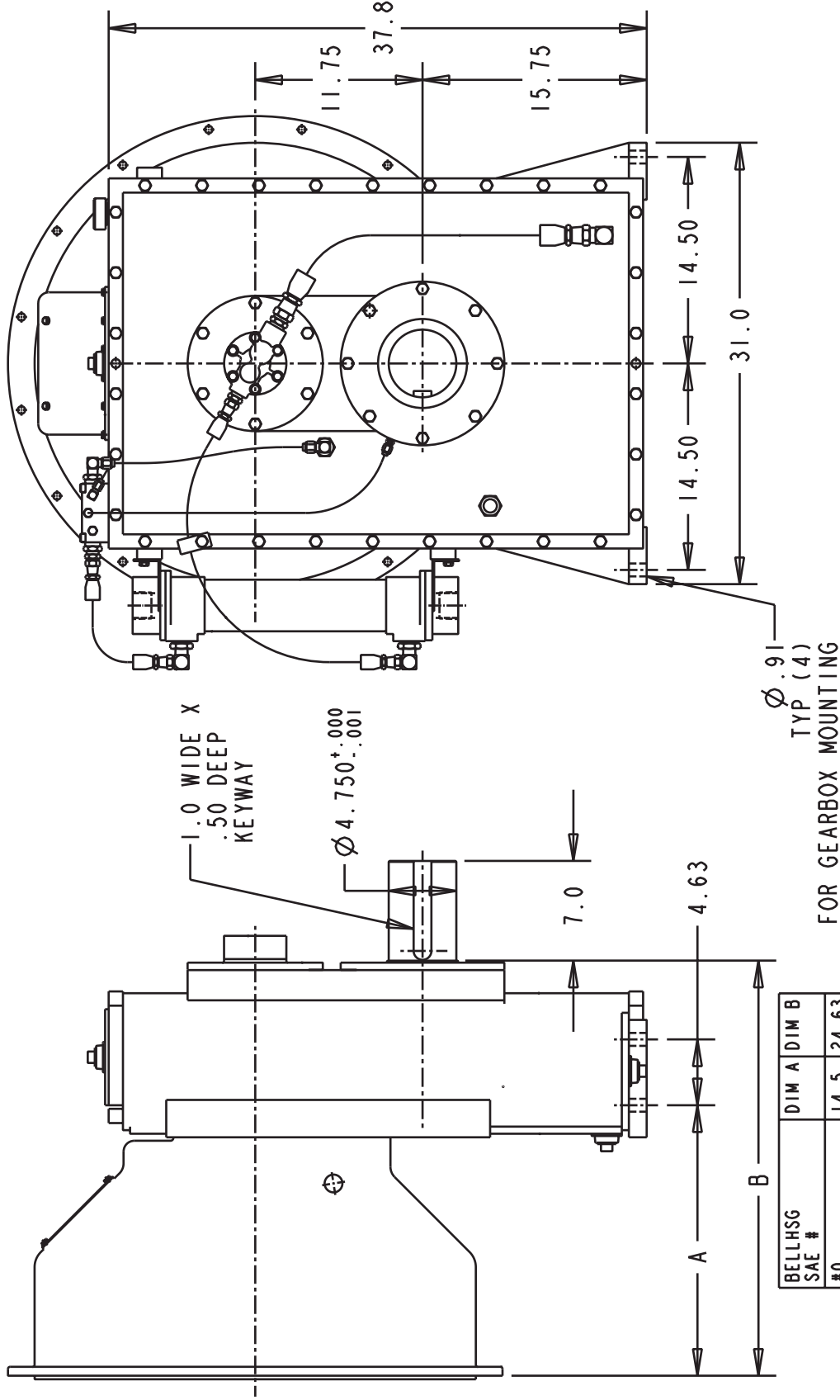
* Flywheel coupling selection requires Cotta technical review and approval.

** Some speed reducers output shafts are suitable for chain or belt side pull drives while others are not. Provide complete application details to Cotta for recommendations and approval.

*** Weight listed is an average. Actual weight can vary substantially with options such as SAE housing size and flywheel coupling choices.



This drawing shows general arrangement and approximate space claim. Do not design or lay out using this drawing. Use only certified drawings provided by Cotta Engineering.



BELLHSG SAE #	DIM A	DIM B
#0	14.5	24.63
#0 (DEEP)	16.75	26.88
#0 (EXTRA DEEP)	19.0	29.12
#00	14.5	24.62
#00 (DEEP)	19.0	29.12

GR3200A DRAWING



MODEL GR3200E

SPEED REDUCER

Product Description

Model GR3200E is a single-stage reduction gearbox designed for direct mounting to industrial engines via an SAE flange and driven in standard engine rotation (CW facing input shaft). This unit incorporates an idler shaft to provide output rotation same as input. Tabulated below are nominal power and speed capacity together with standard options. Contact Cotta to discuss other options or specialized requirements.

OUTPUT ROTATION:	Same as input.
MAX INPUT TORQUE:	4500 lb-ft.
MAX INPUT SPEED:	RPM or as otherwise limited by input clutch or coupling.
RATIOS:	1.20 to 3.13
OUTPUT SHAFT SIZE:	4.750" dia., 7" long, with 1.25" X .4375" keyway.
OUTPUT SHAFT LOCATION:	6 o'clock std, 12, 3, and 9 o'clock optional
SAE HOUSINGS:	#00, #0
*FLYWHEEL COUPLINGS:	Various clutches, couplings, and drive plates through SAE 24".
REAR SUPPORT:	Integral foot mounts provided.
LUBRICATION:	Integral Lube pump supplied
COOLING:	Oil/water shell-and-tube cooler furnished if required. Various options.
**SIDE LOAD CAPABLE:	No. Contact Cotta for recommendations.
***APPROXIMATE WEIGHT:	2000 lbs.

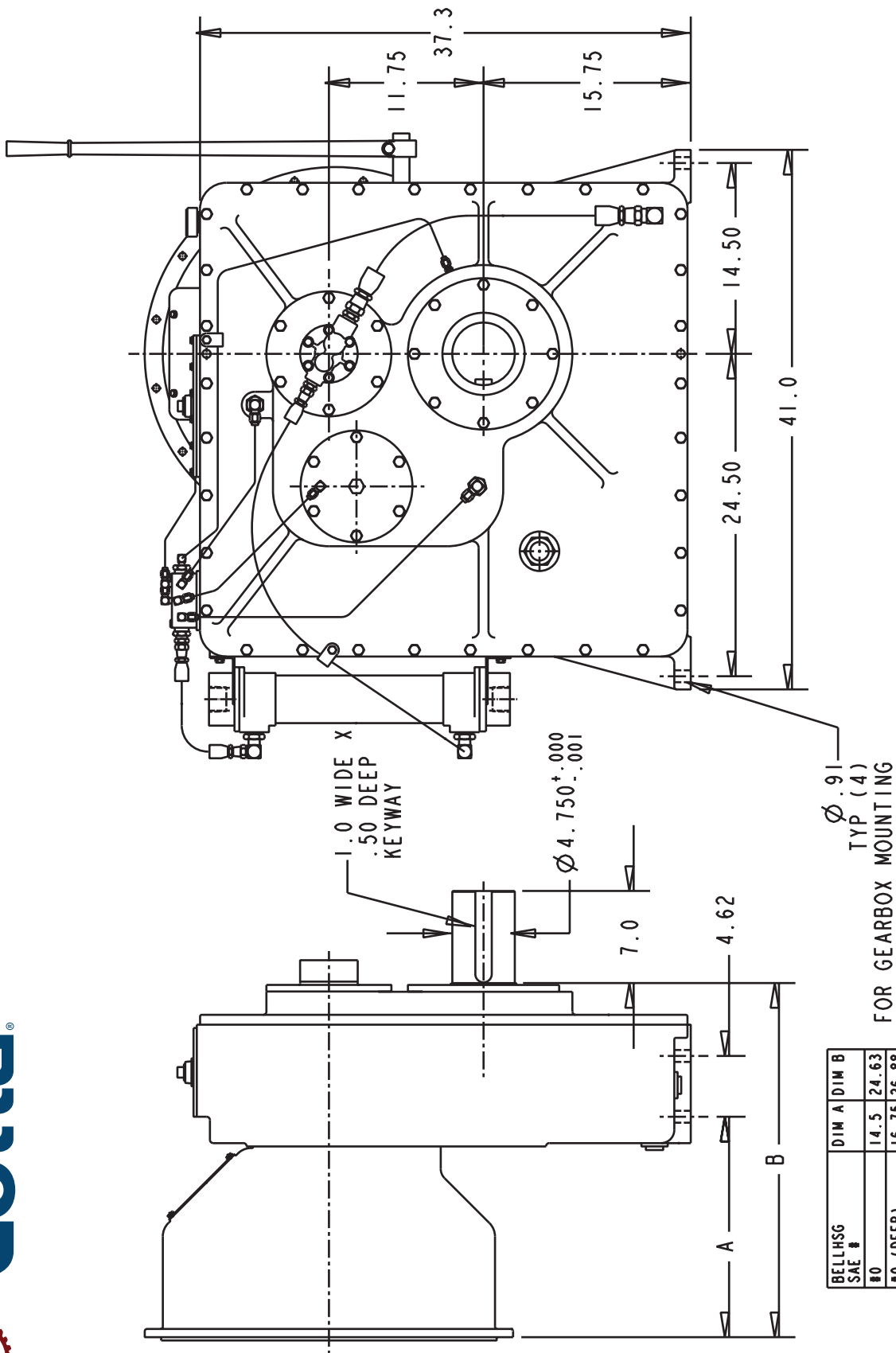
* Flywheel coupling selection requires Cotta technical review and approval.

** Some speed reducers output shafts are suitable for chain or belt side pull drives while others are not. Provide complete application details to Cotta for recommendations and approval.

*** Weight listed is an average. Actual weight can vary substantially with options such as SAE housing size and flywheel coupling choices.



This drawing shows general arrangement and approximate space claim. Do not design or lay out using this drawing. Use only certified drawings provided by Cotta Engineering.



BELHSG SAE #	DIM A	DIM B
#0	14.5	24.63
#0 (DEEP)	16.75	26.88
#0 (EXTRA DEEP)	19.0	29.12
#00	14.5	24.62
#00 (DEEP)	19.0	29.12

GR3200E DRAWING

High Ratio Speed Reducer Section



Gearboxes in this section utilize multiple reduction stages and/or extended centers to achieve higher reduction ratios. In general High Ratio gearboxes offer a range of approximately 2.5 to 7 ratio while Standard Ratio boxes offer an approximate range of 1 to 3 ratio.



MODEL SR12A

SPEED REDUCER

Product Description

Model SR12A is a single-stage reduction gearbox designed for direct mounting to industrial engines via an SAE flange and driven in standard engine rotation (CW facing input shaft). Tabulated below are nominal power and speed capacity together with standard options. Contact Cotta to discuss other options or specialized requirements.

OUTPUT ROTATION:	Opposite to input.
MAX INPUT TORQUE:	750 lb-ft.
MAX INPUT SPEED:	2500 RPM or as otherwise limited by input clutch or coupling.
RATIO RANGE:	1.03 to 3.87
OUTPUT SHAFT SIZE:	3.000" dia., 5.5" long, with 3/4" X 3/8" keyway. 3.500" dia., 5.5 long, 7/8" X 7/16" keyway above 3.45 ratio.
OUTPUT SHAFT LOCATION:	6 o'clock std, 12, 3, and 9 o'clock optional
SAE HOUSINGS:	#0, #1, #2
*FLYWHEEL COUPLINGS:	Various clutches, couplings, and drive plates through SAE 18 inch.
REAR SUPPORT:	Required. Customer supplied item. Mounting holes provided per drawing.
LUBRICATION:	Splash standard, pump optional.
COOLING:	Oil/water shell-and-tube cooler furnished if required. Various options.
**SIDE LOAD CAPABLE:	No. Contact Cotta for recommendations.
***APPROXIMATE WEIGHT:	750 lbs.

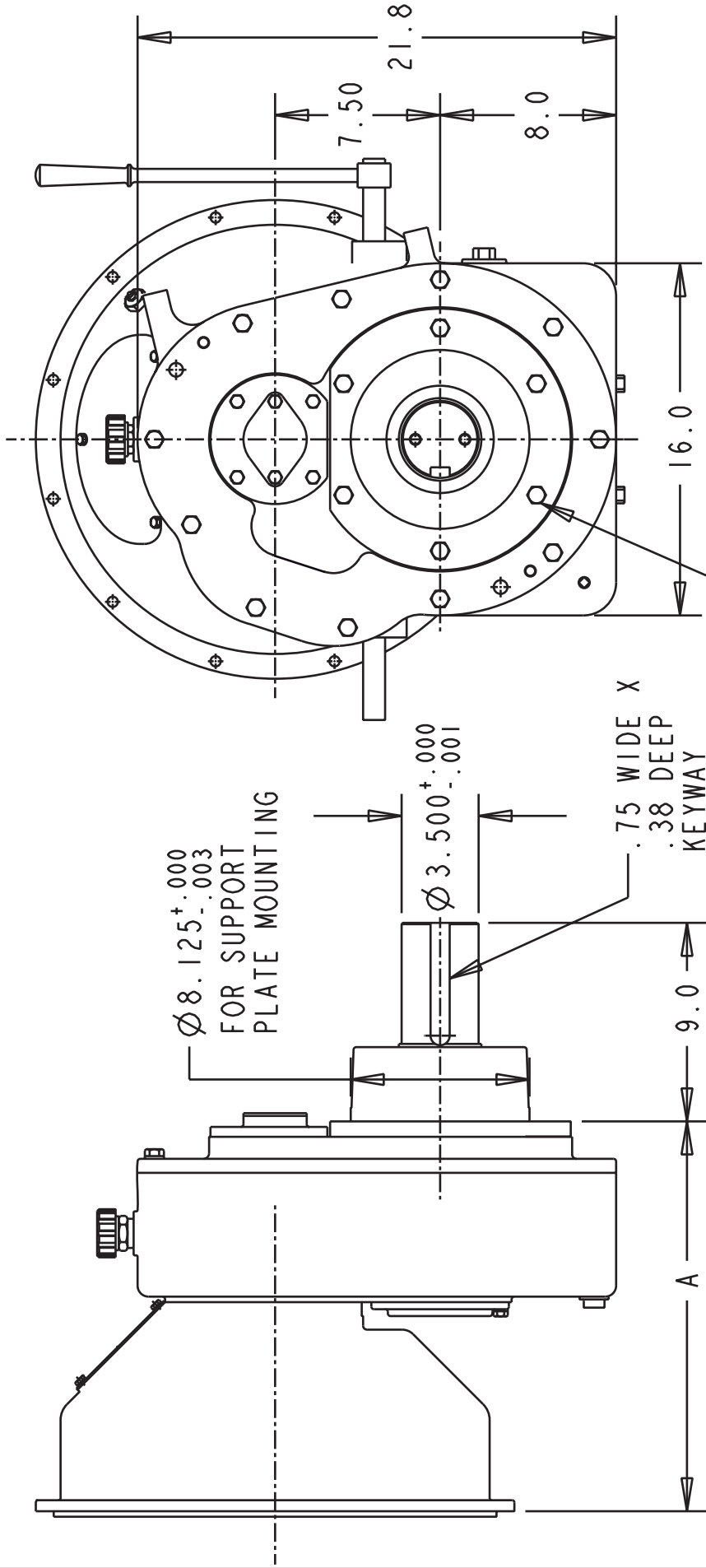
* Flywheel coupling selection requires Cotta technical review and approval.

** Some speed reducers output shafts are suitable for chain or belt side pull drives while others are not. Provide complete application details to Cotta for recommendations and approval.

*** Weight listed is an average. Actual weight can vary substantially with options such as SAE housing size and flywheel coupling choices.



This drawing shows general arrangement and approximate space claim. Do not design or lay out using this drawing. Use only certified drawings provided by Cotta Engineering.



$\varnothing 8.125^{+.000}_{-.003}$
FOR SUPPORT
PLATE MOUNTING

$\varnothing 3.500^{+.000}_{-.001}$

.75 WIDE X
.38 DEEP
KEYWAY

9.0

A

BELLHSG SAE#	DIM A
#1	17.7
#1 (DEEP) & #0	19.19

1/2-13 UNC CAPSCREW
(6) EQ SPACED ON A $\varnothing 10.125$ BC
FOR SUPPORT PLATE MOUNTING

SR12A DRAWING

Product Description

Model SR12E is a single-stage reduction gearbox designed for direct mounting to industrial engines via an SAE flange and driven in standard engine rotation (CW facing input shaft). This unit incorporates an idler shaft to provide output rotation same as input. Tabulated below are nominal power and speed capacity together with standard options. Contact Cotta to discuss other options or specialized requirements.

OUTPUT ROTATION:	Same as input.
MAX INPUT TORQUE:	750 lb-ft.
MAX INPUT SPEED:	2500 RPM or as otherwise limited by input clutch or coupling.
RATIO RANGE:	1.30 to 3.92
OUTPUT SHAFT SIZE:	3.000" dia., 5.5" long, with 3/4" X 3/8" keyway. 3.500" dia., 5.5" long, 7/8" X 7/16" keyway above 3.45 ratio.
OUTPUT SHAFT LOCATION:	6 o'clock std, 12, 3, and 9 o'clock optional
SAE HOUSINGS:	#0, #1, #2
*FLYWHEEL COUPLINGS:	Various clutches, couplings, and drive plates through SAE 18 inch.
REAR SUPPORT:	Required Customer supplied item. Mounting holes provided per drawing.
LUBRICATION:	Integral Lube pump supplied
COOLING:	Oil/water shell-and-tube furnished if required. Various options.
**SIDE LOAD CAPABLE:	No. Contact Cotta for recommendations.
***APPROXIMATE WEIGHT:	815 lbs.

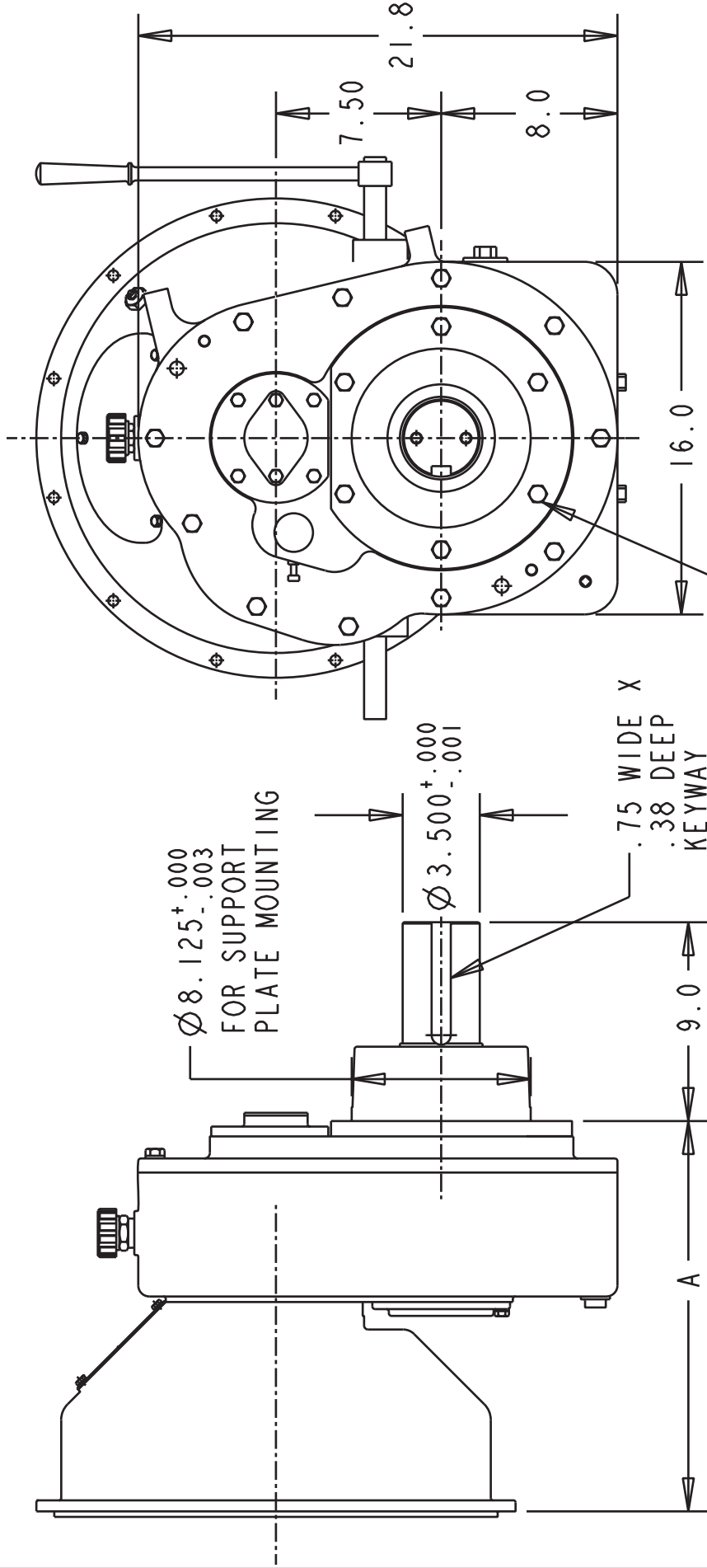
* Flywheel coupling selection requires Cotta technical review and approval.

** Some speed reducers output shafts are suitable for chain or belt side pull drives while others are not. Provide complete application details to Cotta for recommendations and approval.

*** Weight listed is an average. Actual weight can vary substantially with options such as SAE housing size and flywheel coupling choices.



This drawing shows general arrangement and approximate space claim. Do not design or lay out using this drawing. Use only certified drawings provided by Cotta Engineering.



BELHSG SAE#	DIM A
#1	17.7
#1 (DEEP) & #0	19.19

1/2-13 UNC CAPSCREW
 (6) EQ SPACED ON A Ø10.125 BC
 FOR SUPPORT PLATE MOUNTING

SR12E DRAWING



MODEL SR2030A

SPEED REDUCER

Product Description

Model SR2030A is a single-stage reduction gearbox designed for direct mounting to industrial engines via an SAE flange and driven in standard engine rotation (CW facing input shaft). Tabulated below are nominal power and speed capacity together with standard options. Contact Cotta to discuss other options or specialized requirements.

OUTPUT ROTATION:	Opposite to input.
MAX INPUT TORQUE:	750 lb-ft.
MAX INPUT SPEED:	2500 RPM or as otherwise limited by input clutch or coupling.
RATIO RANGE:	3.45 to 5.17
OUTPUT SHAFT SIZE:	3.500" dia., 5.5" long 7/8" X 7/16" keyway.
OUTPUT SHAFT LOCATION:	6 o'clock std, 12, 3, and 9 o'clock optional
SAE HOUSINGS:	#0, #1, #2, #3
*FLYWHEEL COUPLINGS:	Various clutches, couplings, and drive plates through SAE 18".
REAR SUPPORT:	Required. Customer supplied item. Mounting holes provided per drawing.
LUBRICATION:	Integral Lube pump supplied
COOLING:	Oil/water shell-and-tube cooler furnished if required. Various options.
**SIDE LOAD CAPABLE:	No. Contact Cotta for recommendations.
***APPROXIMATE WEIGHT:	900 lbs.

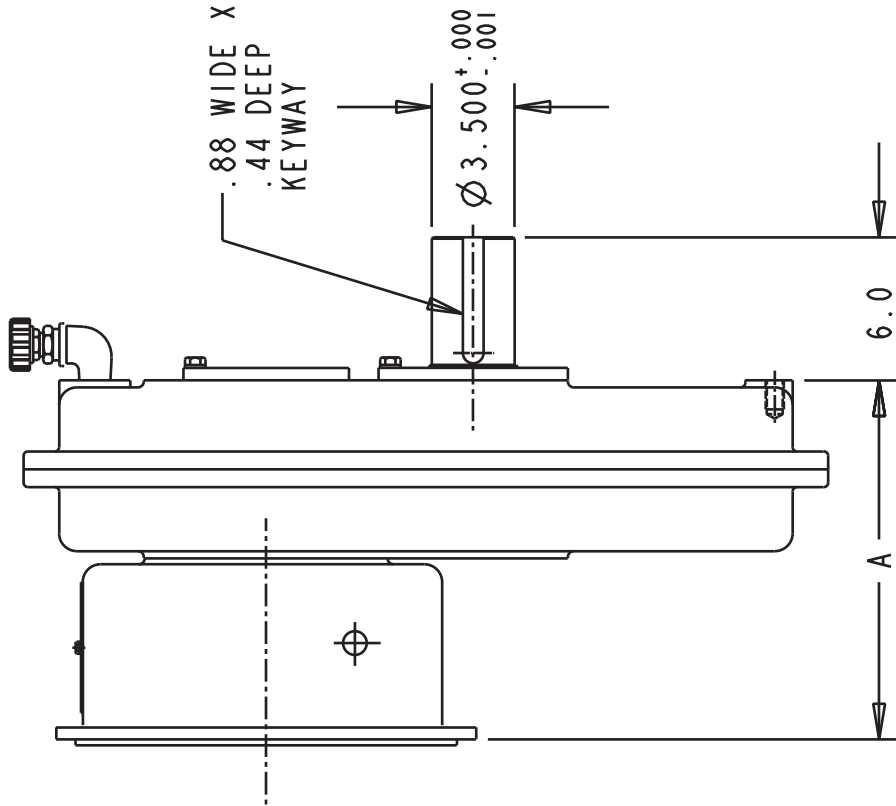
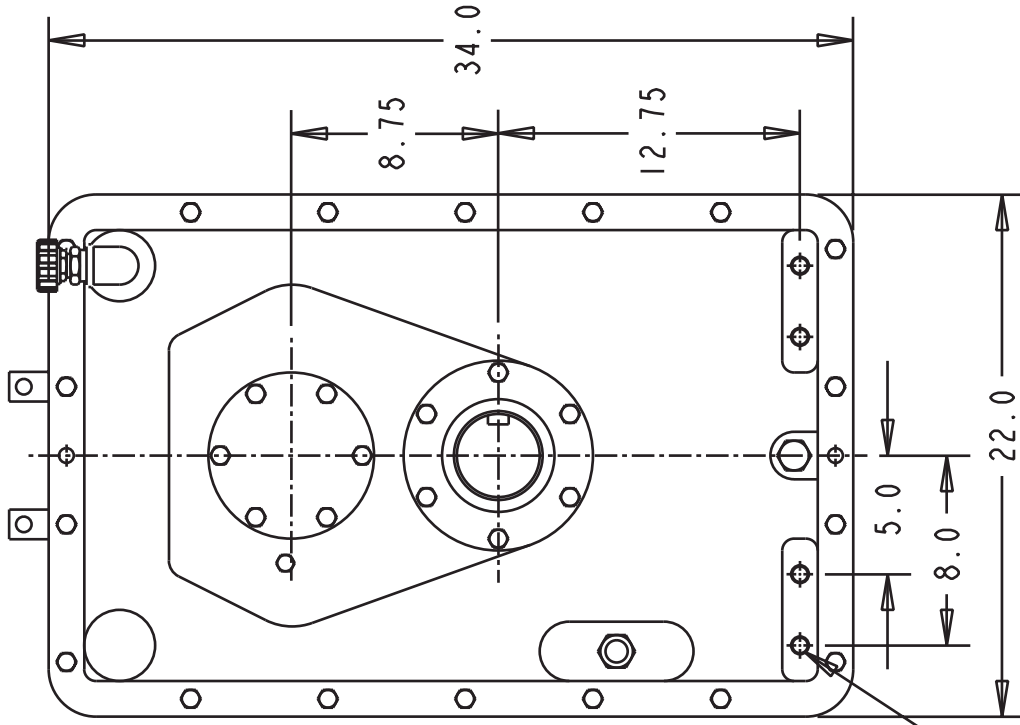
* Flywheel coupling selection requires Cotta technical review and approval.

** Some speed reducers output shafts are suitable for chain or belt side pull drives while others are not. Provide complete application details to Cotta for recommendations and approval.

*** Weight listed is an average. Actual weight can vary substantially with options such as SAE housing size and flywheel coupling choices.



This drawing shows general arrangement and approximate space claim. Do not design or lay out using this drawing. Use only certified drawings provided by Cotta Engineering.



3/4-10 UNC THREAD
TYP (4)
FOR GEARBOX MOUNTING

BELHSG SAE #	DIM A
#2	15.12
#1	17.00
#0	19.75

SR2030A DRAWING



MODEL SR2030E

SPEED REDUCER

Product Description

Model SR2030E is a single-stage reduction gearbox designed for direct mounting to industrial engines via an SAE flange and driven in standard engine rotation (CW facing input shaft). This unit incorporates an idler shaft to provide output rotation same as input. Tabulated below are nominal power and speed capacity together with standard options. Contact Cotta to discuss other options or specialized requirements.

OUTPUT ROTATION:	Same as input.
MAX INPUT TORQUE:	750 lb-ft.
MAX INPUT SPEED:	2500 RPM or as otherwise limited by input clutch or coupling.
RATIOS:	3.22 to 5.20
OUTPUT SHAFT SIZE:	3.500" dia., 5.5" long 7/8" X 7/16" keyway.
OUTPUT SHAFT LOCATION:	6 o'clock std, 12, 3, and 9 o'clock optional
SAE HOUSINGS:	#0, #1, #2, #3
*FLYWHEEL COUPLINGS:	Various clutches, couplings, and drive plates through SAE 18".
REAR SUPPORT:	Required. Customer supplied item. Mounting holes provided per drawing.
LUBRICATION:	Integral Lube pump supplied.
COOLING:	Oil/water shell-and-tube cooler furnished if required. Various options.
**SIDE LOAD CAPABLE:	No. Contact Cotta for recommendations.
***APPROXIMATE WEIGHT:	900 lbs.

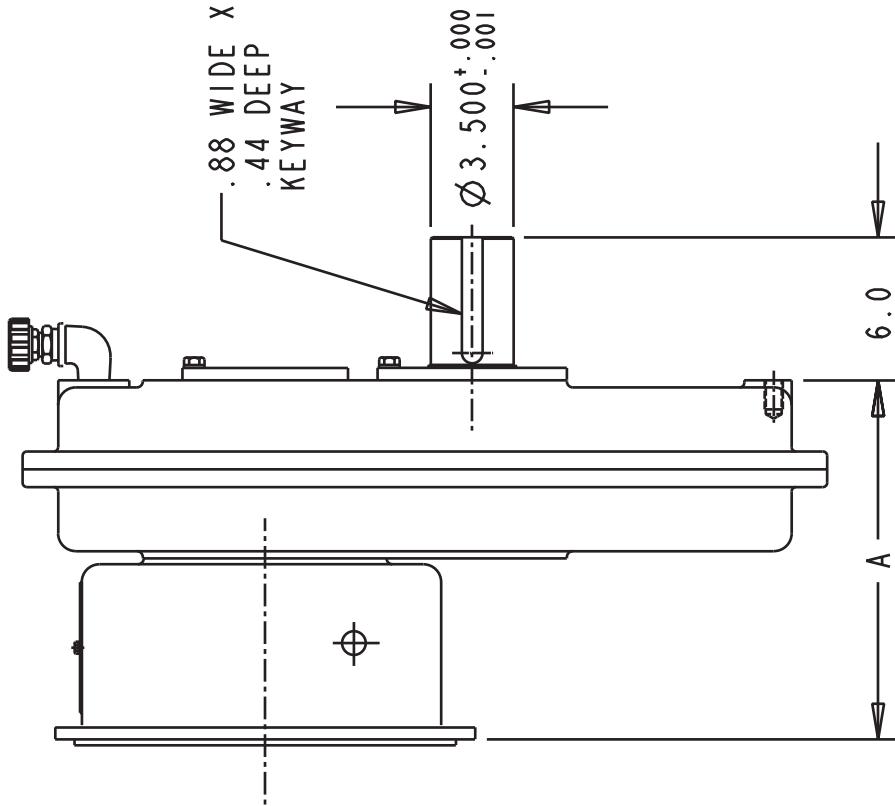
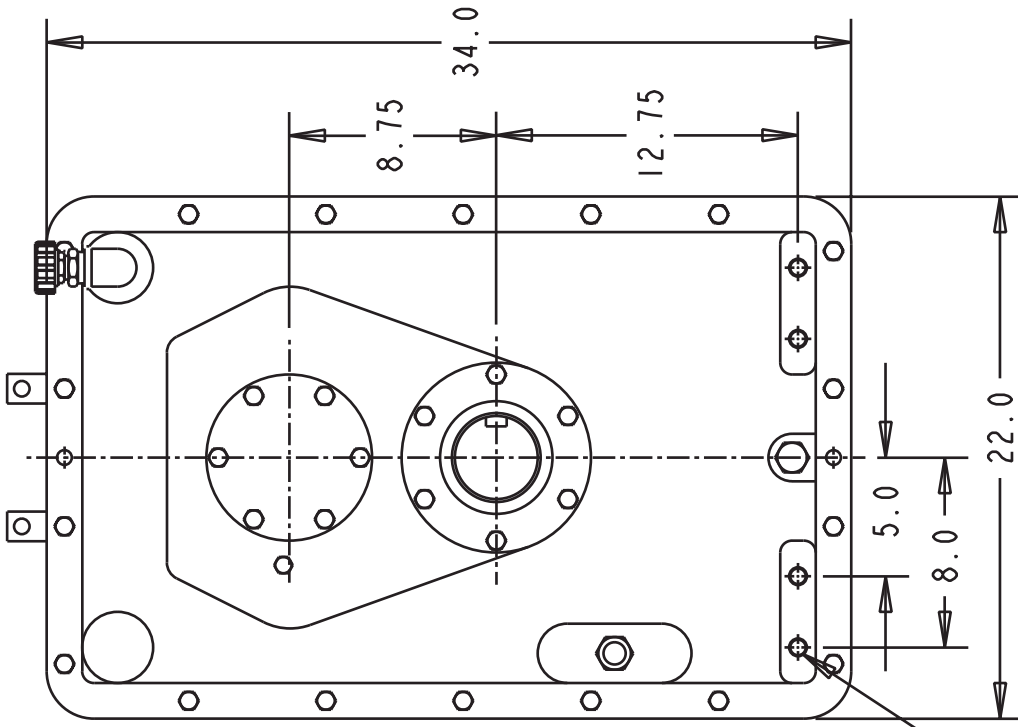
* Flywheel coupling selection requires Cotta technical review and approval.

** Some speed reducers output shafts are suitable for chain or belt side pull drives while others are not. Provide complete application details to Cotta for recommendations and approval.

*** Weight listed is an average. Actual weight can vary substantially with options such as SAE housing size and flywheel coupling choices.



This drawing shows general arrangement and approximate space claim. Do not design or lay out using this drawing. Use only certified drawings provided by Cotta Engineering.



3/4-10 UNC THREAD
TYP (4)
FOR GEARBOX MOUNTING

BELHSG SAE #	DIM A
#2	15.12
#1	17.00
#0	19.75

SR2030E DRAWING



MODEL SR972A SPEED REDUCER

Product Description

Model SR972A is a two-stage reduction gearbox (plus countershaft) designed for direct mounting to industrial engines via an SAE flange and driven in standard engine rotation (CW facing input shaft). Tabulated below are nominal power and speed capacity together with standard options. Contact Cotta to discuss other options or specialized requirements.

OUTPUT ROTATION:	.Opposite to input.
MAX INPUT TORQUE:	1000 lb-ft.
MAX INPUT SPEED:	2200 RPM or as otherwise limited by input clutch or coupling.
RATIO RANGE:	3.49 to 6.25
OUTPUT SHAFT SIZE:	3.500" dia., 4.5" long, 7/8" X 7/16" keyway.
OUTPUT SHAFT LOCATION:	6 o'clock.
SAE HOUSINGS:	#0, #1
*FLYWHEEL COUPLINGS:	Various clutches, couplings, and drive plates through SAE 18".
REAR SUPPORT:	Required. Customer supplied item. Mounting holes provided per drawing.
LUBRICATION:	Integral Lube pump supplied.
COOLING:	Oil/water shell-and-tube cooler furnished if required. Various options.
**SIDE LOAD CAPABLE:	No. Contact Cotta for recommendations.
***APPROXIMATE WEIGHT:	1200 lbs.

* Flywheel coupling selection requires Cotta technical review and approval.

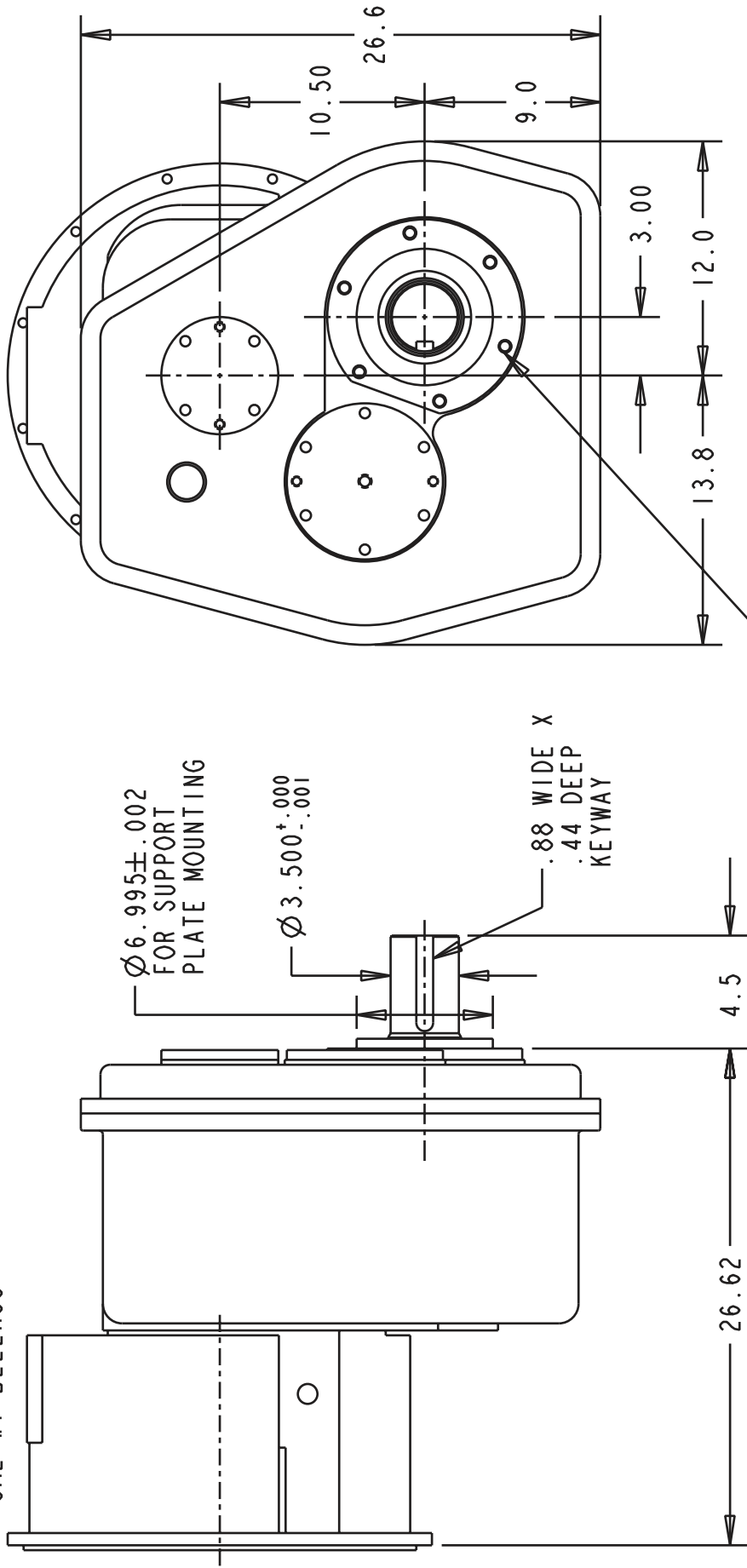
** Some speed reducers output shafts are suitable for chain or belt side pull drives while others are not. Provide complete application details to Cotta for recommendations and approval.

*** Weight listed is an average. Actual weight can vary substantially with options such as SAE housing size and flywheel coupling choices.



This drawing shows general arrangement and approximate space claim. Do not design or lay out using this drawing. Use only certified drawings provided by Cotta Engineering.

SAE #1 BELLHSG



5/8-11 UNC CAPSCREW
(6) EQ SPACED ON A $\text{Ø}8.750$ BC
FOR SUPPORT PLATE MOUNTING

SR972A DRAWING



MODEL SR972E

SPEED REDUCER

Product Description

Model SR972E is a two-stage reduction gearbox designed for direct mounting to industrial engines via an SAE flange and driven in standard engine rotation (CW facing input shaft). Tabulated below are nominal power and speed capacity together with standard options. Contact Cotta to discuss other options or specialized requirements.

OUTPUT ROTATION:	Same as input.
MAX INPUT TORQUE:	1000 lb-ft.
MAX INPUT SPEED:	2200 RPM or as otherwise limited by input clutch or coupling.
RATIOS:	3.09 to 6.25
OUTPUT SHAFT SIZE:	3.500" dia., 4.5" long, 7/8" X 7/16" keyway.
OUTPUT SHAFT LOCATION:	6 o'clock std, 12, 3, and 9 o'clock optional
SAE HOUSINGS:	#0, #1
*FLYWHEEL COUPLINGS:	Various clutches, couplings, and drive plates through SAE 18".
REAR SUPPORT:	Required. Customer supplied item. Mounting holes provided per drawing.
LUBRICATION:	Integral Lube pump supplied
COOLING:	Oil/water shell-and-tube cooler furnished if required. Various options.
**SIDE LOAD CAPABLE:	No. Contact Cotta for recommendations.
***APPROXIMATE WEIGHT:	1190 lbs.

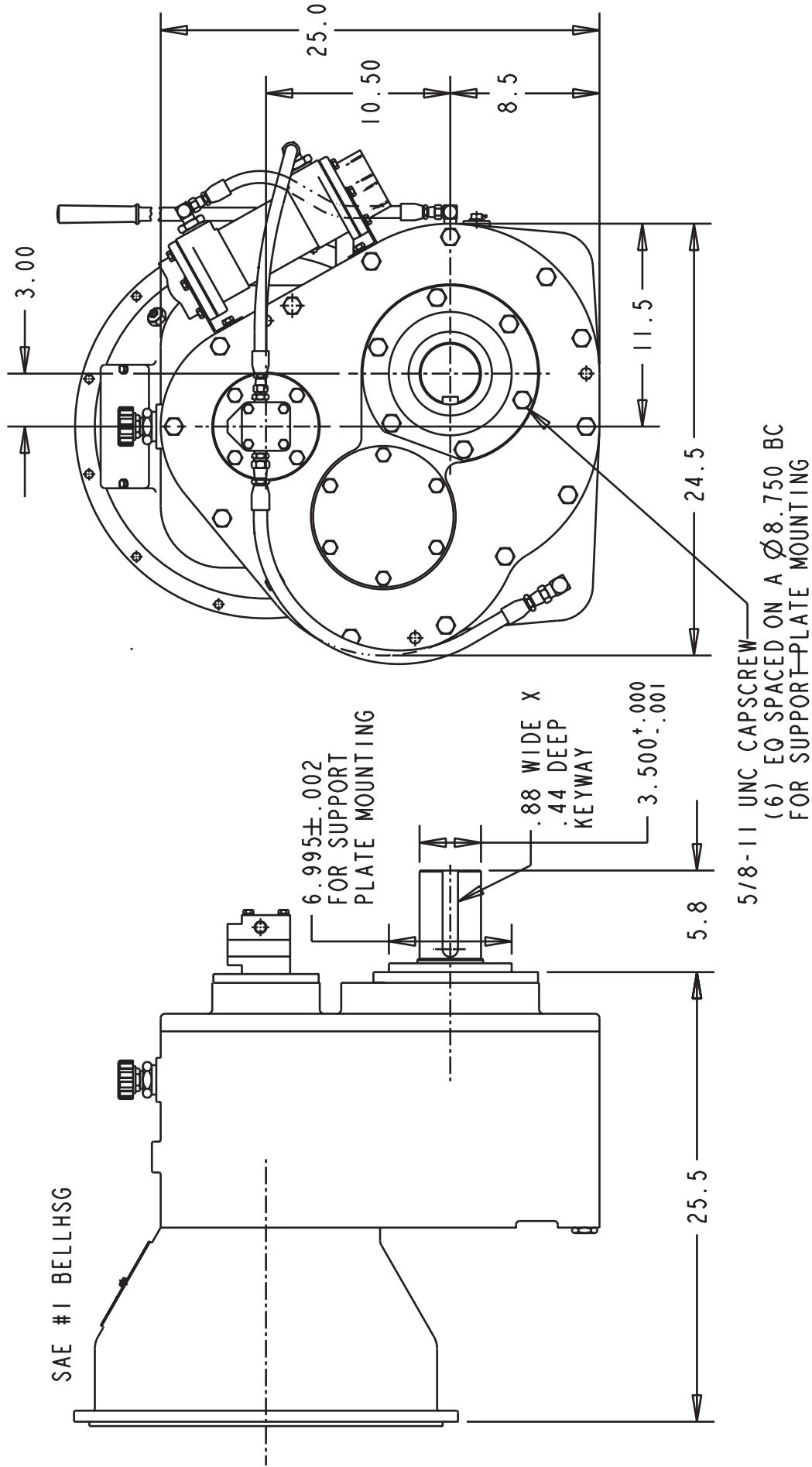
* Flywheel coupling selection requires Cotta technical review and approval.

** Some speed reducers output shafts are suitable for chain or belt side pull drives while others are not. Provide complete application details to Cotta for recommendations and approval.

*** Weight listed is an average. Actual weight can vary substantially with options such as SAE housing size and flywheel coupling choices.



This drawing shows general arrangement and approximate space claim. Do not design or lay out using this drawing. Use only certified drawings provided by Cotta Engineering.



SR972E DRAWING



MODEL SR2031E

SPEED REDUCER

Product Description

Model SR2031 is a two-stage reduction gearbox designed for direct mounting to industrial engines via an SAE flange and driven in standard engine rotation (CW facing input shaft). Tabulated below are nominal power and speed capacity together with standard options. Contact Cotta to discuss other options or specialized requirements.

OUTPUT ROTATION:	Same as input.
MAX INPUT TORQUE:	1150 lb-ft.
MAX INPUT SPEED:	2500 RPM or as otherwise limited by input clutch or coupling.
RATIOS:	3.5 to 7.05
OUTPUT SHAFT SIZE:	3.500" dia., 4.5" long 7/8" X 7/16" keyway.
OUTPUT SHAFT LOCATION:	6 o'clock to input.
SAE HOUSINGS:	#0, #1
*FLYWHEEL COUPLINGS:	Various clutches, couplings, and drive plates through SAE 18".
REAR SUPPORT:	Required. Customer supplied item. Mounting holes provided per drawing.
LUBRICATION:	Integral Lube pump supplied
COOLING:	Oil/water shell-and-tube cooler furnished if required. Various options.
**SIDE LOAD CAPABLE:	No. Contact Cotta for recommendations.
***APPROXIMATE WEIGHT:	1420 lbs.

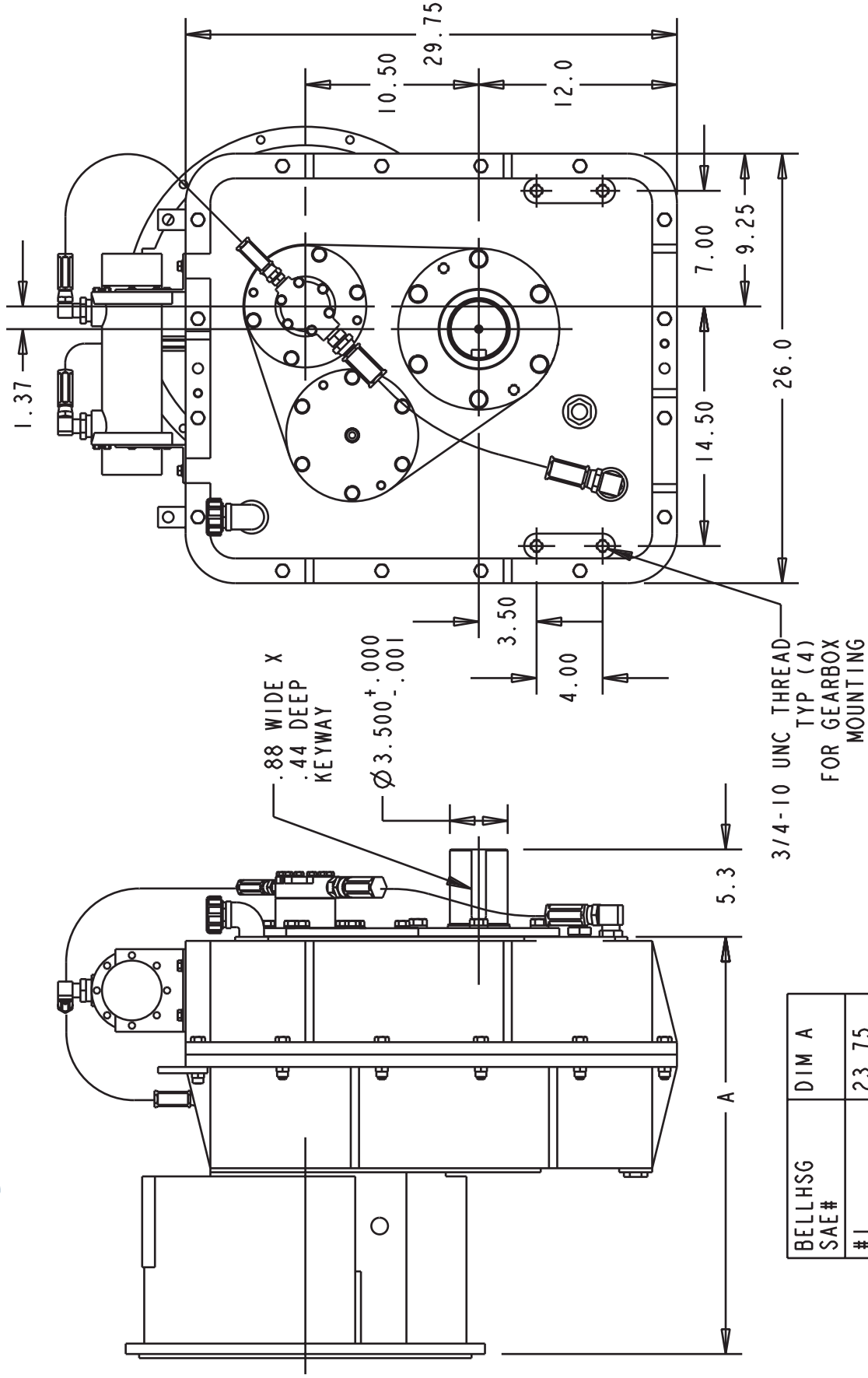
* Flywheel coupling selection requires Cotta technical review and approval.

** Some speed reducers output shafts are suitable for chain or belt side pull drives while others are not. Provide complete application details to Cotta for recommendations and approval.

*** Weight listed is an average. Actual weight can vary substantially with options such as SAE housing size and flywheel coupling choices.



This drawing shows general arrangement and approximate space claim. Do not design or lay out using this drawing. Use only certified drawings provided by Cotta Engineering.



BELHSG SAE#	DIM A
#1	23.75
#0	26.50

SR2031E DRAWING



MODEL GR975200 SPEED REDUCER

Product Description

Model GR975200 is a two-stage reduction gearbox designed for direct mounting to industrial engines via an SAE flange and driven in standard engine rotation (CW facing input shaft). Tabulated below are nominal power and speed capacity together with standard options. Contact Cotta to discuss other options or specialized requirements.

OUTPUT ROTATION:	Same as input.
MAX INPUT TORQUE:	2400 lb-ft.
MAX INPUT SPEED:	2200 RPM or as otherwise limited by input clutch or coupling.
RATIOS:	3.49 to 6.58.
OUTPUT SHAFT SIZE:	5.5" dia., 8" long, with 1.0" X .5" keyway.
OUTPUT SHAFT LOCATION:	6 o'clock std, 12, 3, and 9 o'clock optional
SAE HOUSINGS:	#00, #0, #1
*FLYWHEEL COUPLINGS:	Various clutches, couplings, and drive plates through SAE 24".
REAR SUPPORT:	Required. Customer supplied item. Mounting holes provided per drawing.
LUBRICATION:	Integral Lube pump supplied
COOLING:	Oil/water shell-and-tube furnished if required. Various options.
**SIDE LOAD CAPABLE:	No. Contact Cotta for recommendations.
***APPROXIMATE WEIGHT:	2300 lbs.

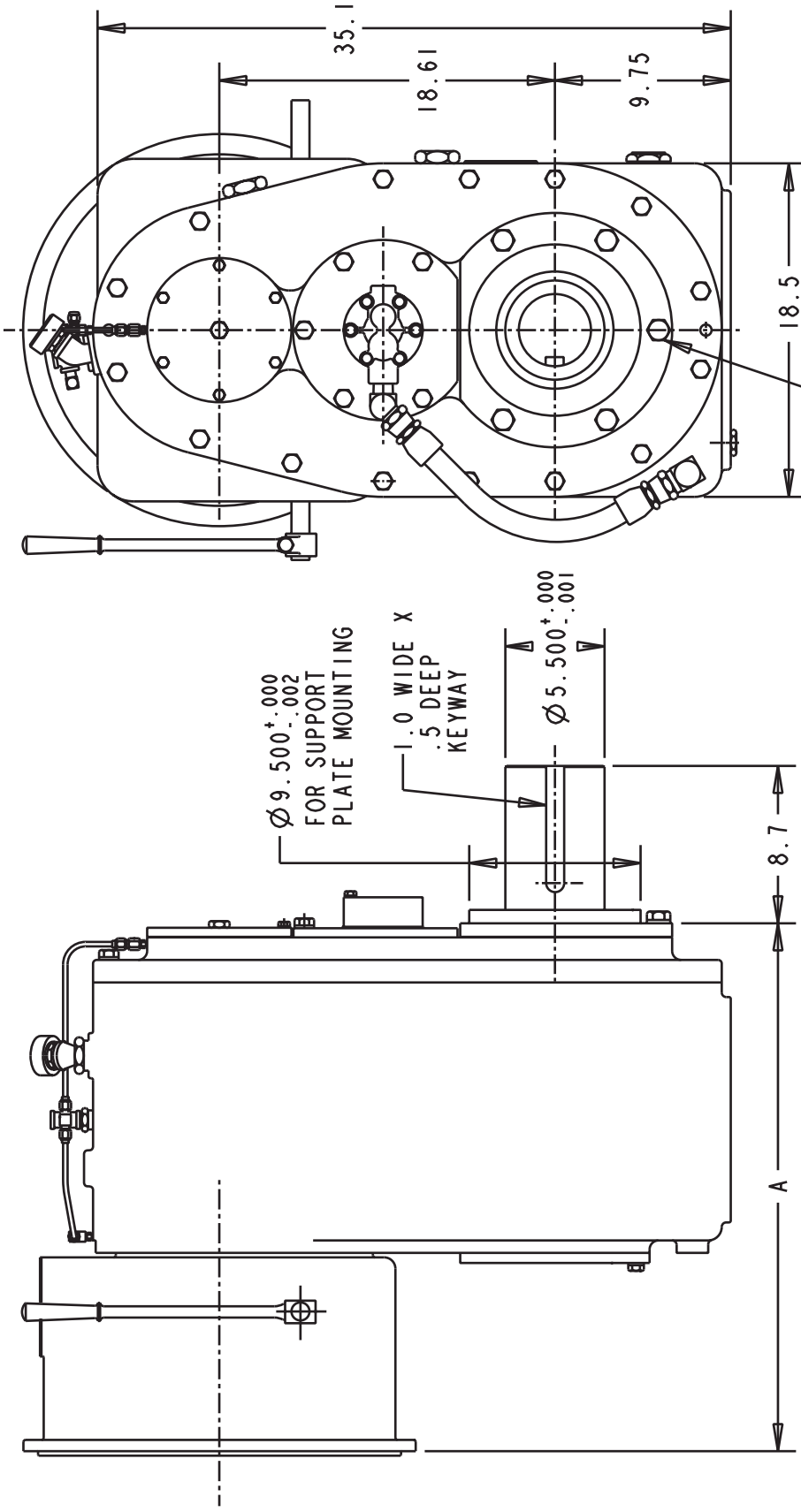
* Flywheel coupling selection requires Cotta technical review and approval.

** Some speed reducers output shafts are suitable for chain or belt side pull drives while others are not. Provide complete application details to Cotta for recommendations and approval.

*** Weight listed is an average. Actual weight can vary substantially with options such as SAE housing size and flywheel coupling choices.



This drawing shows general arrangement and approximate space claim. Do not design or lay out using this drawing. Use only certified drawings provided by Cotta Engineering.



BELLHSG SAE#	DIM A
#1 & #1/2	30.0
#0 & #00	32.75
#1 & #1/2 (DEEP)	31.5
#0 (DEEP)	35.0

GR975200 DRAWING



ISO 9001 Quality
Management



Global Supplier of Power Transmission Systems and Components

**Cotta Transmission
Company, LLC
1301 Prince Hall Drive
Beloit, WI 53511**

608-368-5600
www.cotta.com

**Member
American Gear
Manufacturers
Association**

