



## MODEL SN2297 HIGH SPEED GEARBOX

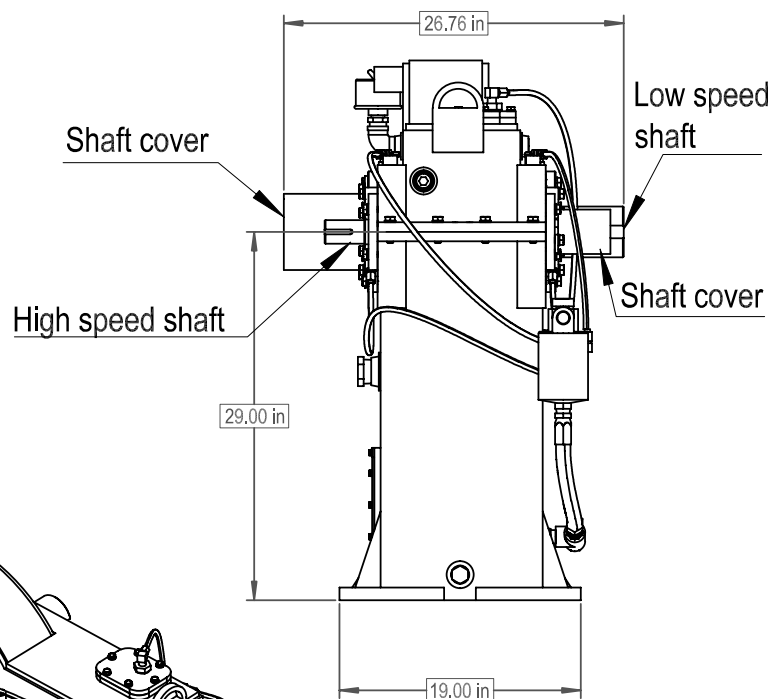
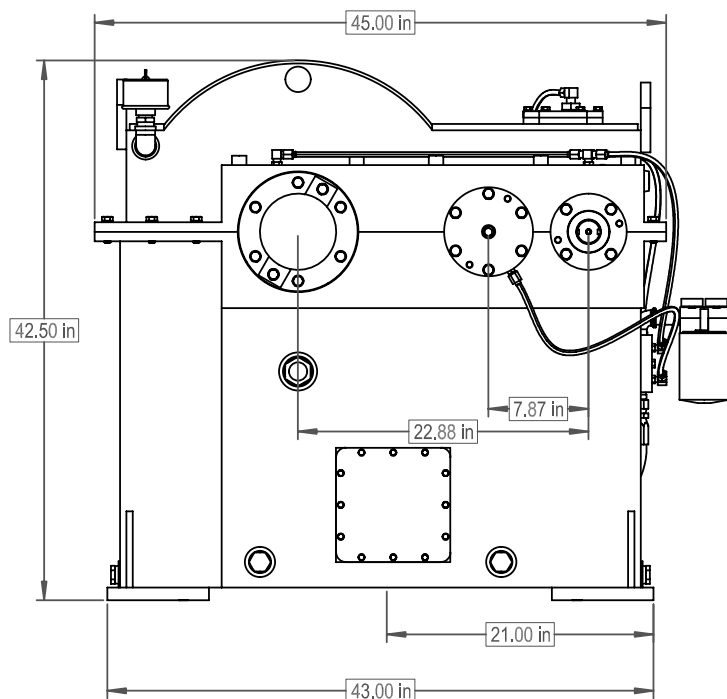
### Product Description:

Model SN2297 is a foot mounted, two stage increasing, single output, high speed gearbox designed for test stand use where high input torque at low input speed is required. One such application is as a speed resolver between a test vehicle axle and load dynamometer. This gearbox has the input and output shaft extended through both sides to provide interface symmetry from either side of the gearbox.

<b>POWER:</b>	200 HP 8050 lb-ft at low speed shaft
<b>OUTPUT SPEED:</b>	8040 RPM max
<b>RATIOS:</b>	18.29 overspeed. Contact Cotta for other available ratios.
<b>MAX ACCEL / DECEL RATE:</b>	2000 RPM / sec at output
<b>INPUT CONFIGURATION:</b>	Keyed stub shaft is standard. Contact Cotta for optional inputs.
<b>OUTPUT CONFIGURATION:</b>	Double-key stub shaft is typical. Various other shafting outputs available.
<b>ROTATION:</b>	Input can be driven ccw or cw. Output rotates in the same direction as input.
<b>LUBRICATION:</b>	Positive delivery. Pump, heat exchanger, and necessary temp and pressure controls are furnished.
<b>OPTIONS:</b>	Accelerometers, speed pickup, and other application specific items can be accommodated or supplied.
<b>APPROXIMATE WEIGHT:</b>	1850 lbs.
<b>STANDARD FINISH:</b>	2-part polyurethane enamel

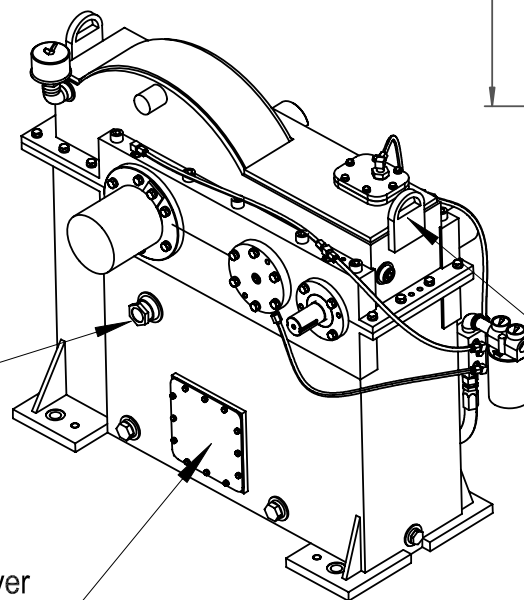


This drawing shows general arrangement and approximate space claim. Do not design, scale, or lay out using this drawing. Use only certified drawings provided by Cotta Engineering.



Oil level sight gage

Inspection access cover



Lifting tab (2)

SN2297 DRW.