



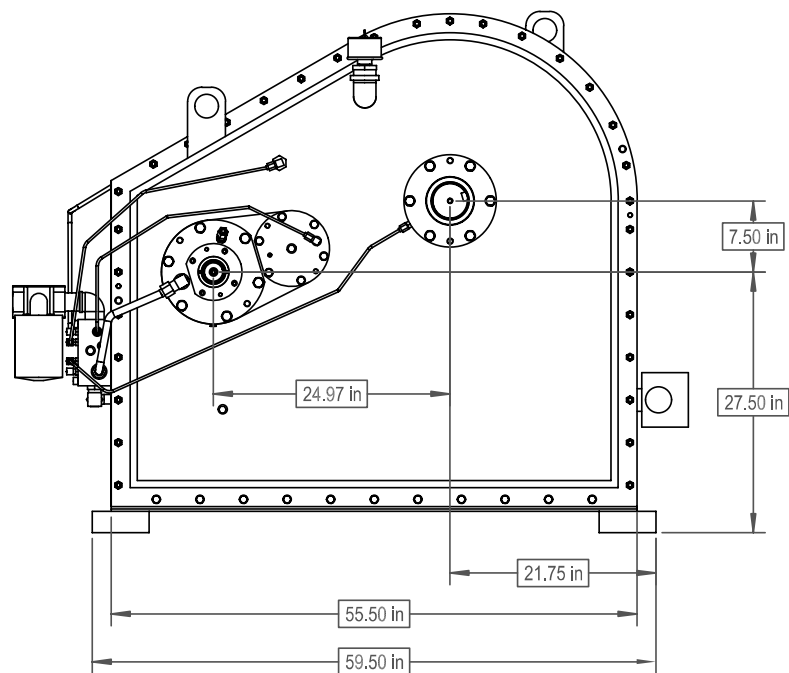
# MODEL SN2264

## 4 SQUARE TAILSTOCK GEARBOX

### Product Description:

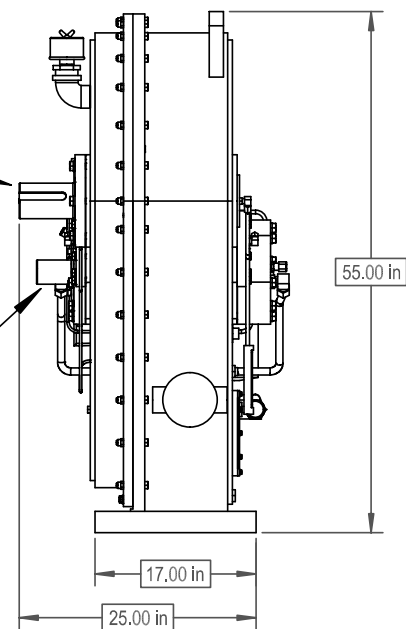
Model SN2264 is a foot mounted, two stage increasing, single output, high speed gearbox for use with companion gearbox SN2265 to comprise a 4-square test system. This gearbox completes the torque loop and also provides a speed increase to the test article. The high-speed shaft is offset vertically from the input to accommodate a similar offset in the test article. Journal bearings are used on the high speed shaft.

<b>POWER:</b>	7500 lb-ft max torque at low speed shaft 200 HP max
<b>OUTPUT SPEED:</b>	22,000 RPM at high speed shaft
<b>RATIOS:</b>	15.89 overspeed. Contact Cotta for other available ratios
<b>MAX ACCEL / DECEL RATE:</b>	2000 RPM / sec at output
<b>INPUT CONFIGURATION:</b>	Keyed stub shaft is standard. Contact Cotta for optional inputs.
<b>OUTPUT CONFIGURATION:</b>	Customer specified shaft is typical. Various other shafting and mounting pads available.
<b>ROTATION:</b>	Low speed shaft can be driven ccw or cw. High speed shaft rotates in the same direction.
<b>LUBRICATION:</b>	Positive delivery. Pump, heat exchanger, and necessary temp and pressure controls are furnished.
<b>OPTIONS:</b>	Accelerometers, speed pickup, and other application specific items can be accommodated or supplied.
<b>APPROXIMATE WEIGHT:</b>	2000 lbs.
<b>STANDARD FINISH:</b>	2-part polyurethane enamel

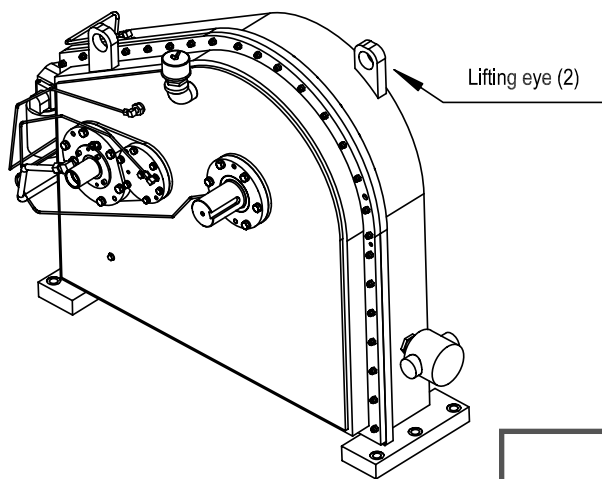


Low speed shaft Keyed  
stub-shaft typical

Customer specified  
high speed shaft



Note: this gearbox is designed  
for use with SN2265 headstock  
gearbox.



**SN2264 DRW.**