



MODEL SN2219 HIGH SPEED GEARBOX

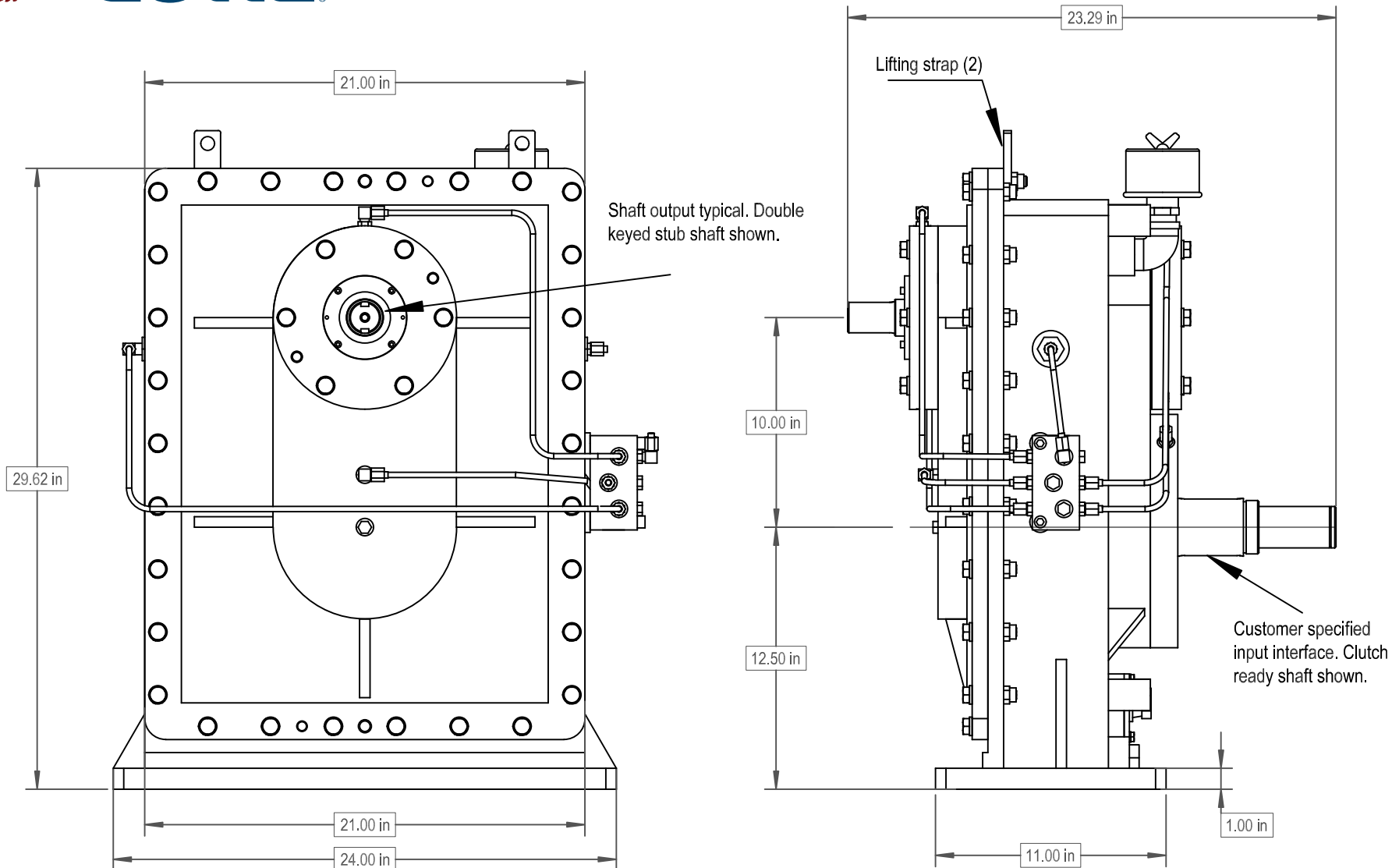
Product Description:

Model SN2219 is a single increasing stage, single output, foot mounted high-speed gearbox designed for test stand use

POWER:	Up to 1450 HP.
OUTPUT SPEED:	Up to 20,500 RPM
RATIOS:	Up to 5.04 overspeed. Contact Cotta specific ratios within range
MAX ACCEL / DECEL RATE:	2000 rpm/sec at output. For higher rates contact Cotta.
INPUT CONFIGURATION:	Keyed stub shaft is standard. Contact Cotta for optional inputs.
OUTPUT CONFIGURATION:	Stub shaft is typical. Aerospace accessory mounting pads and various other shafts are available.
ROTATION:	Input can be driven ccw or cw. Outputs rotate opposite to input.
LUBRICATION:	Positive delivery. Pump, heat exchanger, and necessary temp and pressure controls are furnished.
OPTIONS:	Accelerometers, speed pickup, and other application specific items can be accommodated or supplied.
APPROXIMATE WEIGHT:	800 lbs.
STANDARD FINISH:	2-part polyurethane enamel



This drawing shows general arrangement and approximate space claim. Do not design, scale, or lay out using this drawing. Use only certified drawings provided by Cotta Engineering.



SN2219 DRW.