

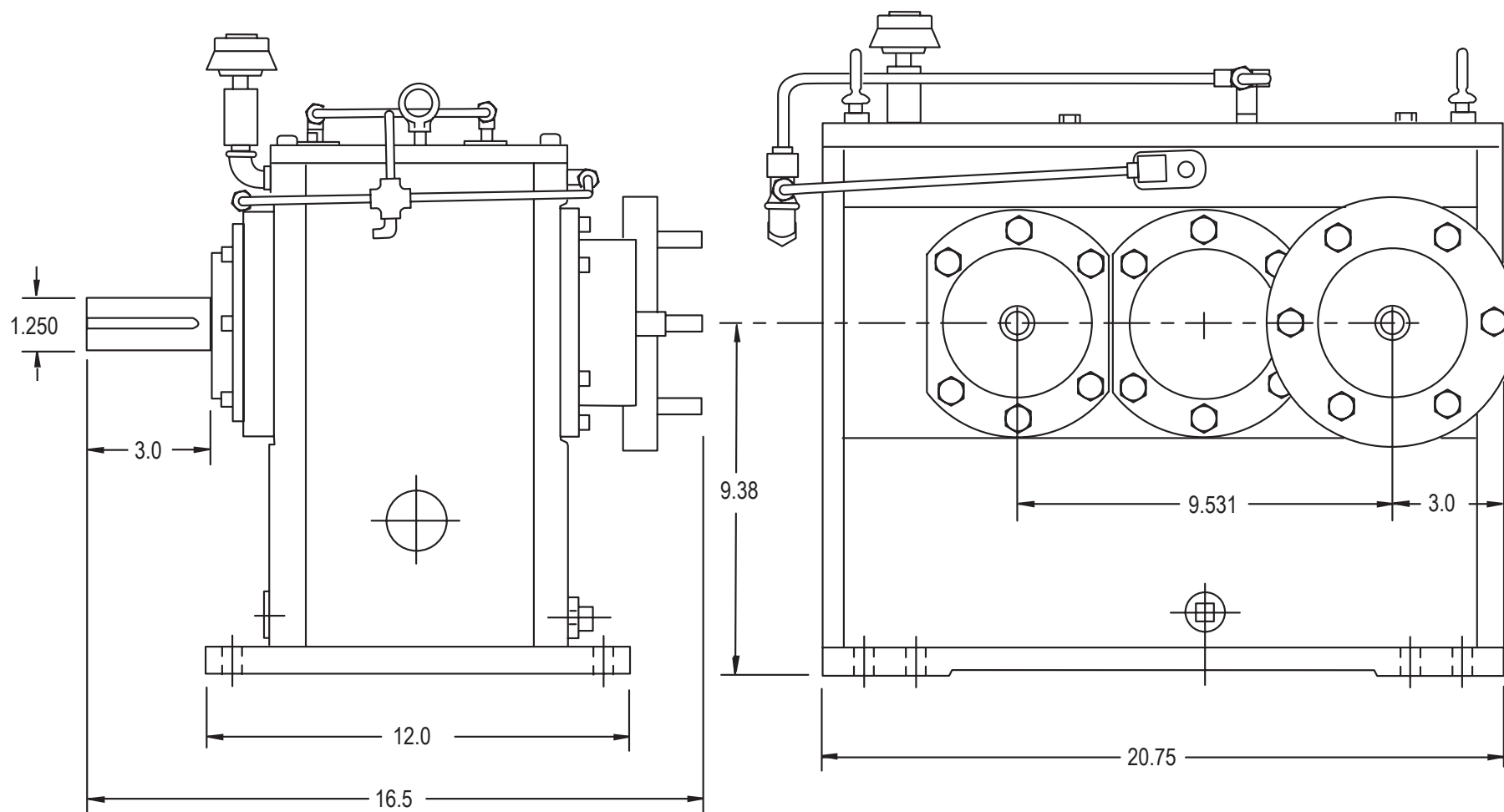


MODEL SN1708 HIGH SPEED GEARBOX

Product Description:

Model SN1708 is a two increasing stage, single output, foot mounted, high-speed gearbox. This gearbox is suitable for test stand use where speed requirements are 50,000 RPM or greater.

POWER:	250 HP nominal
OUTPUT SPEED:	60,000 RPM capable, 50,000 rpm typical
RATIOS:	8.43, 8.94, 9.18, 15.225 Max. Contact Cotta for other available ratios.
MAX ACCEL / DECEL RATE:	2000 rpm/sec at output. For higher rates contact Cotta.
INPUT CONFIGURATION:	Stub shaft is standard. Contact Cotta for optional inputs.
OUTPUT CONFIGURATION:	Aerospace accessory mounting pad is typical. Various other pads and shafting options available.
ROTATION:	Input can be driven ccw or cw. Output rotates in the same direction as input.
LUBRICATION:	Positive delivery. Pump, heat exchanger, and necessary temp and pressure controls are furnished.
OPTIONS:	Accelerometers, speed pickup, and other application specific items can be accommodated or supplied.
APPROXIMATE WEIGHT:	1100 LBS.
STANDARD FINISH:	2-part polyurethane enamel



SN1708 DRW.