

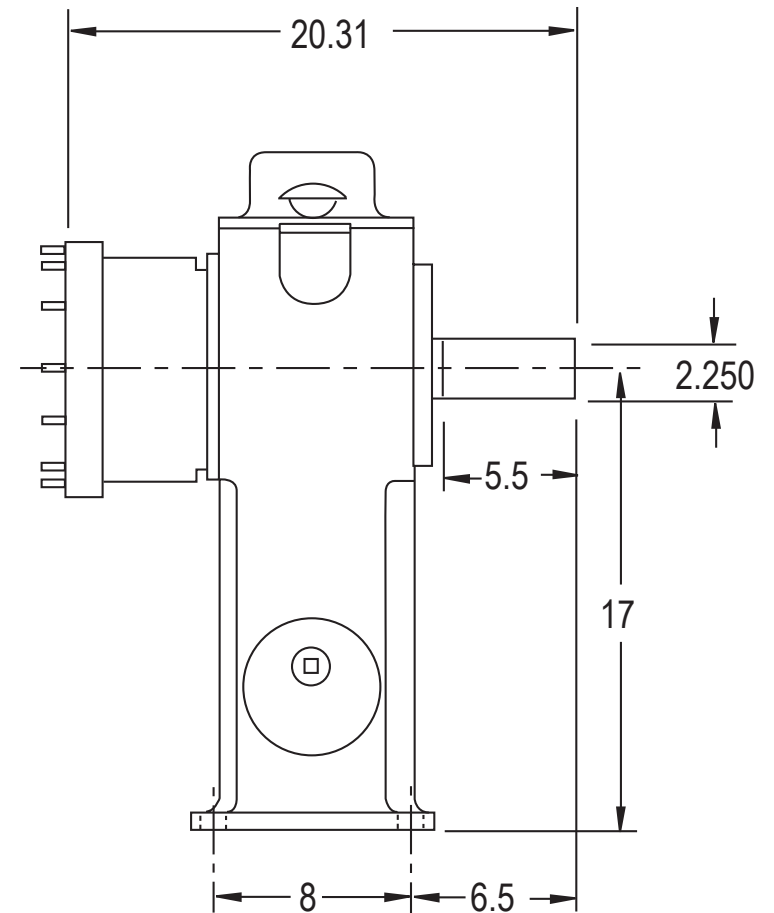
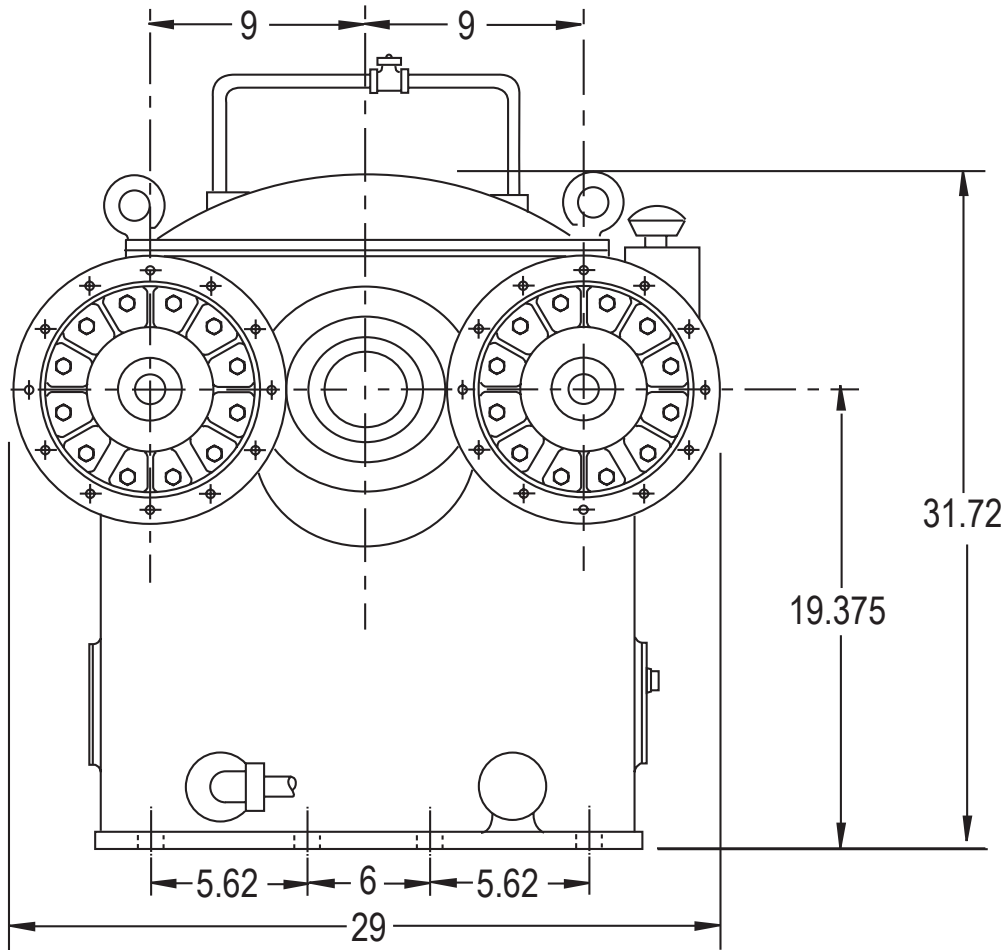


## MODEL SN1678 HIGH SPEED GEARBOX

### Product Description:

Model SN1678 is a single increasing stage, two output, foot mounted high speed gearbox that is designed for test stand use. This model has a stub input shaft and two output pads. Both output pads have the same direction of rotation and the same ratio. There is a special design option to have a different ratios on each output.

<b>POWER:</b>	600 HP nominal
<b>OUTPUT SPEED:</b>	Up to 30,000 RPM
<b>RATIOS:</b>	Up to 6.67 overspeed. Contact Cotta for specific ratios within range
<b>MAX ACCEL / DECEL RATE:</b>	2000 rpm/sec at output. For higher rates contact Cotta.
<b>INPUT CONFIGURATION:</b>	Keyed stub shaft is standard. Contact Cotta for optional inputs.
<b>OUTPUT CONFIGURATION:</b>	AND20006 pad is typical. Shafts and various other pads available.
<b>ROTATION:</b>	Input can be driven ccw or cw. Outputs rotate at the same speed and opposite to input.
<b>LUBRICATION:</b>	Positive delivery. Pump, heat exchanger, and necessary temp and pressure controls are furnished.
<b>OPTIONS:</b>	Accelerometers, speed pickup, and other application specific items can be accommodated or supplied.
<b>APPROXIMATE WEIGHT:</b>	850 lbs.
<b>STANDARD FINISH:</b>	2-part polyurethane enamel



SN1678 DRW.