

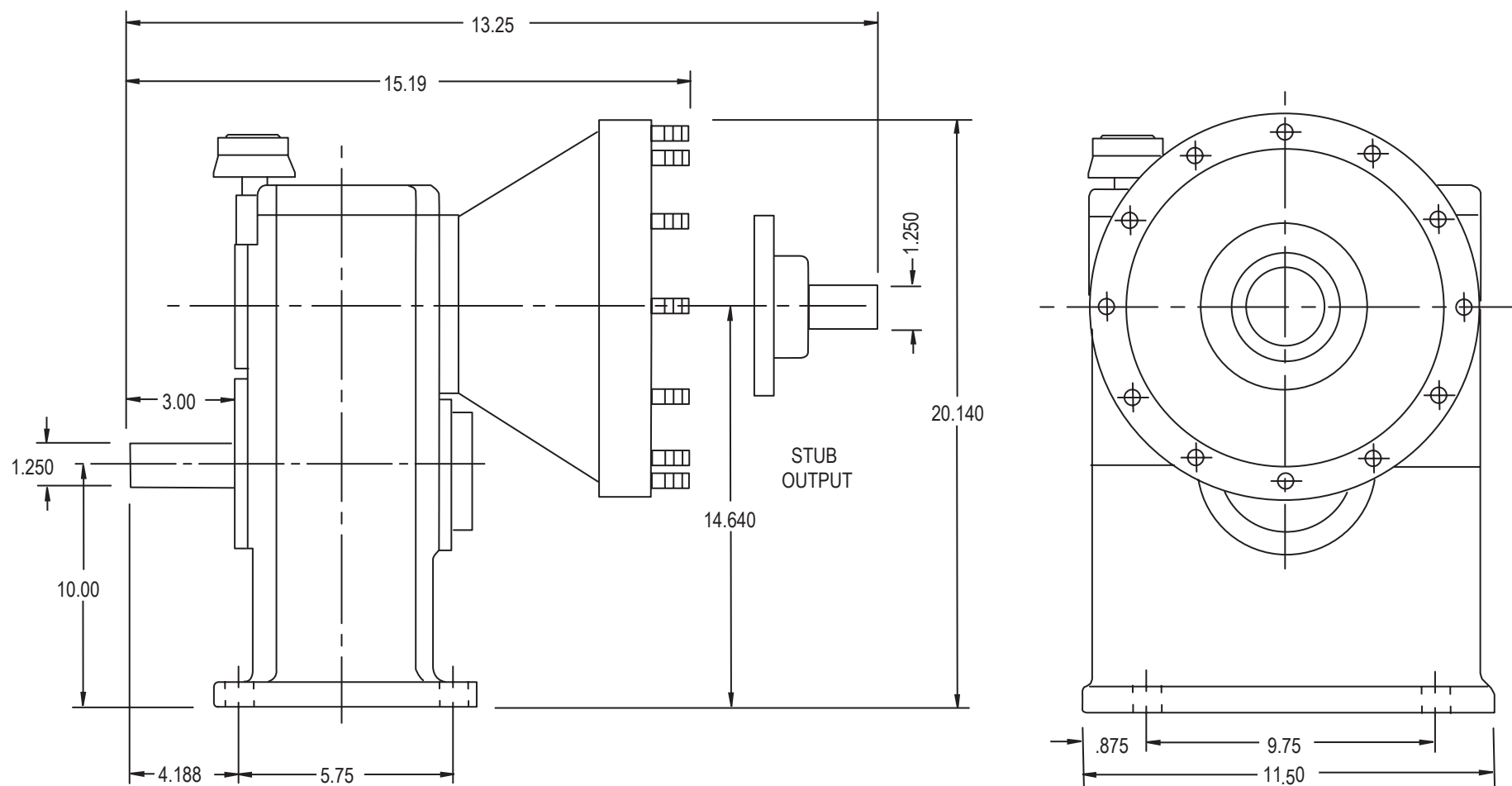
Product Description:

Model SN1649 is a foot mounted, single increasing stage, high-speed gearbox designed for test stand use. The gearbox is compact making it suitable for enclosure into unitized test stands. This model has a stub input shaft and typically has an aerospace accessory drive pad output. The gearbox can be modified for operation up to 50,000 rpm output speed.

POWER:	300 HP
OUTPUT SPEED:	30,000 RPM typical 50,000 RPM with modifications
RATIOS:	2.00, 2.58, 3.00, 4.00, 5.44 Contact Cotta for other available ratios
MAX ACCEL / DECEL RATE:	2000 rpm/sec at output. For higher rates contact Cotta.
INPUT CONFIGURATION:	Keyed stub shaft is standard. Contact Cotta for optional inputs.
OUTPUT CONFIGURATION:	AND20002 pad is typical. Shafts and various other pads available.
ROTATION:	Input can be driven ccw or cw. Output rotates opposite to input.
LUBRICATION:	Positive delivery. Pump, heat exchanger, and necessary temp and pressure controls are furnished.
OPTIONS:	Accelerometers, speed pickup, and other application specific items can be accommodated or supplied.
APPROXIMATE WEIGHT:	200 lbs.
STANDARD FINISH:	2-part polyurethane enamel



This drawing shows general arrangement and approximate space claim. Do not design, scale, or lay out using this drawing. Use only certified drawings provided by Cotta Engineering.



SN1649 DRW.