



MODEL PD440 PUMP DRIVE GEARBOX

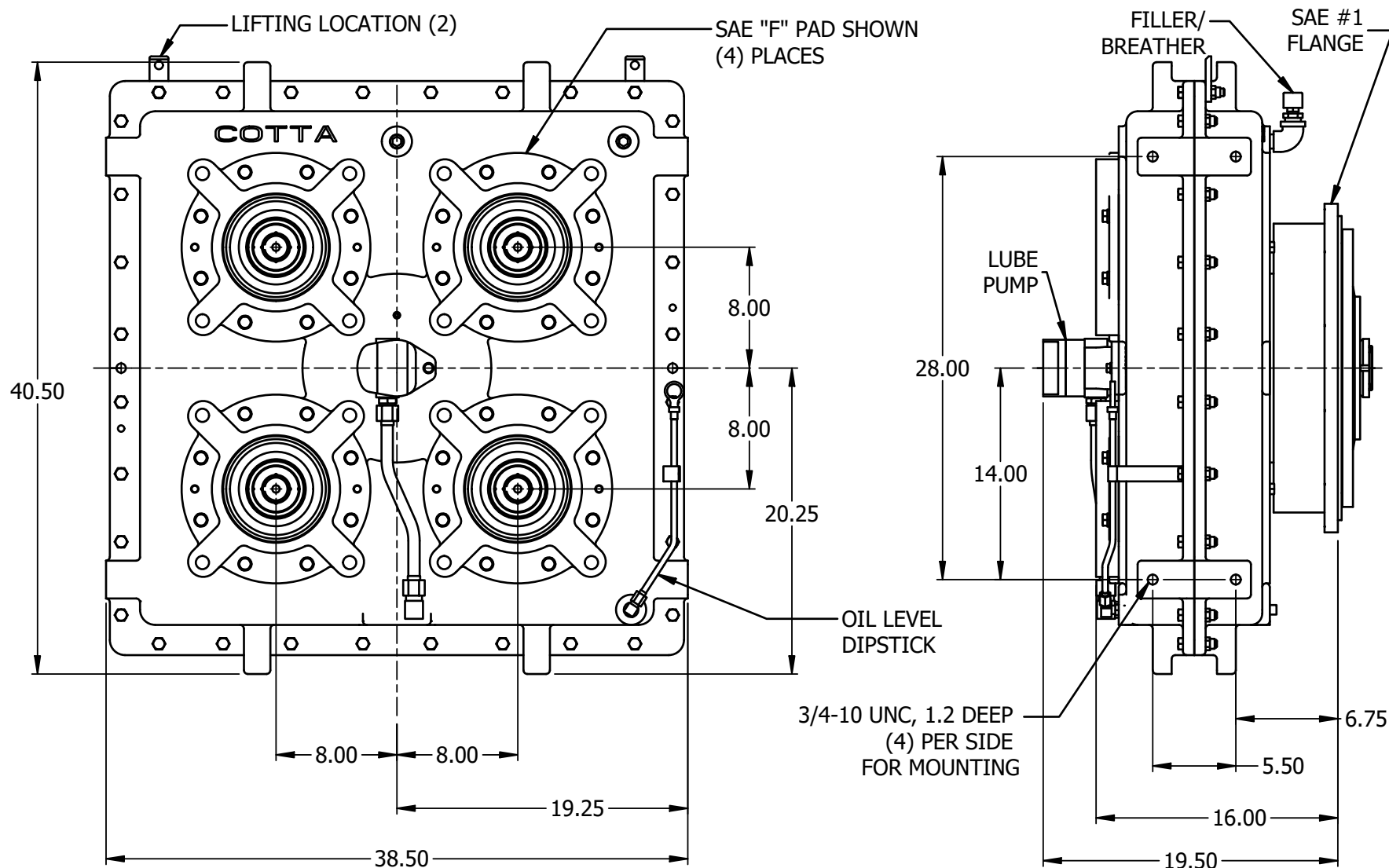
Product Description

Model PD440 is a heavy duty four output pump drive offered in both direct engine mount via SAE flange and independent mount. The output stations are designed to accommodate Cotta pump pad kits in sizes from SAE B to SAE F, as well as various ISO and custom Pad size and location are customer specified and can be moved or interchanged on most units without the necessity to remove or disassemble the gearbox. A special version of this pump drive can host 8 pumps by locating pump pads on both sides of the case. The 8 pump option is only available in independent mount.

POWER:	1500 HP max input 900 HP max per output
MAX INPUT / OUTPUT SPEED:	2200 / 2600 rpm
MAX TORQUE:	Input: 3600 lb-ft Per output station: 2150 lb-ft.
RATIO:	Overspeed: 1.177, 1.11, 1.015
ROTATION:	Outputs rotate opposite to input.
OUTPUT OPTIONS:	Various SAE and ISO pump pads. PTO shafts, disconnects, clutches, custom.
MOUNTING OPTIONS:	SAE flange size #0, #1. Independent.
FLYWHEEL COUPLING OPTIONS:	Overcenter clutches, torsional couplings, drive plates, custom.
LUBRICATION:	Internal reservoir. Lube pump furnished, heat exchanger required.
APPROXIMATE WEIGHT:	2100 lbs.



This drawing shows general arrangement and approximate space claim. Do not scale, design, or lay out using this drawing. Use only certified drawings provided by Cotta Engineering.



PD440 DRW.