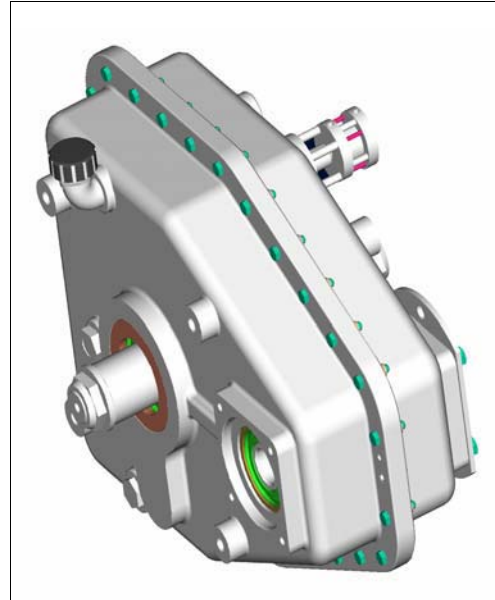


## TR2218 Hydro-motor "creep" drive

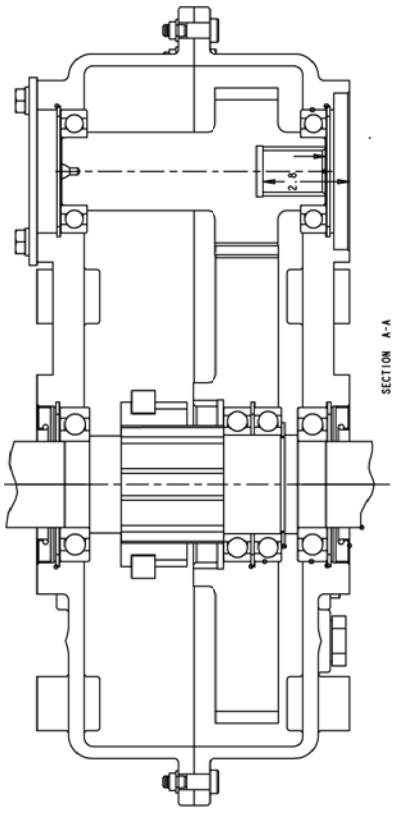
TR2218 is a single reduction auxiliary gearbox designed to provide vehicle inching by use of a hydraulic motor. The gearbox is installed in the driveline between the main transmission and drive axle. In creep operation, the main transmission is placed in neutral and an internal dog clutch engages the hydraulic motor which powers the rear axle through a reduction gear set. This can provide precise vehicle inching as well as fwd/rev control.

When the gearbox is shifted to road mode, the gears disengage and do not rotate thereby preventing HP loss and heat generation from gears churning in the oil, and, back-driving the hydraulic motor is eliminated.

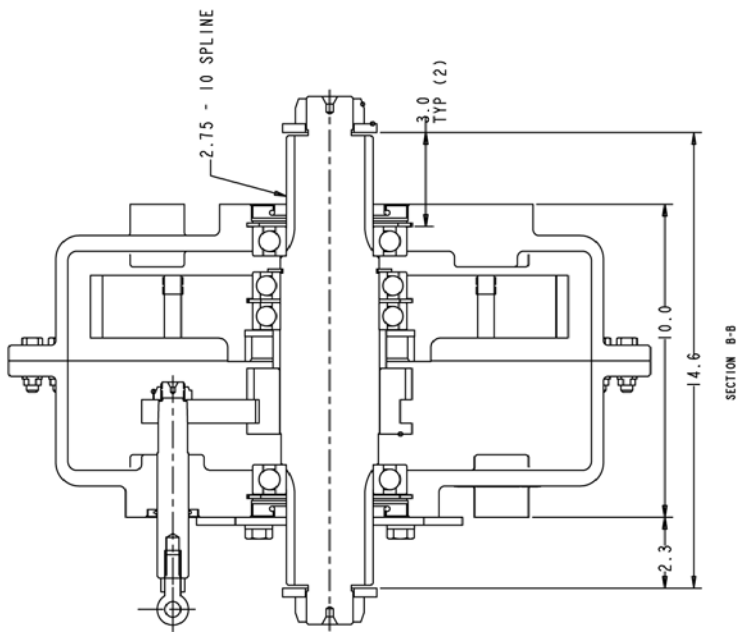


<b>Capacity:</b>	12,500 lb-ft through shaft. 900 lb-ft through gears
<b>Maximum speeds:</b>	Through shaft—3000 RPM Motor Pad—500 RPM
<b>Ratio:</b>	3:1
<b>Shift type:</b>	Air cylinder shifted dog type clutch
<b>Lubrication:</b>	Splash
<b>Motor pads:</b>	SAE C
<b>Weight:</b>	350 lbs. (approx)
<b>Spline size:</b>	2-3/4 X 10 (input and output)

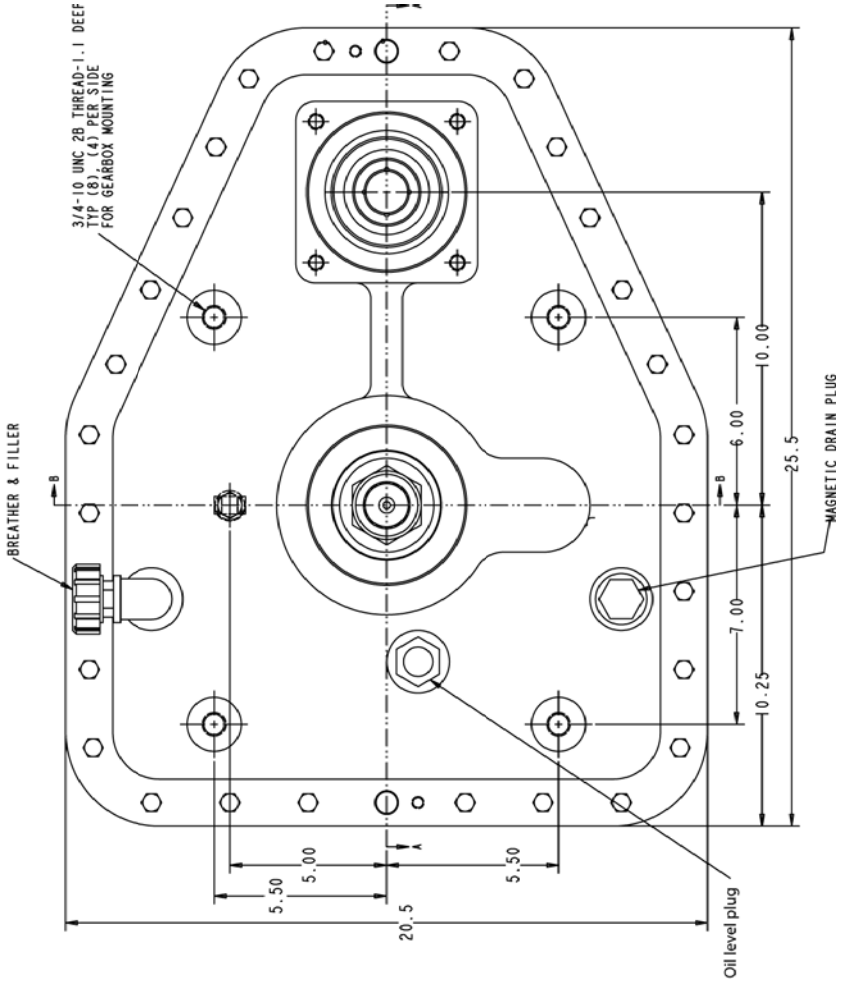
# TR2218 Inching Transmission



SECTION A-A



SECTION B-B



3/4 - 10 UNC 2B THREAD - 1.1 DEEP  
3/8 - 10 PER SIDE  
FOR GEARBOX MOUNTING

BREATHER & FILLER

Oil level plug

MAGNETIC DRAIN PLUG