

**MODEL SR3E
REDUCTION GEAR**

Model SR3E is a heavy duty reduction gear having engine rotation that includes a clutch and mounts to an engine for a compact package with proper alignment. The gears are helical and carburized for ultimate strength and endurance. Gears are designed per AGMA specifications. The bearings are tapered roller and the case is heavy cast iron. A wide variety of ratios are available.

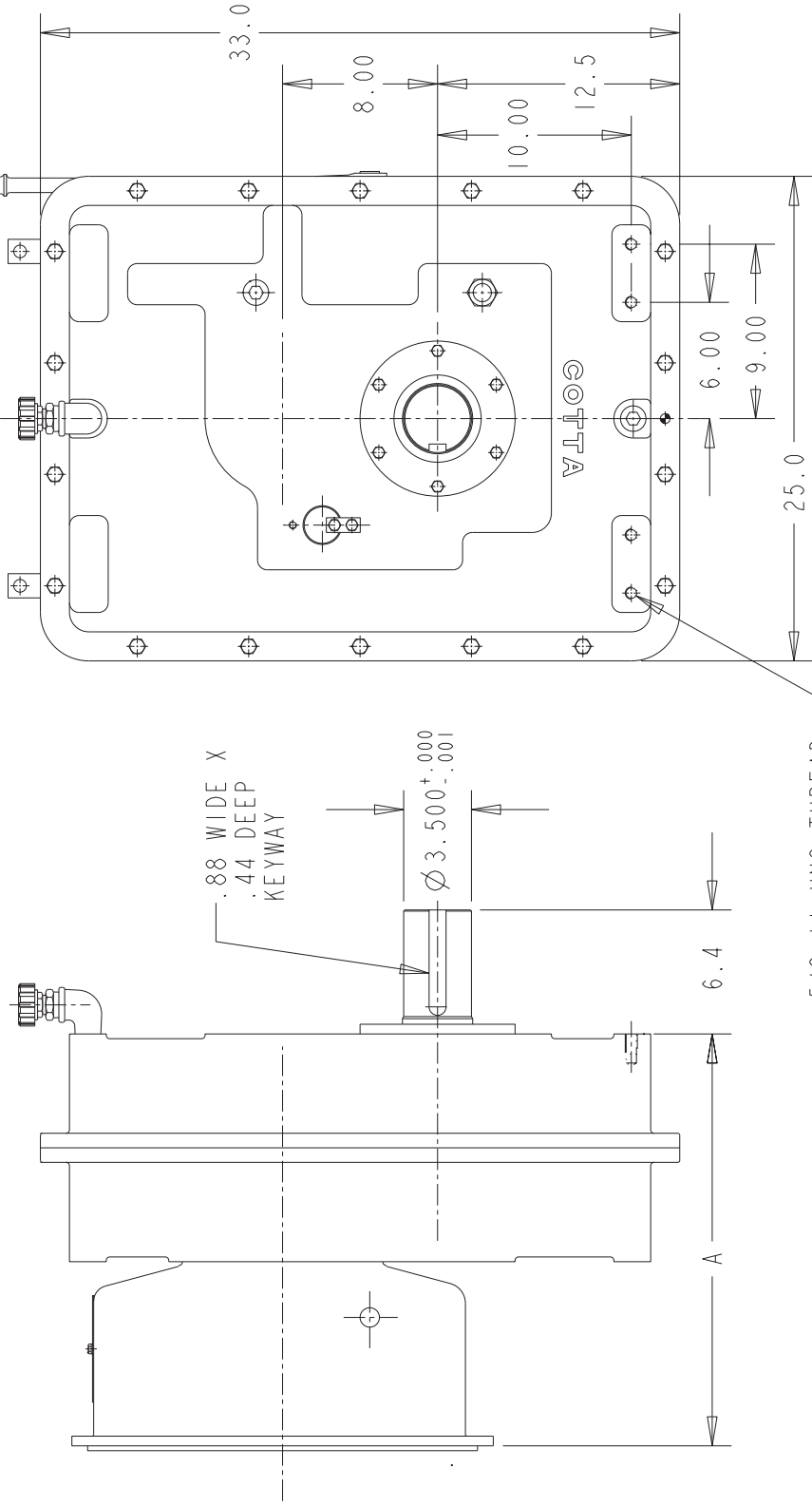
CAPACITY (nominal input torque):	900 lb. ft.
MAXIMUM INPUT SPEED:	3000 RPM
RATIOS:	1.20, 1.38, 1.59, 1.84, 2.03, 2.52, 3.00
BELL HOUSINGS:	SAE #1, #2, #0
CLUTCHES:	SP211, SP114, SP214, SP314, SP218
OUTPUT SHAFT:	3.500" diameter, 5" long 7/8 x 7/16 keyway
REAR SUPPORT:	4 holes 5/8-11 on rear cover for customer's support plate
LUBRICATION:	Splash
WEIGHT:	975 lbs

07/31/03

MODEL SR3E REDUCTION GEAR

OUTPUT CAN BE ORIENTED
AT 3, 6, 9, OR 12 O'CLOCK POSITION
CONTACT COTTA FOR MOUNTING HOLE LOCATION

SAE BELLHSG #	DIM A
#3	19.38
#2	19.38
#1	21.25
#1 (DEEP)	22.75



.88 WIDE X
.44 DEEP
KEYWAY

$\varnothing 3.500^{+.000}_{-.001}$

6.4

A

5/8-11 UNC THREAD
TYP (4)
FOR GEARBOX MOUNTING

DO NOT USE DIMENSIONS ON THIS DRAWING FOR
INSTALLATIONS, USE CERTIFIED PRINT PROVIDED
WITH ORDERS.