

**MODEL SR2031  
REDUCTION GEAR**

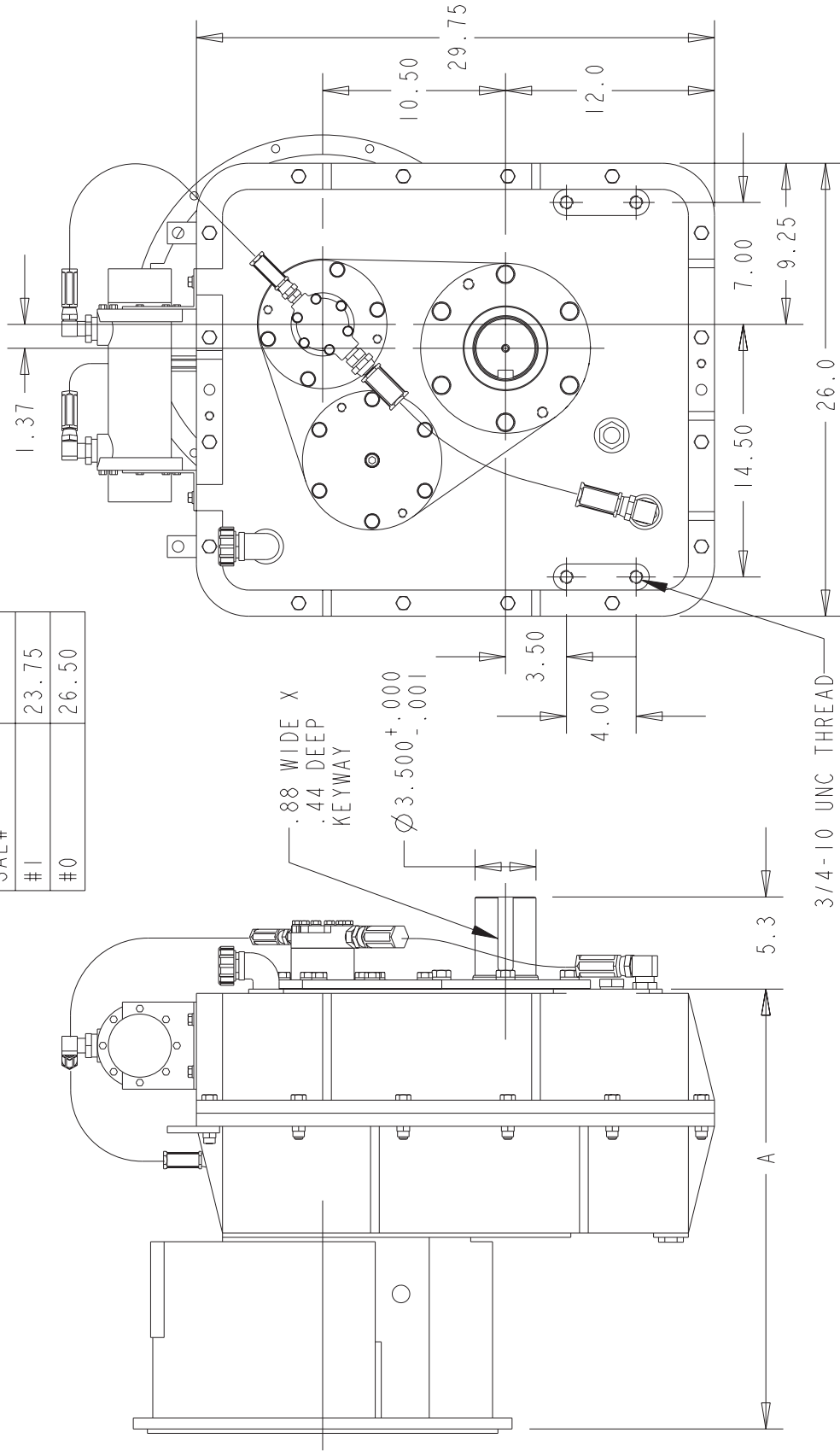
Model SR2031 is a heavy duty reduction gear that unit mounts to an engine for a compact package with proper alignment. It has engine rotation and is available with a variety of ratios. The gears are helical, carburized and designed per AGMA standards for ultimate strength, and endurance. The bearings are tapered roller and the case is stress relieved fabricated steel.

|   |   |
|---|---|
| <b>CAPACITY (nominal input torque):</b> | 1150 lb. ft.  |
| <b>MAXIMUM INPUT SPEED:</b>             | 2500 RPM  |
| <b>RATIOS:</b>                          | 3.50, 4.04, 5.25, 5.94, 7.05  |
| <b>BELL HOUSINGS:</b>                   | SAE #1, #0  |
| <b>CLUTCHES:</b>                        | SP214, SP314, SP218<br>also 14" and 18" rubber block drives<br>and flywheel couplings |
| <b>OUTPUT SHAFT:</b>                    | 3.500" diameter, 4.50" long 7/8 x<br>7/16 keyway                                      |
| <b>REAR SUPPORT:</b>                    | 4 holes 3/4-10 for customer<br>provided rear support                                  |
| <b>LUBRICATION:</b>                     | Lube pump furnished   |
| <b>WEIGHT:</b>                          | 1420 lbs  |

07/31/03

# MODEL SR2031 REDUCTION GEAR

| BELLHSG<br>SAE# | DIM A |
|-----------------|-------|
| #1              | 23.75 |
| #0              | 26.50 |



DO NOT USE DIMENSIONS ON THIS DRAWING FOR INSTALLATIONS, USE CERTIFIED PRINT PROVIDED WITH ORDERS.