

**MODEL SR2030
REDUCTION GEAR**

Model SR2030 is a heavy duty reduction gear available in engine rotation (SR2030E) or anti-engine rotation (SR2030A). A clutch and bell housing is included for mounting to an engine for a compact package with proper alignment. The gears are helical and carburized for ultimate strength and endurance. Gears are designed per AGMA specifications. The bearings are tapered roller and the case is cast iron. A wide variety of ratios are available in either direction of rotation.

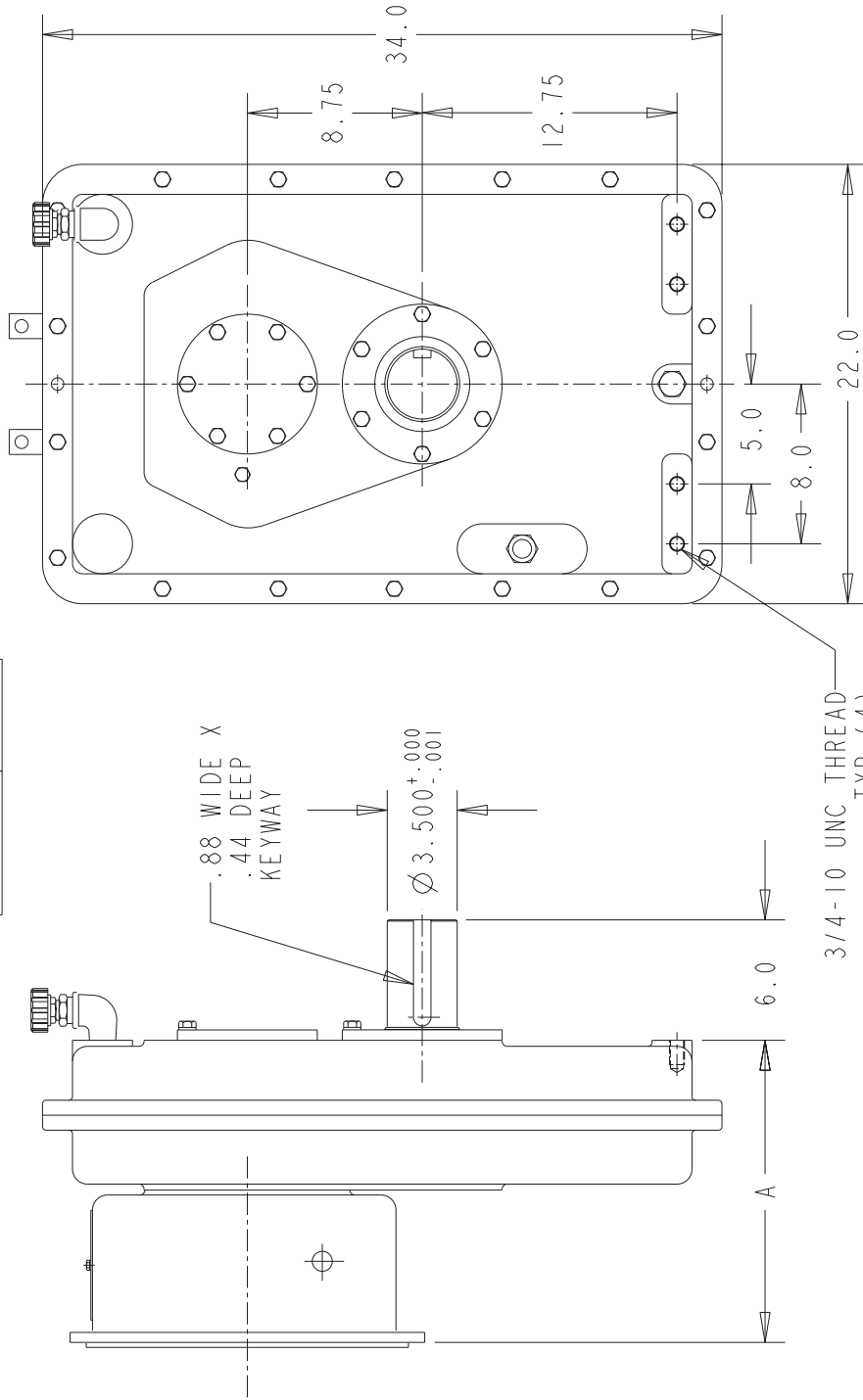
CAPACITY (nominal input torque):	750 lb. ft.
MAXIMUM INPUT SPEED:	2500 RPM
RATIOS: (ENGINE) (ANTI-ENGINE)	3.22, 3.42, 3.89, 4.16, 4.47, 4.81, 5.20 3.45, 3.77, 4.00, 4.25, 4.53, 4.83, 5.17
BELL HOUSINGS:	SAE #1, #2, #3, #0
CLUTCHES:	SP111, SP214, SP314, SP218
OUTPUT SHAFT:	3.500" diameter, 5.5" long 7/8 x 7/16 keyway
REAR SUPPORT:	4 holes 3/4-10 for customer's support plate
LUBRICATION:	Splash
WEIGHT:	900 lbs

07/31/03

MODEL SR2030 REDUCTION GEAR

CONTACT COTTA FOR OTHER
OUTPUT ORIENTATIONS
(3, 9, OR 12 O'CLOCK)

BELLHSG SAE #	DIM A
#2	15.12
#1	17.00
#0	19.75



3/4-10 UNC THREAD
TYP (4)
FOR GEARBOX MOUNTING

DO NOT USE DIMENSIONS ON THIS DRAWING FOR
INSTALLATIONS, USE CERTIFIED PRINT PROVIDED
WITH ORDERS.