

**MODEL SIR2A
SPEED INCREASER**

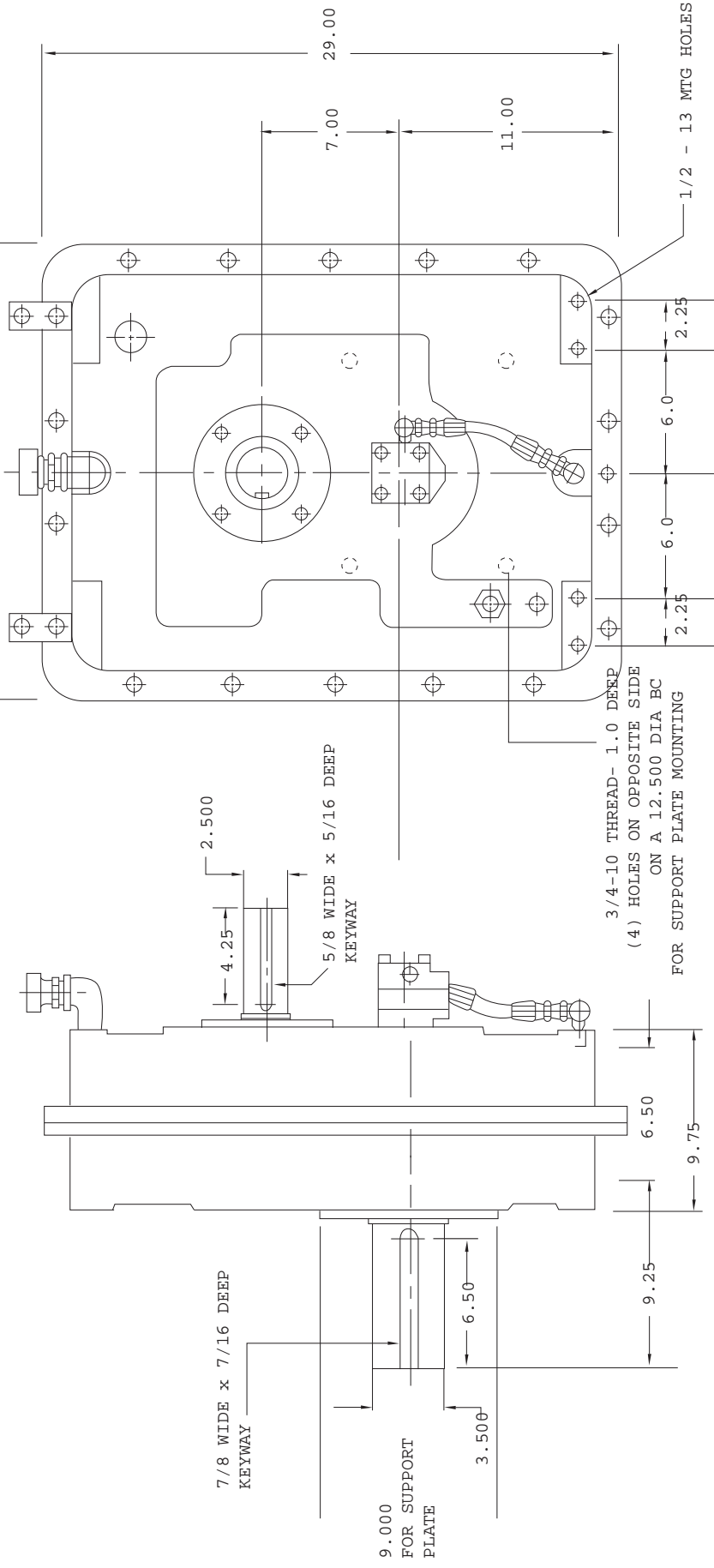
Model SIR2A is an independently mounted speed increaser that is available in a variety of ratios. Model SIR2A has two gears resulting in output rotation opposite input. The gears are helical, carburized, and are precision ground. The bearings are taper roller and the case is cast iron.

CAPACITY (nominal input torque):	1450 lb. ft. (See SI2A capacity curve)
MAXIMUM INPUT SPEED:	3600 RPM
MAXIMUM OUTPUT SPEED:	4800 RPM
RATIOS:	1.20, 1.50, 1.68, 1.75, 1.97, 2.24, 2.55
INPUT SHAFT:	3.500 diameter by 7" long with 7/8 x 7/16 keyway
OUTPUT SHAFT:	2.50" diameter by 5.25" long with 5/8 x 5/16 keyway
CENTER DISTANCE:	7.000"
LUBRICATION:	ISO Viscosity Grade 68, AGMA #2 Lube pump and filter are furnished
COOLING:	A tube type heat exchanger is furnished (shipped loose). If cooling water is not available a radiator can be furnished (contact Cotta for additional information)
MOUNTING:	There is a pilot and 4 drilled and tapped holes on the front of the case for mounting purposes. Mounting bracket is not furnished and is to be fabricated to suit application.
WEIGHT:	725 lbs

07/31/03

MODEL SIR2A SPEED INCREASER

OUTPUT SHAFT SHOWN AT 12 O'CLOCK
(ABOVE THE INPUT SHAFT).
ALSO AVAILABLE WITH OUTPUT SHAFT
LOCATIONS AT 3, 6 OR 9 O'CLOCK
POSITIONS.



DO NOT USE DIMENSIONS ON THIS DRAWING FOR
INSTALLATIONS. USE CERTIFIED PRINT PROVIDED
WITH ORDERS

CUSTOMER TO FURNISH
MOUNTING BRACKETS TO SUIT