

**MODEL SI3A**  
**SPEED INCREASER**

Model SI3A is a heavy duty unit mounted speed increaser having anti-engine rotation. It is available with a variety of input housings and clutches (or rubber block drives or flywheel couplings) to fit the different engines. A wide range of ratios are offered.

The gears are helical, carburized and precision ground and are per AGMA Q-12. The bearings are taper roller throughout. The case is heavy cast iron.

CAPACITY (nominal input torque):	2000 lb. ft.
MAXIMUM INPUT SPEED:	3000 RPM NOTE: with SP218 clutch - 2000 RPM with SP318 clutch - 2350 RPM
MAXIMUM OUTPUT SPEED:	6000 RPM
RATIOS:	1.39, 1.50, 1.66, 2.0, 2.21, 2.44, 3.04
BELL HOUSINGS:	SAE #0, #1
CLUTCHES:	SP314, SP218, SP318 and 14" and 18" rubber block drives
OUTPUT SHAFT:	2.750" diameter with 5/8 x 5/16 keyway
REAR SUPPORT:	4 holes 5/8-11 on rear cover for customers support plate
LUBRICATION:	ISO Viscosity Grade 68 Lube pump and filter furnished
COOLING:	Heat exchanger is furnished (loose)
WEIGHT:	1000 lbs

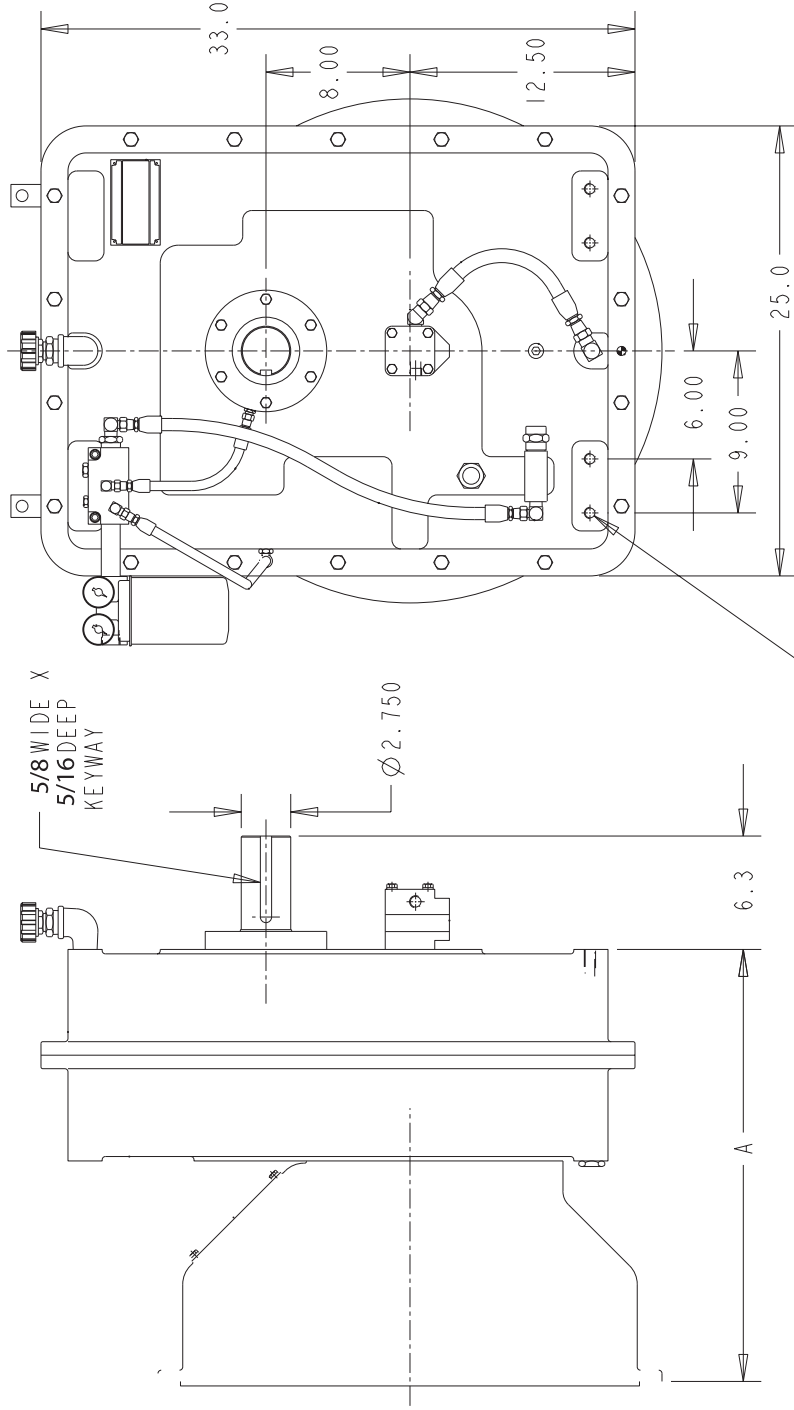
Note: The output shaft can be located at 6 o'clock (below the input shaft) or at the 12 o'clock (above the input shaft) positions.

07/31/03

# MODEL SI3A SPEED INCREASER

BELLHSG SAE #	DIM A
#1	22.75
#0	26.25

OUTPUT CAN BE ORIENTED  
AT 3, 6, 9, OR 12 O'CLOCK POSITION  
CONTACT COTTA FOR MOUNTING HOLE LOCATION



5/8-11 UNC THREAD  
TYP (4)  
FOR GEARBOX MOUNTING

DO NOT USE DIMENSIONS ON THIS DRAWING FOR  
INSTALLATIONS, USE CERTIFIED PRINT PROVIDED  
WITH ORDERS.