

MODEL HS0305
HIGH SPEED

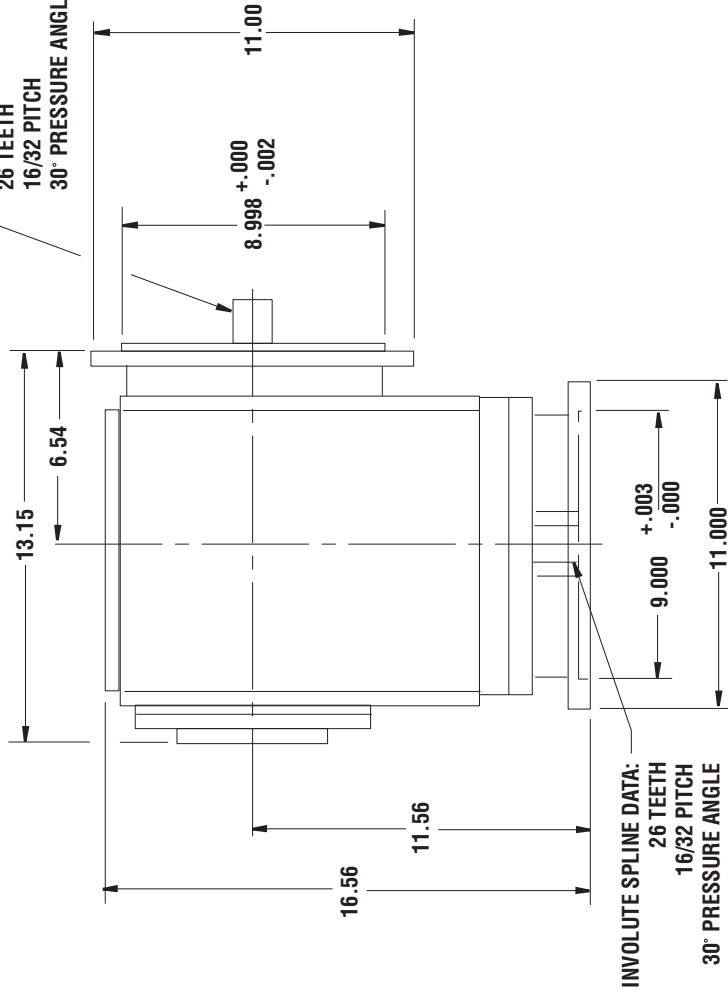
Model HS0305 is a high speed right angle gearbox that is designed to fit an existing test stand for attitude testing. The output pad can be rotated in 7 degree 30 minute increments about the input centerline. It has an overspeed ratio and a high acceleration/deceleration rate. The gears are spiral bevel and are precision ground. The output bearings are tilting pad journal type. The case is stress relieved fabricated steel.

MAXIMUM HORSEPOWER:	300 HP @ 17,500 to 30,000 RPM Constant torque below 17,500 RPM
MAXIMUM OUTPUT SPEED:	30,000 RPM
RATIO:	1.0 to 2.0
ACCEL/DECEL RATE:	7500 RPM/Sec. Max.
INPUT PAD:	AND10267 type XVII with the exception that there are 48 holes in place of 12 holes
OUTPUT PAD:	AND20007 with the exception that there are 48 holes in place of 12 studs
PITCH RANGE:	The gearbox will operate 112.5 degrees above the horizontal to 135 degrees below the horizontal. There are 4 scavage ports for multiple pitch operation.
DIRECTION OF ROTATION:	Bi-rotational
LUBRICATION:	Uses MIL-C-23699 A separate lube system is supplied. Tank is 14.5" x 16.5" x 18.5" in size. The lube system includes a separate motor driven lube pump, filter, modulating water control valve, heat exchanger and oil level gauge. A temperature and pressure switch signals on high lube temperature and low pressure.
WEIGHT:	750 pounds including the lube system.
FINISH:	Two (2) coats gray polyurethane enamel.

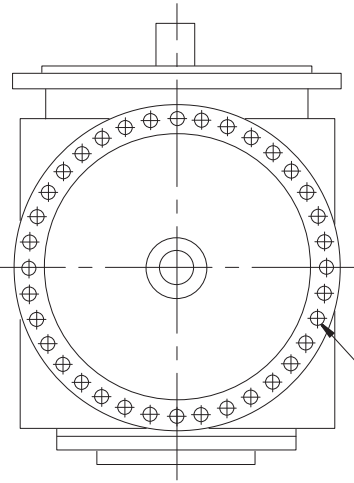
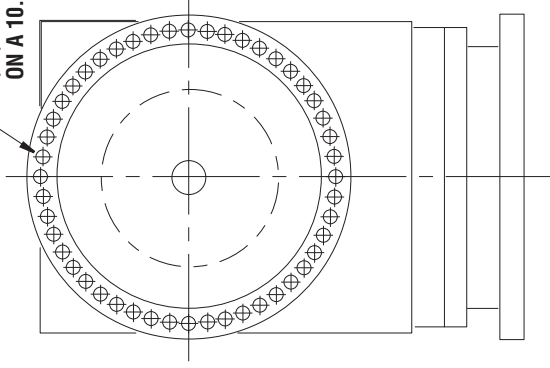
MODEL HS0305

HIGH SPEED

INVOLUTE SPLINE DATA:
26 TEETH
16/32 PITCH
30° PRESSURE ANGLE



.406 DIA. HOLES
(48) HOLES - EQUALLY SPACED
ON A 10.000 DIA. B. C.



.406 DIA. HOLES
(96) HOLES - EQUALLY SPACED
ON A 10.000 DIA. B. C.

DO NOT USE DIMENSIONS ON THIS DRAWING FOR
INSTALLATIONS. USE CERTIFIED PRINT PROVIDED
WITH ORDERS.