

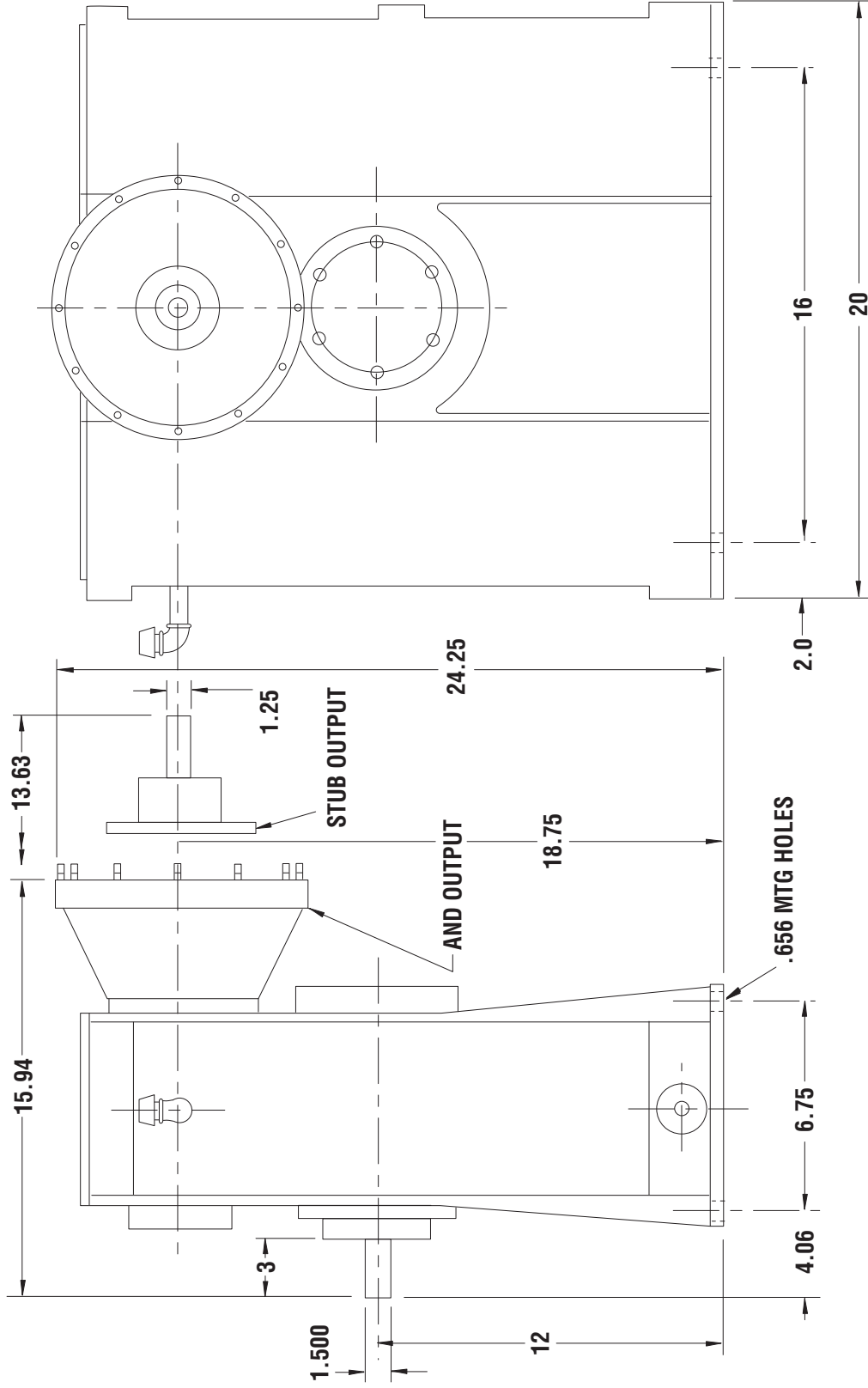
MODEL SN1624
HIGH SPEED

Model SN 1624 is a foot mounted high speed gear box designed for test stand use. This model has a stub input shaft and an output pad. The gears are helical, carburized and precision ground. The bearings are anti-friction. The case is stress relieved fabricated steel.

| | |
|-------------------------------|--|
| MAX. HORSEPOWER: | 300 HP |
| MAX. OUTPUT SPEED: | 50,000 RPM |
| RATIOS: | 5.143, 5.40, 5.957, 7.00 (Contact Cotta for other available ratios) |
| INPUT SHAFT: | 1.500" diameter x 3" long with keyway |
| OUTPUT: | AND20006 Type XVI pad |
| OUTPUT ADAPTERS: | 1 - 16 teeth 20/30P .800 P.D. 1 - 24 teeth 20/30P 1.20 P.D. 1 - 26 teeth 16/32P 1.625 P.D. |
| DIRECTION OF ROTATION: | Bi-rotational - output opposite to input |
| LUBRICATION: | AGMA Grade 1, ISO viscosity grade 46 Separate motor driven lube pump furnishing oil spray on bearings and gear meshes Oil filter and level gauge Separate lube tank assembly is required for output speeds over 30,000 RPM Oil sump is in case |
| COOLING: | Water to oil heat exchanger with modulating water control valve |
| ACCESSORIES: | Temperature/pressure switch to signal high oil temperatures or low pressures |
| OPTIONS: | Stub output shaft, 1.250" diameter with k.w. 60 tooth gear for customers speed pick-up AND20002 output pad AND20007 output pad |
| FINISH: | Two coats gray polyurethane enamel |
| WEIGHT: | 615 lbs |

MODEL SN1624

HIGH SPEED



DO NOT USE DIMENSIONS ON THIS DRAWING FOR INSTALLATIONS. USE CERTIFIED PRINT PROVIDED WITH ORDERS.