

**MODEL GR975-200
REDUCTION GEAR**

Model GR975-200 is a heavy duty reduction gear having engine rotation, includes a clutch and bell housing and mounts to an engine for a compact package with proper alignment. There is a double train of gears that are helical, carburized and precision ground for ultimate strength and endurance. Gears are designed per AGMA specifications. The bearings are anti-friction and the case is cast iron. A wide variety of ratios are available.

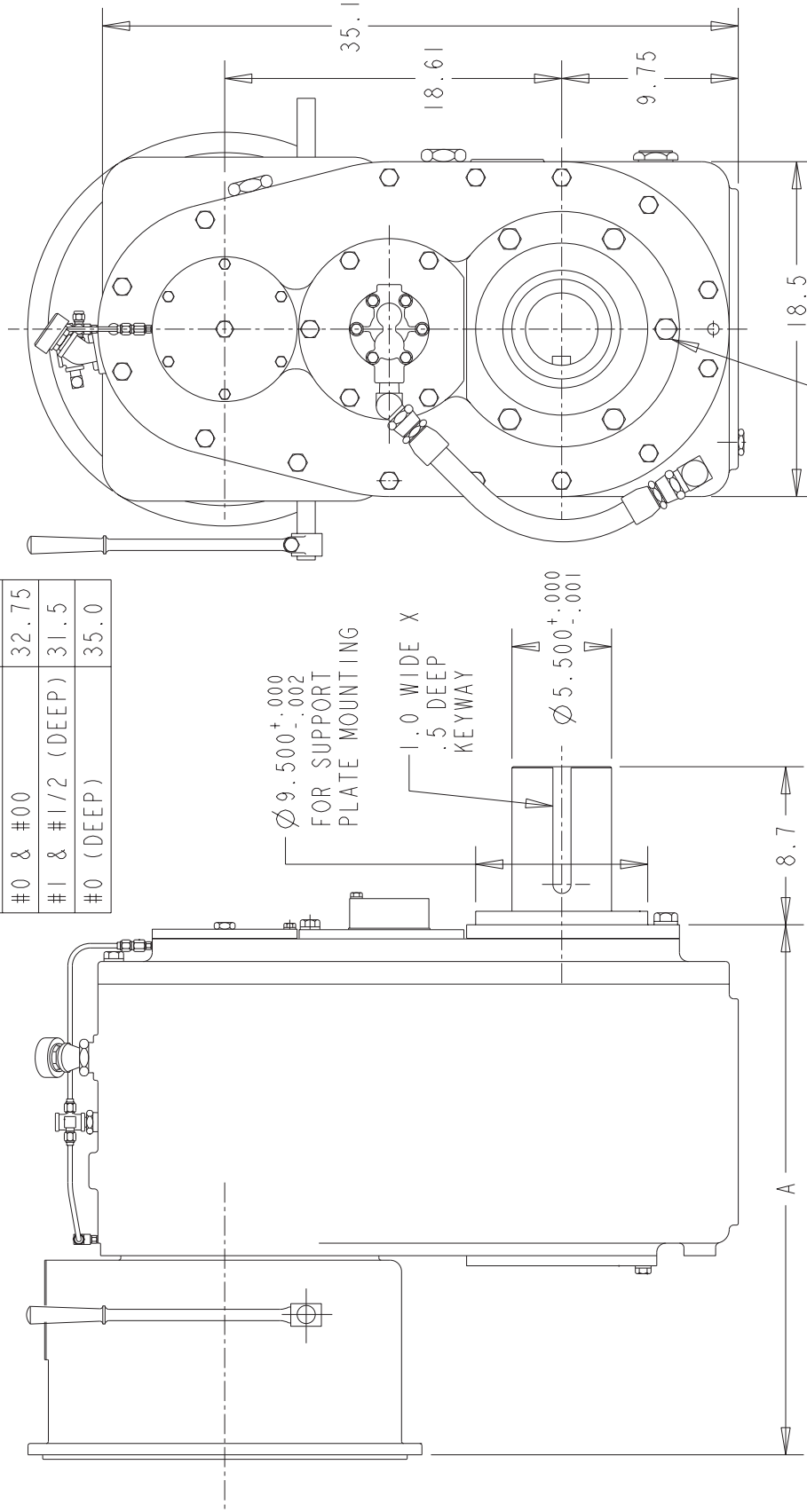
CAPACITY (nominal):	2400 lb. ft.
MAXIMUM INPUT SPEED:	2200 RPM
RATIOS:	3.27, 3.48, 3.69, 4.07, 4.42, 4.92, 6.13, 6.58
BELL HOUSINGS:	SAE #0, #00, #1
CLUTCHES:	SP314, IBF218, SP318, SP321, 18" and 21" Rubber Block Drives and Flywheel Couplings
OUTPUT SHAFT:	5.5" dia. with 1.0 x .5 keyway x 8" long
REAR SUPPORT:	Rear support plate required (not furnished)
LUBRICATION:	Lube pump is furnished, 7 1/2 gallon sump capacity
COOLING:	A heat exchanger is furnished
WEIGHT:	2300 lbs

07/31/03

MODEL GR975-200 REDUCTION GEAR

BELLHSG SAE#	DIM A
#1 & #1/2	30.0
#0 & #00	32.75
#1 & #1/2 (DEEP)	31.5
#0 (DEEP)	35.0

CONTACT COTTA FOR OTHER
OUTPUT ORIENTATIONS
(3, 9, OR 12 O'CLOCK)



DO NOT USE DIMENSIONS ON THIS DRAWING FOR
INSTALLATIONS, USE CERTIFIED PRINT PROVIDED
WITH ORDERS.