

**MODEL GR3200A
REDUCTION GEAR**

Model GR3200A is a heavy duty reduction gear having anti-engine rotation that includes a clutch and mounts to an engine for a compact package with proper alignment. The gears are helical and carburized for ultimate strength and endurance. Gears are designed per AGMA specifications and are precision ground. The bearings are taper roller and the case is cast iron. A wide variety of ratios are available.

CAPACITY (nominal input torque):	5500 lb. ft.
MAXIMUM INPUT SPEED:	2200 RPM
RATIOS:	1.19, 1.50, 1.80, 1.92, 2.04, 2.18, 2.50, 2.89
BELL HOUSINGS:	SAE #0, #00
CLUTCHES:	SP318, IBF318, SP321, IBF321 21" rubber block drives and flywheel couplings
OUTPUT SHAFT:	4.750" diameter with 1.25 x .4375 keyway
REAR SUPPORT:	Rear mounting support feet
LUBRICATION:	Lube pump is furnished
COOLING:	A heat exchanger is furnished
WEIGHT:	1800 lbs

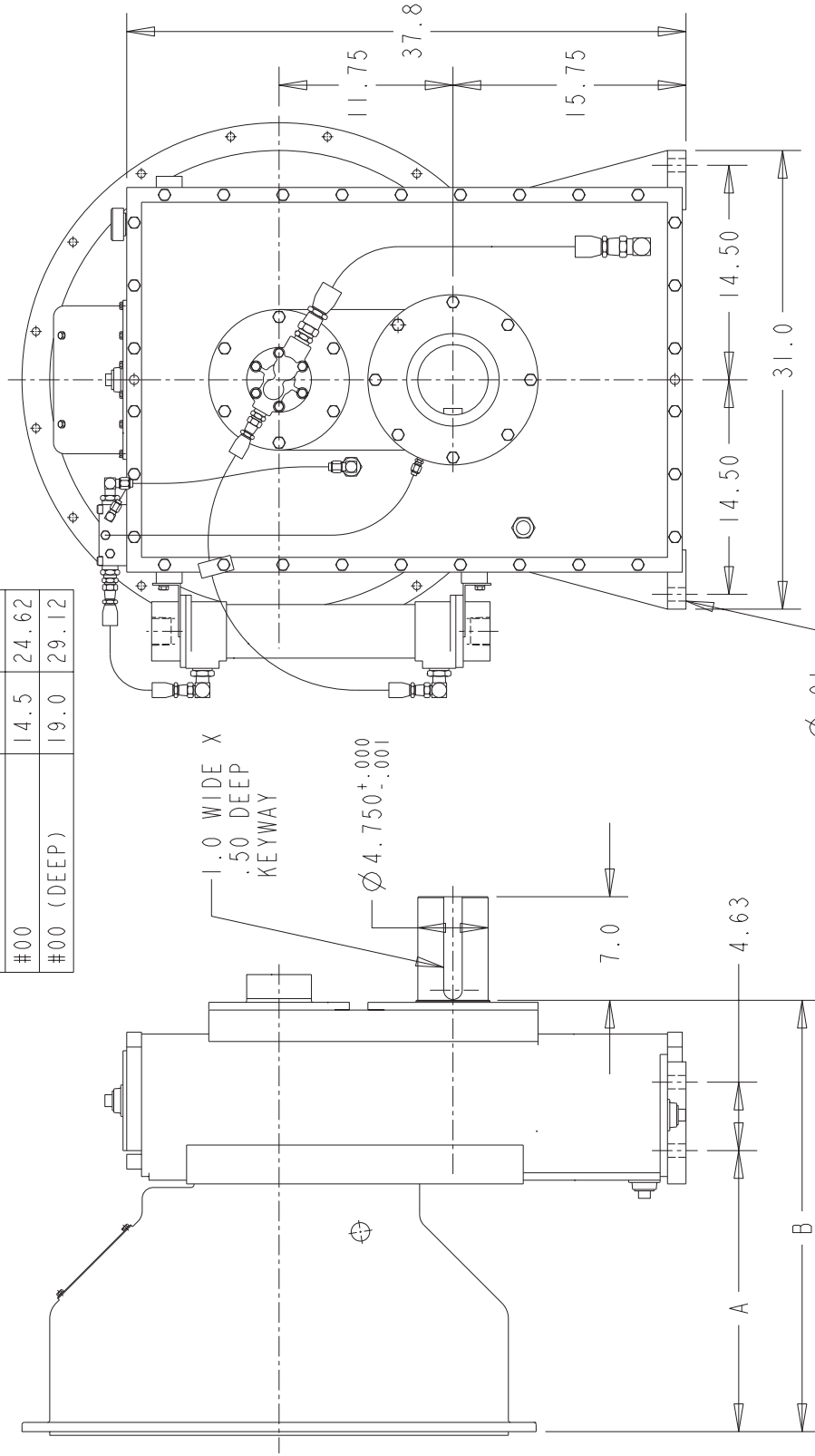
Note—For ratios 3.05, 3.29 and 3.56 see Model GR3210A

07/31/03

MODEL GR3200A REDUCTION GEAR

BELLHSG SAE #	DIM A	DIM B
#0	14.5	24.63
#0 (DEEP)	16.75	26.88
#0 (EXTRA DEEP)	19.0	29.12
#00	14.5	24.62
#00 (DEEP)	19.0	29.12

CONTACT COTTA FOR OTHER
OUTPUT ORIENTATIONS
(3, 9, OR 12 O'CLOCK)



FOR GEARBOX MOUNTING
DO NOT USE DIMENSIONS ON THIS DRAWING FOR
INSTALLATIONS, USE CERTIFIED PRINT PROVIDED
WITH ORDERS.