

MODEL AOR2053A
SPEED INCREASER

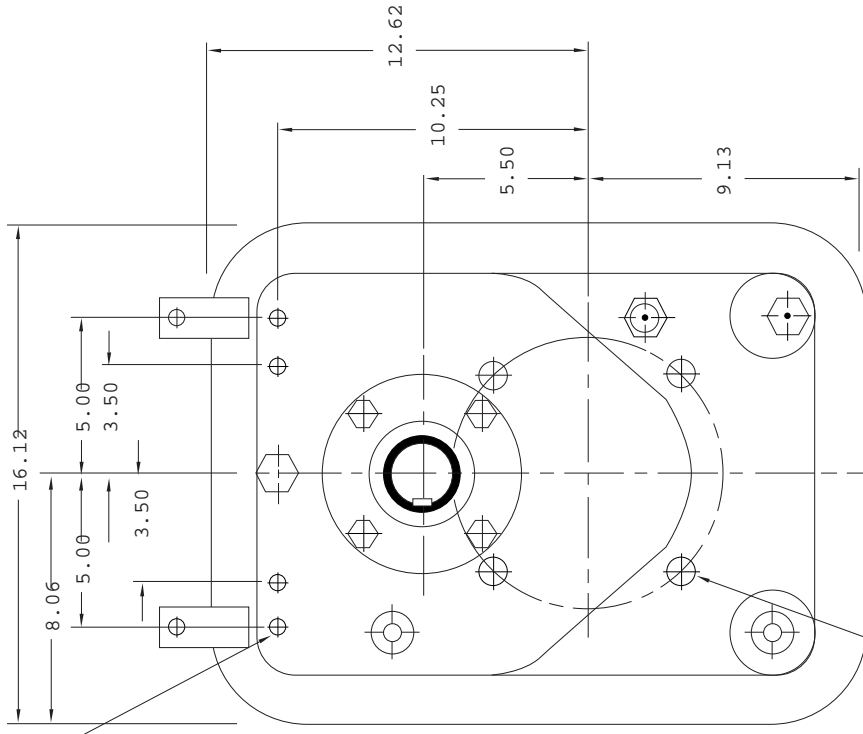
Model AOR2053A is an independently mounted speed increaser. The gears are helical and are carburized to RC58 minimum. The bearings are tapered roller and the case is cast iron.

CAPACITY:	650 lb. ft. (nominal input torque) (See AO2053A capacity curve)
MAXIMUM INPUT SPEED:	3600 RPM
MAXIMUM OUTPUT SPEED:	5000 RPM
DIRECTION OF ROTATION:	Output rotation is opposite to input rotation
RATIOS:	1.20, 1.40, 1.55, 1.80, 2.0, 2.50, 3.00
INPUT SHAFT:	2.25" dia. x 5" long with 5/8 x 5/16 keyway
OUTPUT SHAFT:	2.25" dia. x 5" long with 5/8 x 5/16 keyway
CENTER DISTANCE:	5.500"
LUBRICATION:	Splash ISO Grade 46, AGMA #1
MOUNTING:	There is a 6.999" dia. pilot and 4 holes 3/4-10 on a 9.000" B.C. on the front of the case for mounting purposes. There are also 4 holes 1/2-13 on the case rear cover that can also be used if required.
WEIGHT:	350 lbs

07/31/03

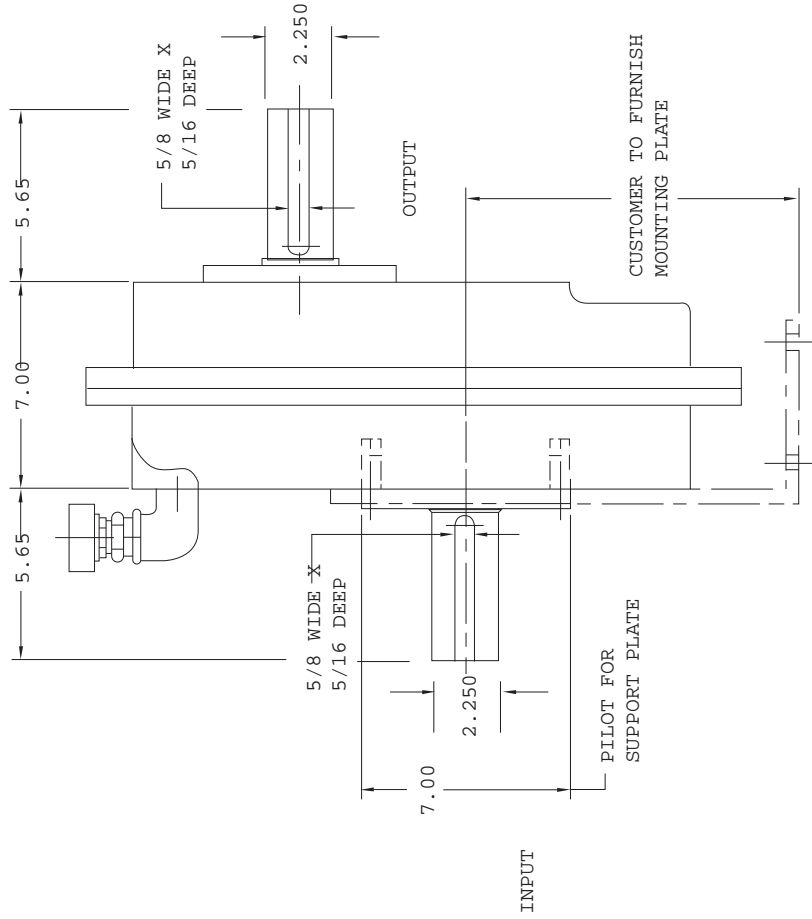
MODEL AOR2053A SPEED INCREASER

1/2-13 THREAD-0.88 DEEP
(4) MOUNTING HOLES



3/4-10 THREAD- 1.0 DEEP
(4) HOLES ON OPPOSITE SIDE
ON A 9.00 DIA BC
FOR SUPPORT PLATE MOUNTING

CUSTOMER TO FURNISH
MOUNTING BRACKETS TO SUIT



DO NOT USE DIMENSIONS ON THIS DRAWING FOR
INSTALLATIONS. USE CERTIFIED PRINT PROVIDED
WITH ORDERS.